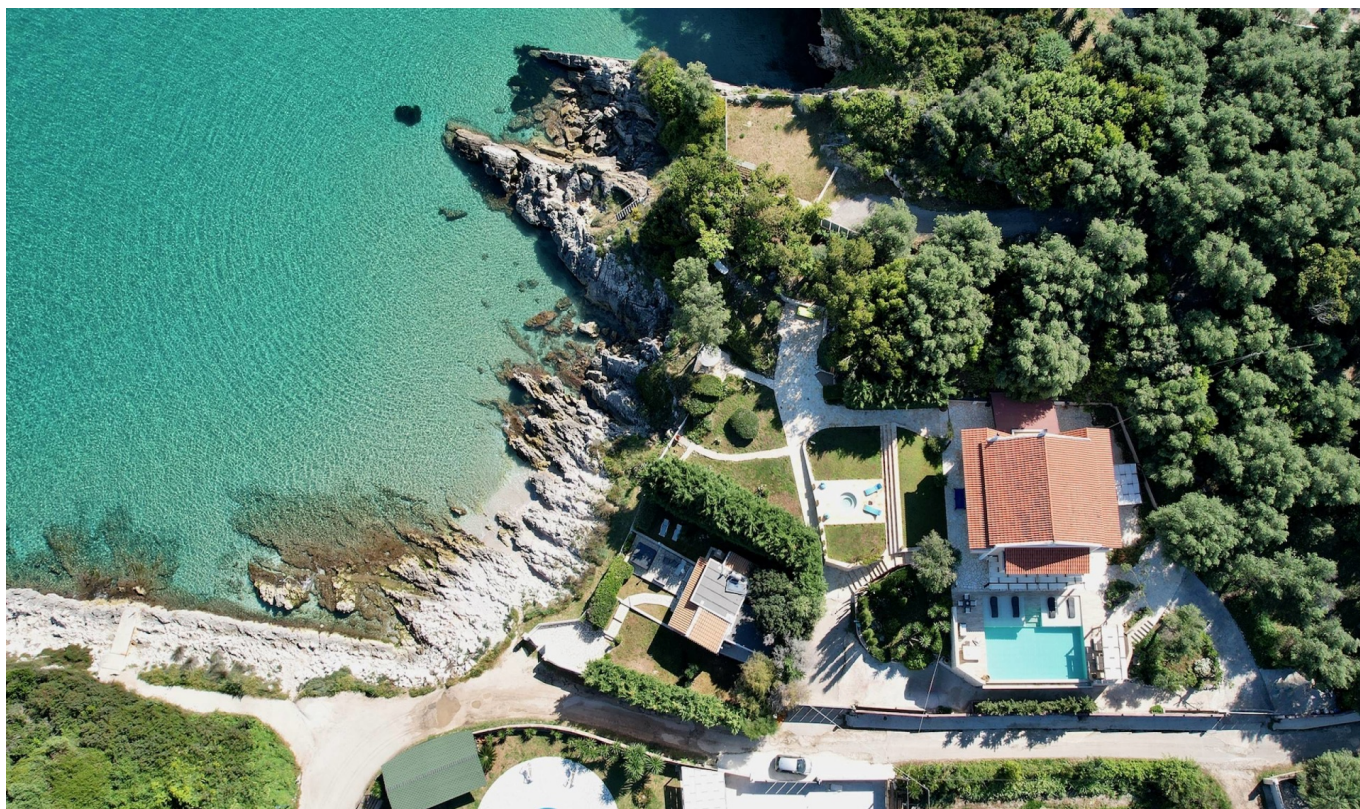


Corfu

Sylvan

Codice oggetto: 2359829



PREZZO D'ACQUISTO: 3.000.000 EUR • SUPERFICIE NETTA: ca. 200 m² • VANI: 5 • SUPERFICIE DEL TERRENO: 4.061 m²

Codice oggetto: 2359829 - 491 00 Corfu

- **A colpo d'occhio**
- **La proprietà**
- **Una prima impressione**
- **Partner di contatto**

Codice oggetto: 2359829 - 491 00 Corfu

A colpo d'occhio

| | | | |
|----------------------------|------------------------------|--------------------------|----------------------|
| Codice oggetto | 2359829 | Prezzo d'acquisto | 3.000.000 EUR |
| Superficie netta | ca. 200 m² | | |
| Vani | 5 | | |
| Camere da letto | 5 | | |
| Bagni | 6 | | |
| Anno di costruzione | 2020 | | |

Codice oggetto: 2359829 - 491 00 Corfu

La proprietà



Codice oggetto: 2359829 - 491 00 Corfu

La proprietà



Codice oggetto: 2359829 - 491 00 Corfu

La proprietà



Codice oggetto: 2359829 - 491 00 Corfu

La proprietà



Codice oggetto: 2359829 - 491 00 Corfu

La proprietà



Codice oggetto: 2359829 - 491 00 Corfu

La proprietà



Codice oggetto: 2359829 - 491 00 Corfu

La proprietà



Codice oggetto: 2359829 - 491 00 Corfu

La proprietà



Codice oggetto: 2359829 - 491 00 Corfu

La proprietà



Codice oggetto: 2359829 - 491 00 Corfu

La proprietà



Codice oggetto: 2359829 - 491 00 Corfu

La proprietà



Codice oggetto: 2359829 - 491 00 Corfu

La proprietà



Codice oggetto: 2359829 - 491 00 Corfu

La proprietà



Codice oggetto: 2359829 - 491 00 Corfu

La proprietà



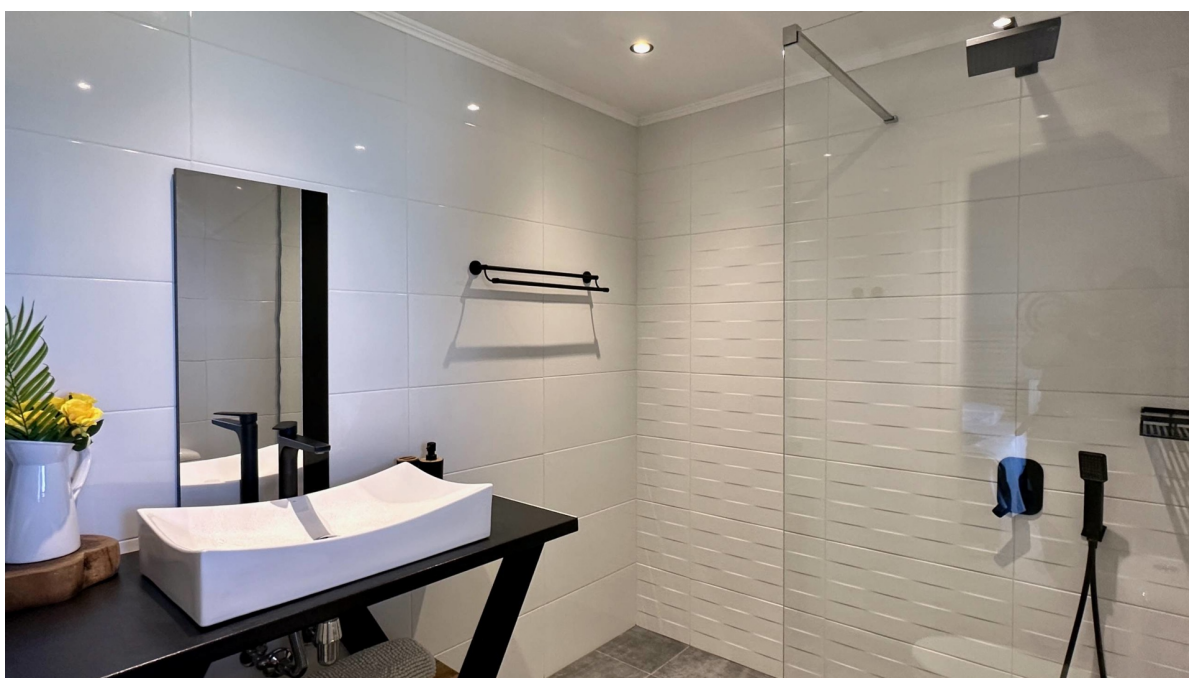
Codice oggetto: 2359829 - 491 00 Corfu

La proprietà



Codice oggetto: 2359829 - 491 00 Corfu

La proprietà



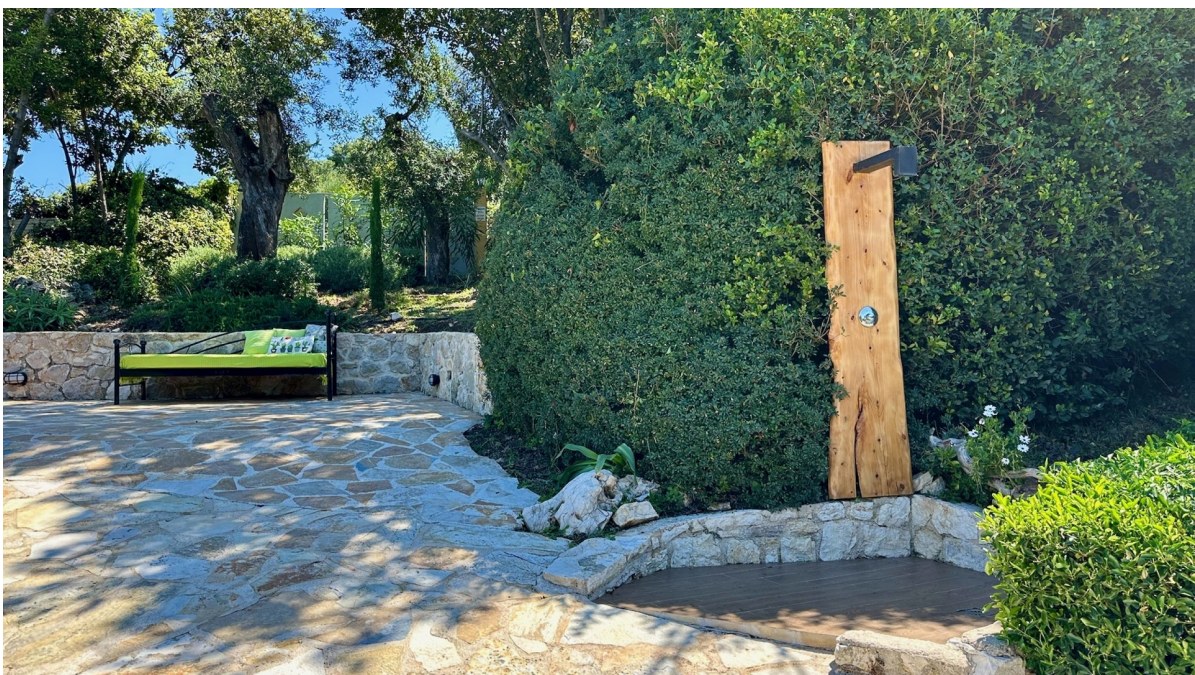
Codice oggetto: 2359829 - 491 00 Corfu

La proprietà



Codice oggetto: 2359829 - 491 00 Corfu

La proprietà



Codice oggetto: 2359829 - 491 00 Corfu

La proprietà



Codice oggetto: 2359829 - 491 00 Corfu

Una prima impressione

Just open the garden gate, walk across the soft sand, and dive straight into the sea, this is the effortless beauty of life at Villa Sylvan, an exceptional seafront retreat set along the unspoiled coastline of Agios Spyridon Beach in northeast Corfu.

Discreetly positioned within over 4,000 sqm of landscaped grounds, the villa offers a rare sense of privacy while enjoying uninterrupted panoramic views across the Ionian Sea. Its setting is both serene and convenient, just a gentle stroll from sandy shores and welcoming seaside tavernas, where long lunches blend into golden evenings.

Designed across two levels with comfort and elegance in mind, the villa invites you into a light-filled open-plan living and dining space, where wide glass doors dissolve the boundaries between indoors and out. The interiors flow seamlessly onto a spacious covered terrace and the sea-facing infinity pool, creating a natural rhythm of living that follows the sun.

The fully equipped kitchen connects effortlessly to a shaded pergola dining area and BBQ space, perfect for relaxed alfresco meals with family and friends. On the ground level, a peaceful en-suite bedroom opens to the garden, offering both privacy and easy access to outdoor living.

Upstairs, the villa unfolds into two distinct wings, enhancing privacy for guests. Each bedroom enjoys its own covered balcony, framing tranquil views over the gardens, pool, and endless blue horizon, with direct access down to the lawns, inviting a sense of freedom and connection to the landscape.

Outdoors, the experience becomes truly captivating. A large heated infinity pool sits at the heart of the garden, surrounded by sun-drenched terraces and shaded lounging areas designed for slow, indulgent days. A pergola-covered dining space, built-in BBQ, and playful touches like a table tennis area complete a setting made for both relaxation and joyful gatherings.

The gardens, gently landscaped with open lawns and soft planting, are designed to maximise the sea views while leading you naturally toward the beach, where the Ionian is always just a few steps away.

Fully equipped with modern comforts and approached through a private gated entrance with ample parking, Villa Sylvan offers a seamless blend of understated luxury, privacy, and true beachfront living.

This is more than a villa, it's a place where every day begins and ends with the sea, a rare opportunity to claim your own piece of Corfu's most enchanting coastline.

Tucked away in the unspoiled enclave of Pelekito, near Agios Spyridon Beach on the northeast coast of Corfu, the area is defined by its raw natural beauty, where sandy coves, protected lagoons, and lush greenery create a peaceful, almost untouched landscape. Life here is gentle and authentic, centered around the sea, nature, and simple pleasures, morning swims, quiet walks, and relaxed seaside dining, offering a rare sense of calm and understated

coastal living.

Von Poll Greece provides full support throughout the property purchase process. Beyond real estate expertise, we work with a trusted network of legal advisors, notaries, tax consultants, and architects, guiding buyers step-by-step from initial search to final handover, ensuring a smooth and secure experience.

Codice oggetto: 2359829 - 491 00 Corfu

Partner di contatto

Per ulteriori informazioni, si prega di contattare la persona di riferimento:

VON POLL REAL ESTATE Athens

Patriarchou Ioakim 19, 10675 Athina

Tel.: +30 21 06 14 87 77

E-Mail: salesgreece@von-poll.com

Alla clausola di esclusione di responsabilità di von Poll Immobilien GmbH

www.von-poll.com