

Glyfada
Coroné

Codice oggetto: 2061143



PREZZO D'ACQUISTO: 1.050.000 EUR • SUPERFICIE NETTA: ca. 134,7 m² • VANI: 3

Codice oggetto: 2061143 - 165 61 Glyfada

- **A colpo d'occhio**
- **La proprietà**
- **Una prima impressione**
- **Partner di contatto**

Codice oggetto: 2061143 - 165 61 Glyfada

A colpo d'occhio

Codice oggetto	2061143	Prezzo d'acquisto	1.050.000 EUR
Superficie netta	ca. 134,7 m²		
Vani	3		
Bagni	3		

Codice oggetto: 2061143 - 165 61 Glyfada

La proprietà



Codice oggetto: 2061143 - 165 61 Glyfada

La proprietà



Codice oggetto: 2061143 - 165 61 Glyfada

La proprietà



Codice oggetto: 2061143 - 165 61 Glyfada

La proprietà



Codice oggetto: 2061143 - 165 61 Glyfada

La proprietà



Codice oggetto: 2061143 - 165 61 Glyfada

La proprietà



Codice oggetto: 2061143 - 165 61 Glyfada

La proprietà



Codice oggetto: 2061143 - 165 61 Glyfada

La proprietà



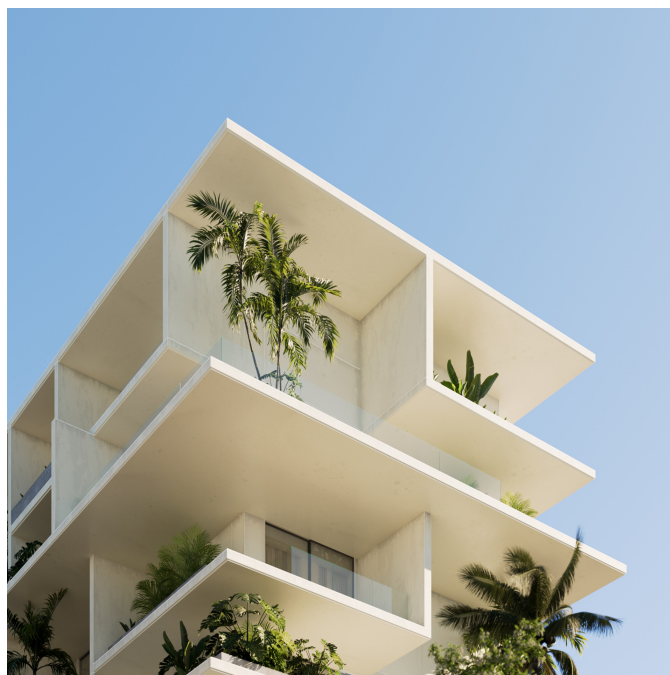
Codice oggetto: 2061143 - 165 61 Glyfada

La proprietà



Codice oggetto: 2061143 - 165 61 Glyfada

La proprietà



Codice oggetto: 2061143 - 165 61 Glyfada

Una prima impressione

Experience the perfect blend of coastal serenity and refined living. Coroné is a stunning two-level penthouse where your private pool meets breathtaking panoramic views.

Covering approximately 134 square meters, this exceptional residence features three bedrooms and three bathrooms, offering generous space and luxurious comfort. Coroné boasts a private swimming pool, expansive terraces, and unobstructed views of both the sea and the surrounding mountains. Designed with sophistication in mind, the penthouse includes an A+ energy-efficient rating, concealed VRF air conditioning, and thermal-break aluminum frame systems. The minimalist design emphasizes open-plan living, natural light, and the opportunity for personalized customization. Every detail has been crafted to create a serene yet elegant sanctuary, ideal for relaxation and entertaining alike.

Located in the prestigious area of Ano-Glyfada along the Athenian Riviera, Coroné combines tranquility with convenience. Residents enjoy proximity to boutique shops, fine dining, excellent schools, and healthcare facilities, while being only minutes from the beach, Glyfada Centre, and central Athens. Its elevated position ensures privacy while offering one of the most spectacular vantage points in the area.

Von Poll Greece supports clients throughout every step of the property purchase process. With a trusted network of legal advisors, notaries, tax consultants, and architects, we ensure that every stage—from initial search and due diligence to contract signing and handover—is seamless, transparent, and secure.

Codice oggetto: 2061143 - 165 61 Glyfada

Partner di contatto

Per ulteriori informazioni, si prega di contattare la persona di riferimento:

VON POLL REAL ESTATE Athens

Patriarchou Ioakim 19, 10675 Athina

Tel.: +30 21 06 14 87 77

E-Mail: salesgreece@von-poll.com

Alla clausola di esclusione di responsabilità di von Poll Immobilien GmbH

www.von-poll.com