

Kifissia

# Elite Oasis

*Codice oggetto: 1575373*



**PREZZO D'ACQUISTO: 5.000.000 EUR • SUPERFICIE NETTA: ca. 540 m<sup>2</sup> • VANI: 4**

**Codice oggetto: 1575373 - 145 64 Kifissia**

- **A colpo d'occhio**
- **La proprietà**
- **Una prima impressione**
- **Partner di contatto**

**Codice oggetto: 1575373 - 145 64 Kifissia**

## **A colpo d'occhio**

<b>Codice oggetto</b>	<b>1575373</b>	<b>Prezzo d'acquisto</b>	<b>5.000.000 EUR</b>
<b>Superficie netta</b>	<b>ca. 540 m<sup>2</sup></b>		
<b>Vani</b>	<b>4</b>		
<b>Camere da letto</b>	<b>4</b>		
<b>Bagni</b>	<b>4</b>		
<b>Anno di costruzione</b>	<b>2019</b>		

Codice oggetto: 1575373 - 145 64 Kifissia

## La proprietà



Codice oggetto: 1575373 - 145 64 Kifissia

## La proprietà



Codice oggetto: 1575373 - 145 64 Kifissia

## La proprietà



Codice oggetto: 1575373 - 145 64 Kifissia

## La proprietà



Codice oggetto: 1575373 - 145 64 Kifissia

## La proprietà



Codice oggetto: 1575373 - 145 64 Kifissia

## La proprietà



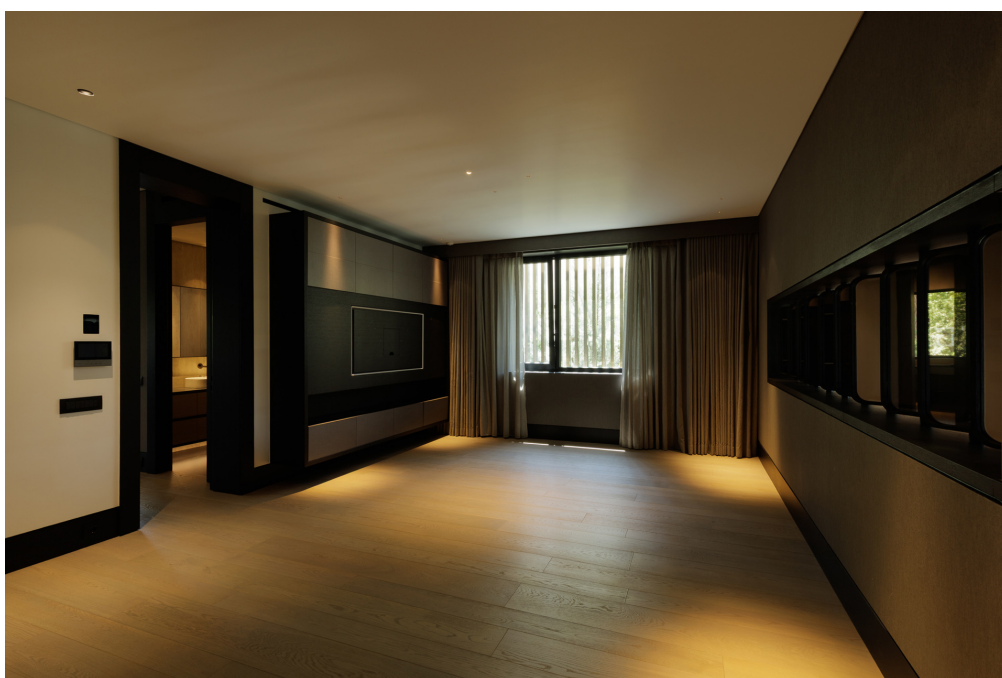
Codice oggetto: 1575373 - 145 64 Kifissia

## La proprietà



Codice oggetto: 1575373 - 145 64 Kifissia

## La proprietà



Codice oggetto: 1575373 - 145 64 Kifissia

## La proprietà



Codice oggetto: 1575373 - 145 64 Kifissia

## La proprietà



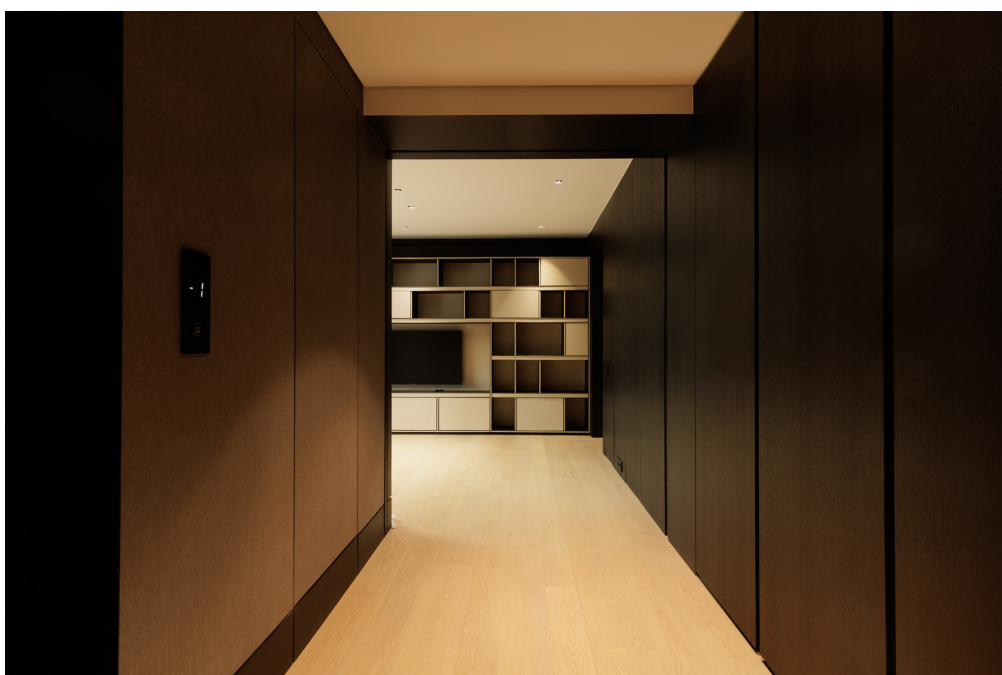
Codice oggetto: 1575373 - 145 64 Kifissia

## La proprietà



Codice oggetto: 1575373 - 145 64 Kifissia

## La proprietà



Codice oggetto: 1575373 - 145 64 Kifissia

## La proprietà



Codice oggetto: 1575373 - 145 64 Kifissia

## La proprietà



**Codice oggetto: 1575373 - 145 64 Kifissia**

## **La proprietà**



**Codice oggetto: 1575373 - 145 64 Kifissia**

## Una prima impressione

Elite Oasis stands as a rare gem of architectural brilliance and refined living, quietly positioned on a private street just moments from Kifissia's lively center. This residence is where bold modern design meets serene nature, creating an exclusive retreat that elevates everyday living into an extraordinary experience.

The striking minimalist façade, defined by commanding vertical lines, sets the tone for the home's sophisticated ambiance. Inside, a soaring double-height living room drenched in natural light invites effortless gatherings and tranquil moments, with panoramic views framing the lush garden and the sleek, elongated private pool. The seamless flow between the expansive dining area and the gourmet kitchen—highlighted by a sculptural natural stone island accented with brushed brass—balances style with functionality, crafting the perfect backdrop for both entertaining and everyday ease.

Ascending to the first floor reveals two serene master suites, each thoughtfully designed with private sitting areas and luxurious en-suite bathrooms. Rich wood accents, ambient lighting, and handpicked textures cultivate an intimate warmth throughout. A standout feature—a couture-inspired walk-in wardrobe with glass panels and subtle lighting—transforms daily routines into moments of indulgence.

The second floor completes the private quarters with an additional en-suite bedroom and a lounge-style living area opening onto a secluded rooftop garden. This exclusive rooftop haven offers a unique urban escape, perfect for stargazing or sophisticated entertaining amid lush greenery and breathtaking skyline views.

The basement level extends comfort and autonomy with a private guest suite, a staff apartment, a fully equipped laundry room, generous storage, and a spacious playroom designed for both fun and relaxation. A landscaped light well ensures natural brightness, while a two-car garage with direct internal access guarantees security and convenience. Every space is effortlessly connected by an internal staircase and elevator, providing smooth transitions across all levels.

**Codice oggetto: 1575373 - 145 64 Kifissia**

## **Partner di contatto**

**Per ulteriori informazioni, si prega di contattare la persona di riferimento:**

**VON POLL REAL ESTATE Athens**

---

**Patriarchou Ioakim 19, 10675 Athina**

**Tel.: +30 21 06 14 87 77**

**E-Mail: [salesgreece@von-poll.com](mailto:salesgreece@von-poll.com)**

*Alla clausola di esclusione di responsabilità di von Poll Immobilien GmbH*

---

**[www.von-poll.com](http://www.von-poll.com)**