

Amsterdam

# Amstelveenseweg 711

*Codice oggetto: NL25185576*



**PREZZO D'ACQUISTO: 1.650.000 EUR • SUPERFICIE NETTA: ca. 174 m<sup>2</sup> • VANI: 4**

**Codice oggetto: NL25185576 - 1081JE Amsterdam**

- A colpo d'occhio
- La proprietà
- Una prima impressione
- Dettagli dei servizi
- Tutto sulla posizione
- Ulteriori informazioni
- Partner di contatto

**Codice oggetto: NL25185576 - 1081JE Amsterdam**

## A colpo d'occhio

Codice oggetto	NL25185576	Prezzo d'acquisto	1.650.000 EUR
Superficie netta	ca. 174 m <sup>2</sup>		
Vani	4		
Camere da letto	3		

Codice oggetto: NL25185576 - 1081JE Amsterdam

## La proprietà



Codice oggetto: NL25185576 - 1081JE Amsterdam

## La proprietà



Codice oggetto: NL25185576 - 1081JE Amsterdam

## La proprietà



**Codice oggetto: NL25185576 - 1081JE Amsterdam**

## La proprietà



Codice oggetto: NL25185576 - 1081JE Amsterdam

## La proprietà



Codice oggetto: NL25185576 - 1081JE Amsterdam

## La proprietà



**Codice oggetto: NL25185576 - 1081JE Amsterdam**

## La proprietà



Codice oggetto: NL25185576 - 1081JE Amsterdam

## La proprietà



Codice oggetto: NL25185576 - 1081JE Amsterdam

## La proprietà



Codice oggetto: NL25185576 - 1081JE Amsterdam

## La proprietà



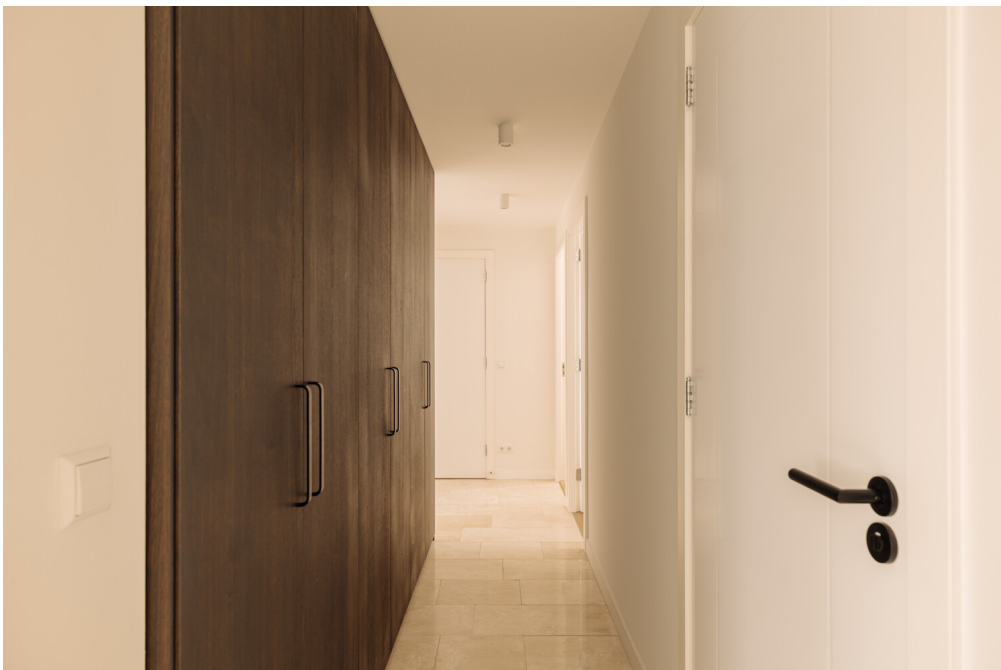
Codice oggetto: NL25185576 - 1081JE Amsterdam

## La proprietà



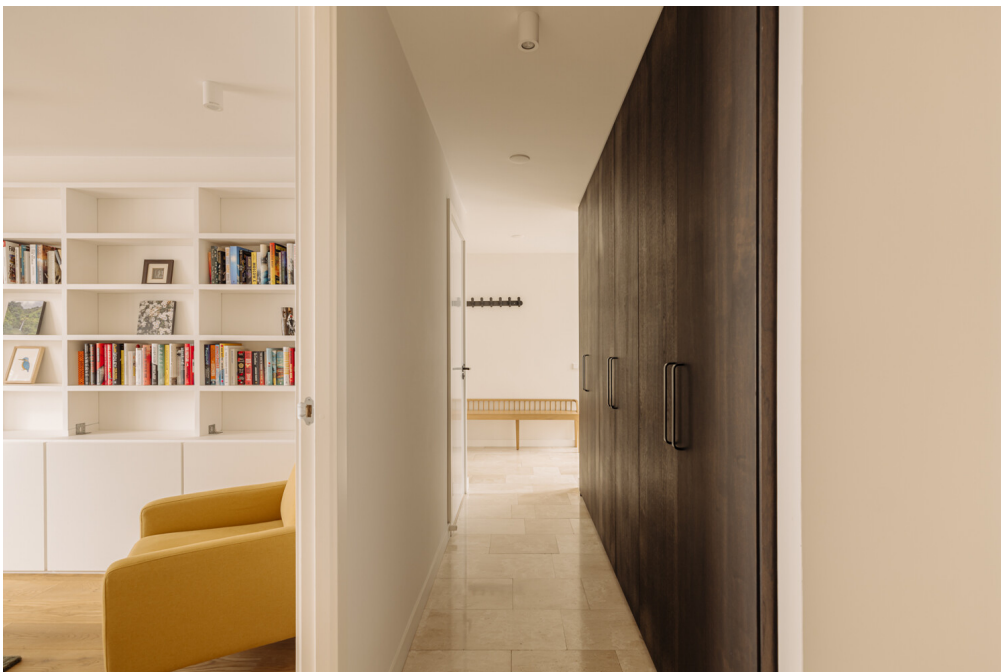
Codice oggetto: NL25185576 - 1081JE Amsterdam

## La proprietà



Codice oggetto: NL25185576 - 1081JE Amsterdam

## La proprietà



Codice oggetto: NL25185576 - 1081JE Amsterdam

## La proprietà



Codice oggetto: NL25185576 - 1081JE Amsterdam

## La proprietà



Codice oggetto: NL25185576 - 1081JE Amsterdam

## La proprietà



Codice oggetto: NL25185576 - 1081JE Amsterdam

## La proprietà



Codice oggetto: NL25185576 - 1081JE Amsterdam

## La proprietà



Codice oggetto: NL25185576 - 1081JE Amsterdam

## La proprietà



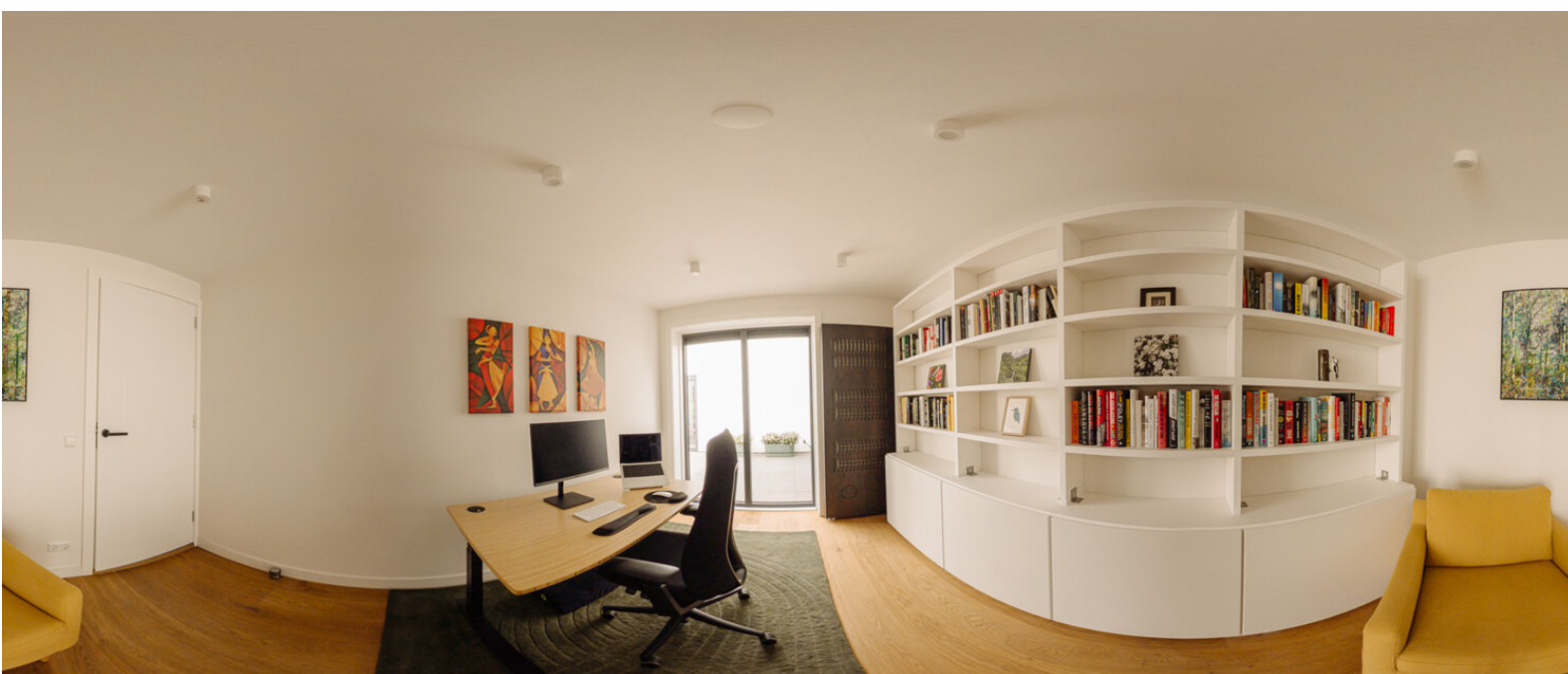
Codice oggetto: NL25185576 - 1081JE Amsterdam

## La proprietà



Codice oggetto: NL25185576 - 1081JE Amsterdam

## La proprietà



**Codice oggetto: NL25185576 - 1081JE Amsterdam**

## La proprietà



**Codice oggetto: NL25185576 - 1081JE Amsterdam**

## Una prima impressione

Unique Patio Bungalow of 174 m<sup>2</sup> overlooking the water at Gijsbrecht van Amstelpark

This exceptional patio home, designed by renowned architects Claus en Kaan and built in 1998, combines light, space, and tranquility in one of the most desirable locations of Amsterdam. With a generous living space of 174 m<sup>2</sup>, three bedrooms, and expansive outdoor areas seamlessly connected to the interior, this home offers comfort and style in equal measure.

In 2021, both the kitchen and bathroom were completely renovated, and a range of custom-built wardrobes were added, ensuring optimal use of space. The property also comes with private on-site parking – a true rarity in this area.

Large windows throughout flood the home with natural light, while the patio and terraces extend the living space outdoors, creating a wonderful sense of openness and freedom.

**Codice oggetto: NL25185576 - 1081JE Amsterdam**

## Dettagli dei servizi

The entrance hall provides access to all rooms. The spacious living room stretches to the rear and features a stylish open kitchen (renewed in 2021) equipped with every modern built-in appliance. Two large sliding doors connect the living room to the outdoor spaces, perfect for dining and relaxing.

At the front is a large storage/utility room with washing machine connection and a direct exit to the front of the house.

There are three bedrooms: the primary bedroom at the front boasts a generous walk-in closet, while the other two bedrooms are positioned around the patio.

The luxurious bathroom, also renovated in 2021, features a bathtub, walk-in shower, elegant marble double sinks, and a WC. Additionally, the hallway includes a guest WC and several beautifully crafted built-in wardrobes.

**Codice oggetto: NL25185576 - 1081JE Amsterdam**

## Tutto sulla posizione

The property enjoys an exceptionally quiet setting, tucked away behind the Amstelveenseweg. It is wonderfully central, close to major roads and within easy reach of the A10 ring road.

On foot or by bike, you can quickly access the Gijsbrecht van Aemstelpark, Nieuwe Meer, Amsterdamse Bos, and Amstelpark. Sports facilities, including tennis and hockey fields, as well as NS Station Zuid/WTC, are nearby.

For shopping, the modern Gelderlandplein mall is just a stone's throw away across the park. The home is ideally situated between Amstelveen's vibrant city center and Amsterdam's inner city – both easily reachable within 10 minutes by bike.

**Codice oggetto: NL25185576 - 1081JE Amsterdam**

## Ulteriori informazioni

- Living space: 174 m<sup>2</sup>
- Plot size: 254 m<sup>2</sup> + 1/9th share of communal grounds
- Energy label B
- Exceptional location: close to the city and nature (Amsterdamse Bos)
- Well-designed layout with versatile possibilities
- Two private parking spaces + shared use of communal grounds with additional parking
- 1/9th share of 397 m<sup>2</sup> communal land
- Leasehold paid off until May 31, 2047; future extension already arranged under favorable conditions
- Underfloor heating in living room and hallway
- Double glazing throughout
- Integrated ventilation system in ceilings
- Delivery by mutual agreement

**Codice oggetto: NL25185576 - 1081JE Amsterdam**

## Partner di contatto

Per ulteriori informazioni, si prega di contattare la persona di riferimento:

Joan Dik, Marie Christine Lodewijk & Elisabeth van Zijverden

---

De Lairesestraat 51, 1071 NT Amsterdam

Tel.: +31 20 215 99 88

E-Mail: [info@von-poll.nl](mailto:info@von-poll.nl)

*Alla clausola di esclusione di responsabilità di von Poll Immobilien GmbH*

---

[www.von-poll.com](http://www.von-poll.com)