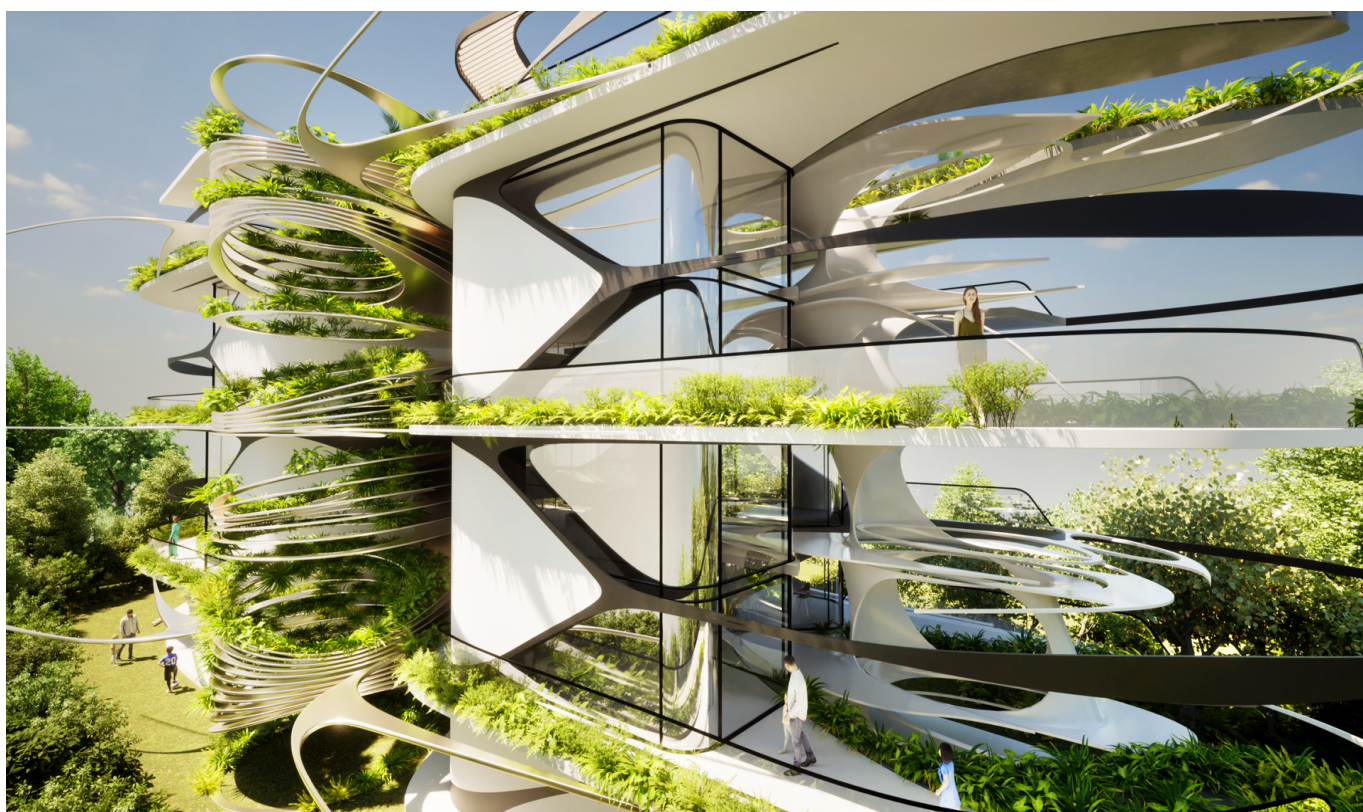


Elliniko

Luméa Residence

VP azonosító: 1223141



VÉTELÁR: 1.700.000 EUR • HASZNOS LAKÓTÉR: ca. 125,61 m² • SZOBÁK: 3

VP azonosító: 1223141 - 16777 Elliniko

- **Áttekintés**
- **Az ingatlan**
- **Az első benyomás**
- **Kapcsolattartó**

VP azonosító: 1223141 - 16777 Elliniko

Áttekintés

VP azonosító	1223141	Vételár	1.700.000 EUR
Hasznos lakótér	ca. 125,61 m ²		
Szobák	3		
Hálósobák	1		
Fürdoszobák	3		
Építés éve	2025		

VP azonosító: 1223141 - 16777 Elliniko

Az ingatlan



VP azonosító: 1223141 - 16777 Elliniko

Az ingatlan



VP azonosító: 1223141 - 16777 Elliniko

Az ingatlan



VP azonosító: 1223141 - 16777 Elliniko

Az első benyomás

Born from an architectural dialogue between light, geometry, and serenity, Luméa is not defined by square meters but by atmosphere, by flow, by light, by quiet sophistication.

The entrance opens into a seamless living, dining, and kitchen area, where space and light breathe together. Expansive glass openings invite the daylight inside, guiding the gaze toward the private pool — where water mirrors the sky and tranquility becomes tangible.

Luméa exists in perfect balance: clean lines, natural materials, soft tones, and a refined harmony in every detail.

Its three bedrooms are conceived as private sanctuaries, calm, airy, and luminous. Their proportions inspire comfort without excess, while subtle design elements express understated luxury: integrated wardrobes, tactile surfaces, and light that glides gently through the rooms. Two elegant bathrooms, crafted with fine materials and contemporary design, complete the rhythm of daily living — graceful, effortless, serene.

At the heart of the residence, an inner courtyard becomes a silent breath — a private garden where air and light circulate freely, infusing the home with the essence of calm sophistication.

And beyond, the shimmering pool extends the living experience outdoors, becoming a serene reflection of sky and soul — a space where the day dissolves into stillness, and luxury reveals its most subtle form.

Luméa is not merely a residence. It is an experience of light, a hymn to serenity, a contemporary poem of living, where architecture, nature, and beauty exist in perfect harmony.

VP azonosító: 1223141 - 16777 Elliniko

Kapcsolattartó

További információért forduljon a kapcsolattartójához:

VON POLL REAL ESTATE Athens

Patriarchou Ioakim 19, 10675 Athína

Tel.: +30 21 06 14 87 77

E-Mail: salesgreece@von-poll.com

A von Poll Immobilien GmbH felelősségkizárásához

www.von-poll.com