

Paros

## Estrella Marina Plot

????????? ??????????: 1542430



???? ??????: 2.500.000 EUR

??????? ???????: 1542430 - Paros

- ☐ ?? ??? ??????
- ☐ ?? ????????
- ☐ ??? ?????? ??????????
- ☐ ????????????? ??????????????

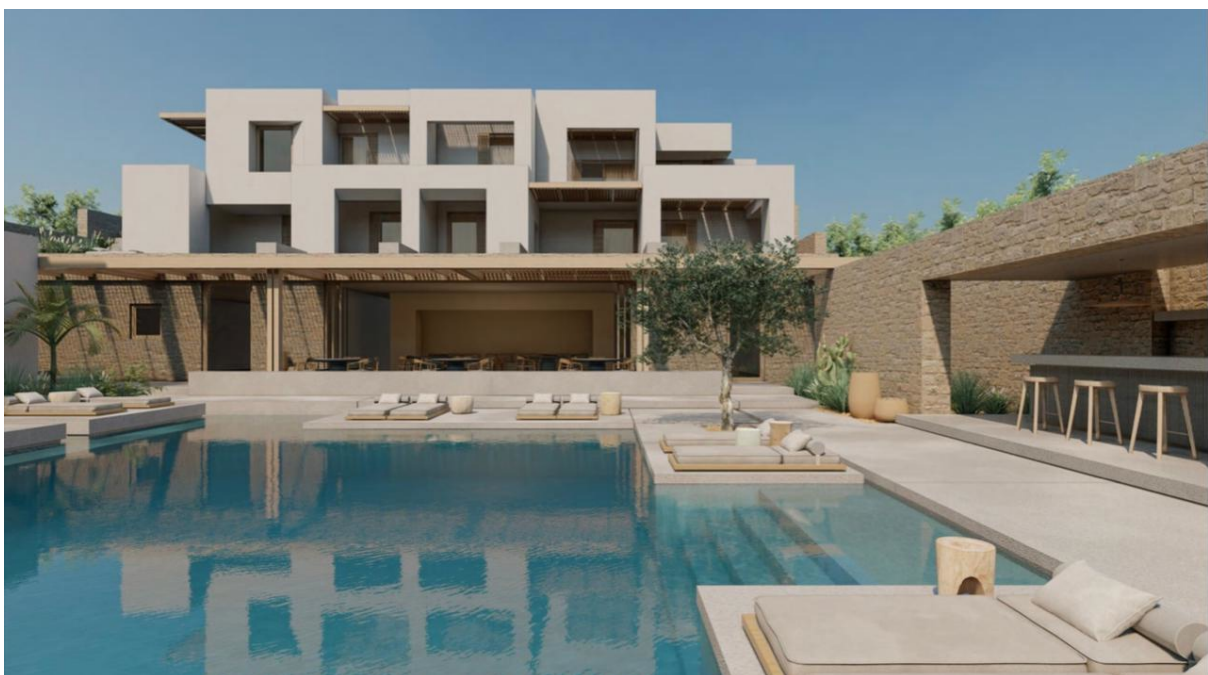
???????? ??????????: 1542430 - Paros

?? ??? ??????

???????? ??????????	1542430	???? ???????	2.500.000 EUR
		????????? ???????	ca. 2.000 m²

??????? ???????? : 1542430 - Paros

?? ????????





??????? ???????? : 1542430 - Paros

?? ????????



???????? ?????: 1542430 - Paros

?? ???????



??????? ?????????: 1542430 - Paros

?? ????????





??????? ???????: 1542430 - Paros

??? ?????? ??????????

Nestled in the heart of Naoussa, the cosmopolitan seaside gem of Paros, Estrella Marina offers a truly exceptional opportunity. This prime 2,000-square-meter plot of land is a rare find—boasting stunning panoramic views of the Aegean Sea and a location that captures both the vibrant energy and serene beauty of the island.

What sets Estrella Marina apart is its active building permit for hotel development, allowing for the immediate creation of a high-end boutique hotel that seamlessly blends modern elegance with traditional Cycladic charm. Thanks to special allowances granted for hotel use, the buildable area extends up to 2,000 square meters, enabling the development of 24 luxurious suites. These allowances often exempt certain hotel-related facilities from floor area limits, maximizing the potential for thoughtful, expansive design.

Located within walking distance of Naoussa's charming cobblestone streets, fine dining restaurants, chic boutiques, and vibrant nightlife, the property offers an unparalleled lifestyle experience. The ambiance is captivating—where the scent of jasmine, blooming geraniums, and vibrant bougainvilleas meets the soothing rhythm of Aegean life. Paros is rapidly emerging as one of Greece's most desirable luxury destinations, celebrated for its unspoiled beaches, rich cultural heritage, and timeless Cycladic architecture. Naoussa, in particular, has become a hub for gastronomy, culture, and bespoke travel experiences.

Investing in Estrella Marina means acquiring more than just land—it's an opportunity to become part of a legacy. Whether you envision an intimate boutique hotel or an exclusive island retreat, this property offers exceptional potential in one of the Aegean's most coveted locations.



???????? ??????????: 1542430 - Paros

????????????? ????????????????

??? ?????????????? ??????????????, ?????????????? ?? ??? ?????????? ?????????????? ???:

VON POLL REAL ESTATE Athens

---

Kifisias Avenue 227, 14561 Kifisia

Tel.: +30 21 06 14 87 77

E-Mail: [salesgreece@von-poll.com](mailto:salesgreece@von-poll.com)

???? ?????????? ???????? ??? von Poll Immobilien GmbH

---

[www.von-poll.com](http://www.von-poll.com)