

Glyfada

The Palms

????????? ??????????: 1099859



???? ??????: 2.380.000 EUR

??????? ???????: 1099859 - 16675 Glyfada

- ☐ ?? ??? ??????
- ☐ ?? ????????
- ☐ ??? ?????? ??????????
- ☐ ????????????? ??????????????

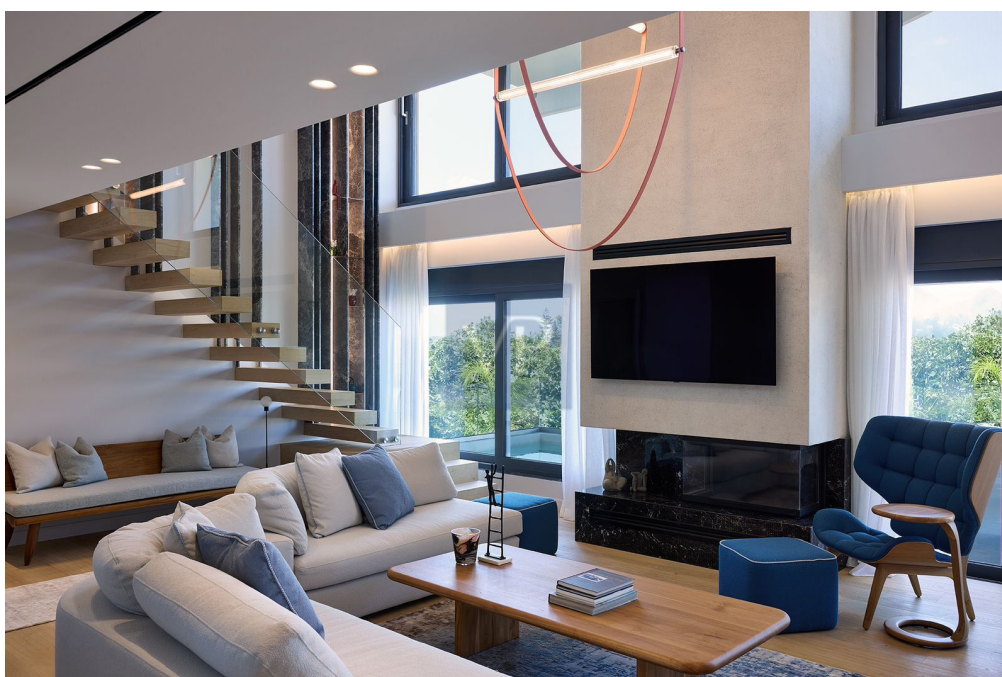
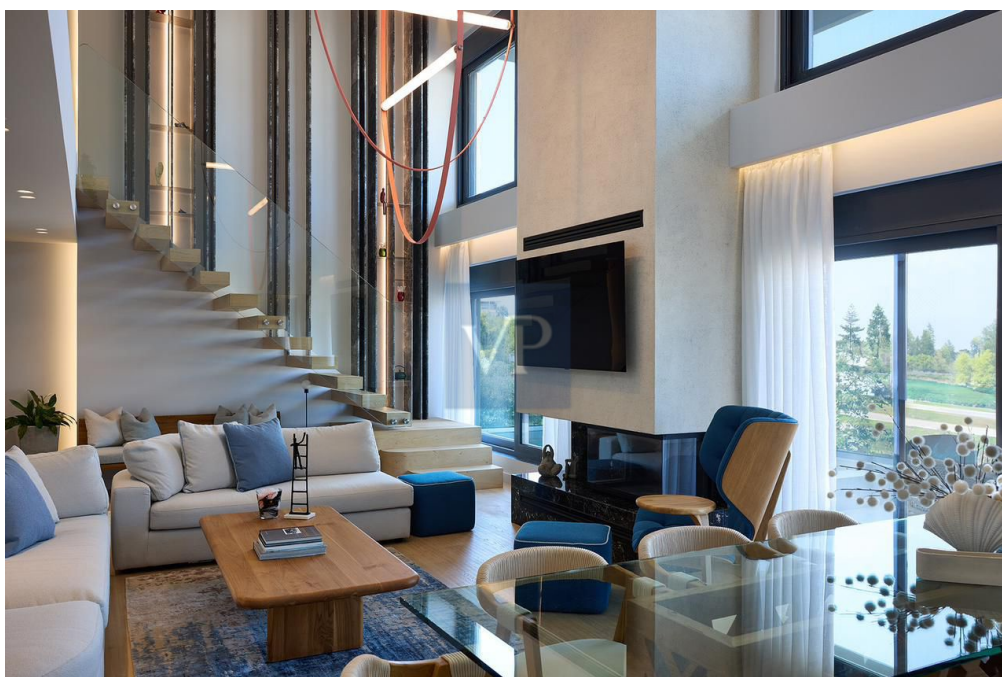
??????? ???????: 1099859 - 16675 Glyfada

?? ??? ??????

??????? ????????	1099859	???? ??????	2.380.000 EUR
?????????? ??	3	??????????	??????
??????????		?????????? ??????	ca. 232 m²
??????????	2		
???? ???????????	2025		

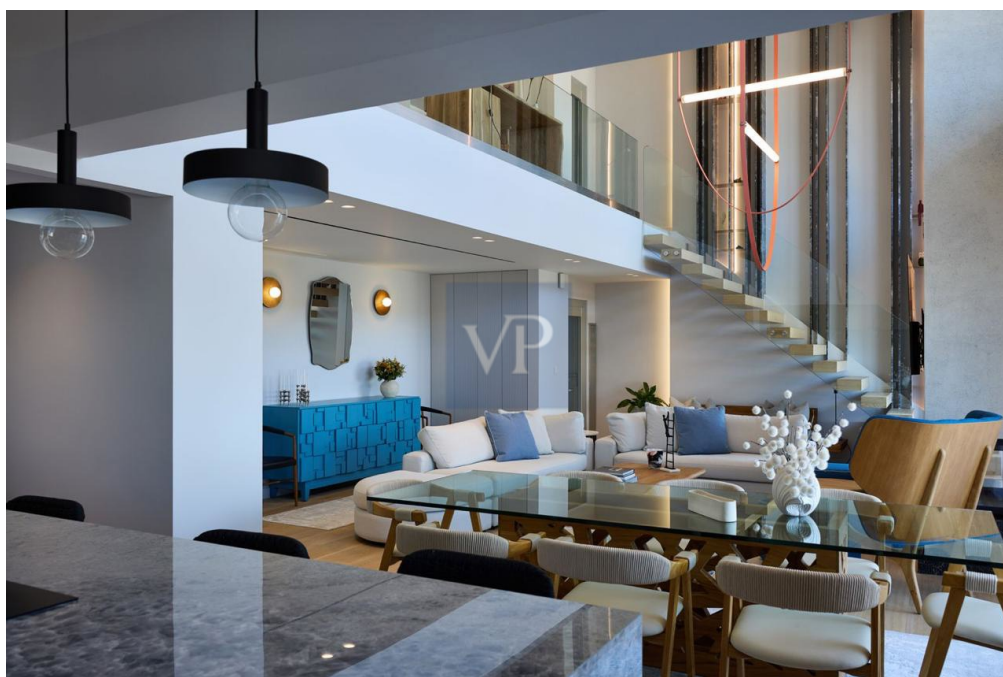
???????? ?????: 1099859 - 16675 Glyfada

?? ???????



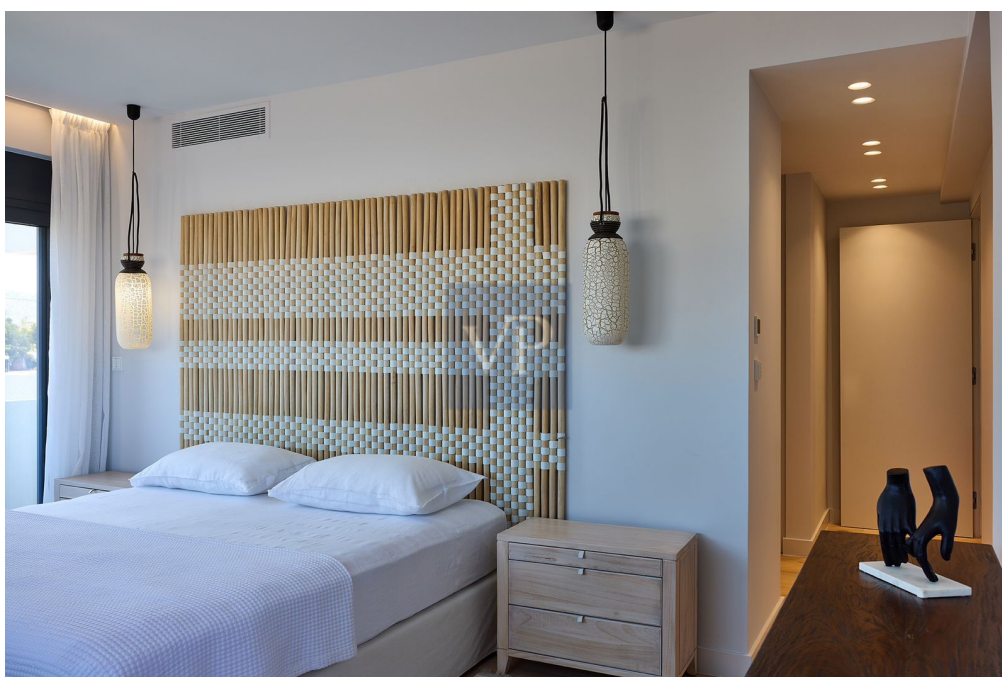
???????? ?????????: 1099859 - 16675 Glyfada

?? ?????????



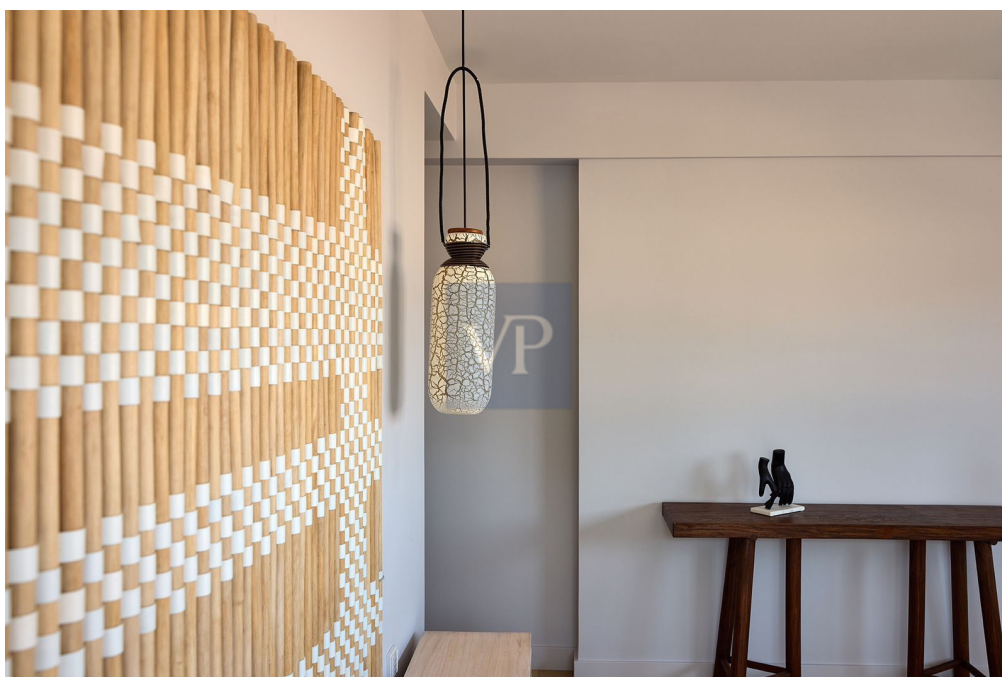
???????? ?????????: 1099859 - 16675 Glyfada

?? ?????????



???????? ?????????: 1099859 - 16675 Glyfada

?? ?????????



???????? ?????????: 1099859 - 16675 Glyfada

?? ?????????



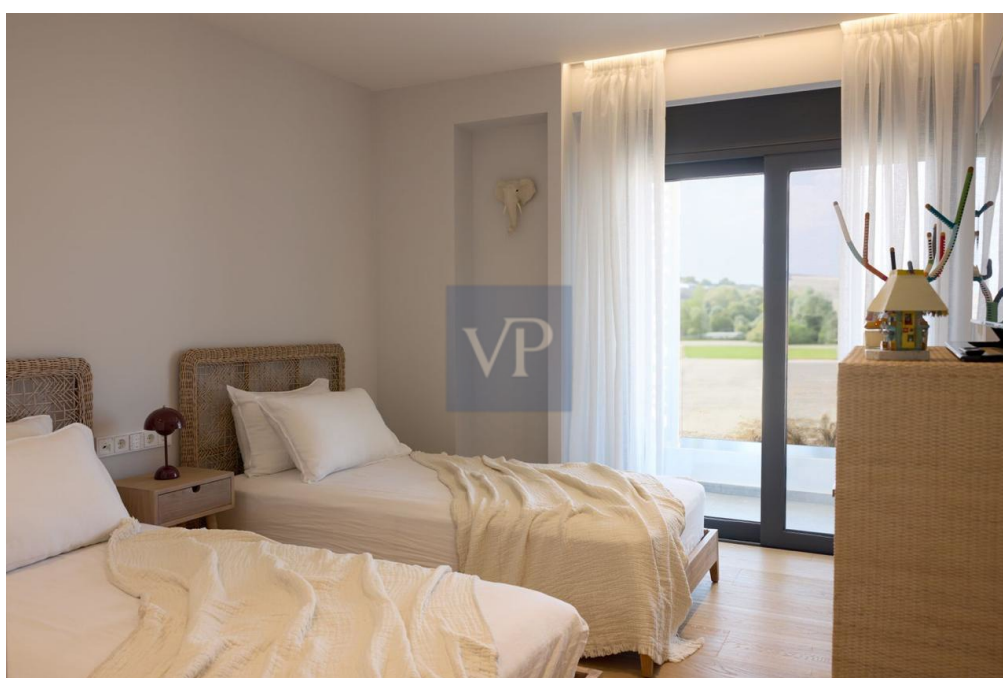
???????? ?????????: 1099859 - 16675 Glyfada

?? ?????????



???????? ?????????: 1099859 - 16675 Glyfada

?? ?????????



???????? ?????????: 1099859 - 16675 Glyfada

?? ?????????



???????? ?????????: 1099859 - 16675 Glyfada

?? ?????????



??????? ???????: 1099859 - 16675 Glyfada

??? ?????? ?????????

The Palms: 2 Level Apartment with Private Pool in Glyfada - Golf

This modern 2-level furnished apartment in Glyfada - Golf spans 232.81 sq.m. and was built in 2024. It is placed on the first and second floors and features 3 bedrooms, including a master suite, 2 bathrooms, and 1 WC. The spacious layout includes a large kitchen and a bright high-ceiling living room that opens to a private terrace with a swimming pool.

The apartment offers A++ energy class with energy-efficient windows, floor heating, an energy fireplace, and a cooling-heating pump fan coil system. Additional amenities include an internal lift, 2 closed parking spaces with electric vehicle charging infrastructure.

The apartment building offers some shared amenities include a large swimming pool, gym, and changing rooms, enhancing the living experience with both comfort and convenience.

Located 300 meters from the sea, the apartment provides stunning panoramic views of the Saronic Gulf and Ymittos Mountain. It is harmoniously integrated with its surroundings and offers easy access to Glyfada's vibrant market and the Golf Club. The property is also close to the Ellinikon Metropolitan Park and benefits from direct public transportation connections.

???????? ??????????: 1099859 - 16675 Glyfada

????????????? ????????????????

??? ?????????????? ??????????????, ?????????????? ?? ??? ?????????? ?????????????? ???:

VON POLL REAL ESTATE Athens

Kifisias Avenue 227, 14561 Kifisia

Tel.: +30 21 06 14 87 77

E-Mail: salesgreece@von-poll.com

???? ?????????? ???????? ??? von Poll Immobilien GmbH

www.von-poll.com