

Mets - Kalimarmaro

Office For rent, Mets - Kalimarmaro

????????? ??????????: 1063126



???? ??????????: 23.500 EUR

???????? ??????????: 1063126 - 11636 Mets - Kalimarmaro

- ?? ??? ??????
- ?? ??????????
- ??? ?????? ???????????
- ?????????????? ??????????????????

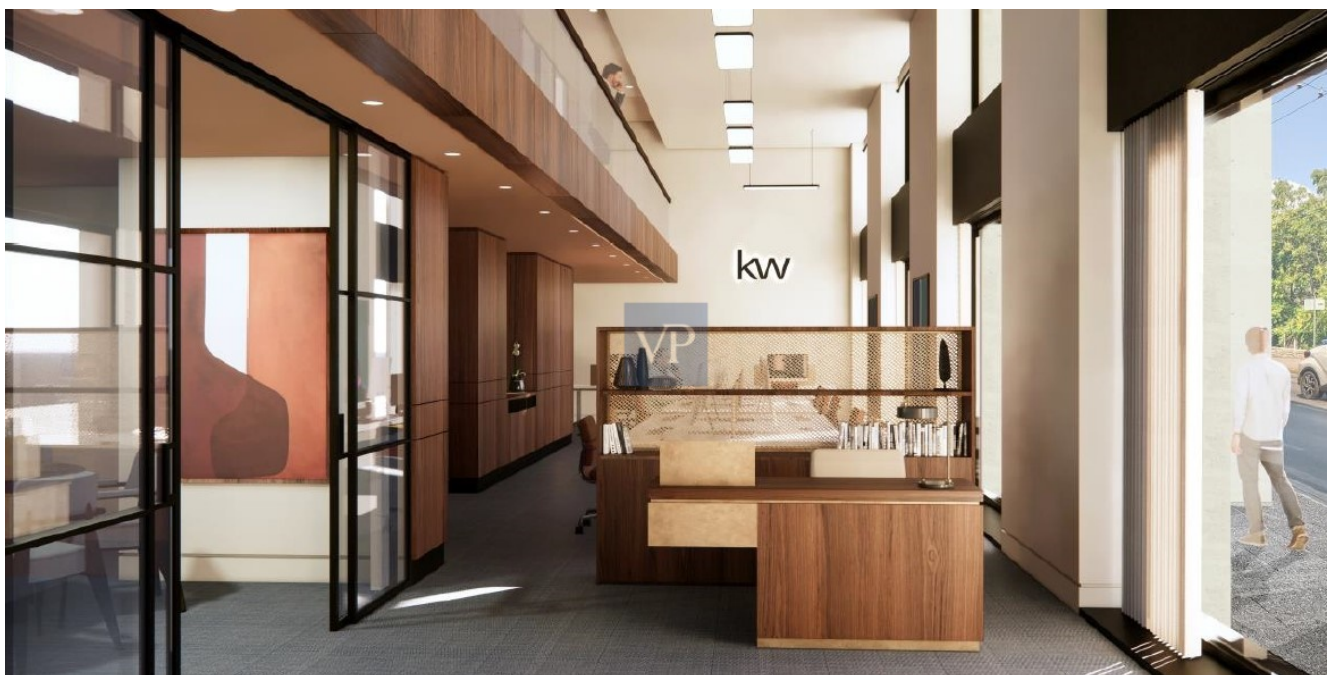
???????? ??????????: 1063126 - 11636 Mets - Kalimarmaro

?? ??? ??????

???????? ??????????	1063126	???? ??????????	23.500 EUR
?????????	1	????????? ??????	ca. 625 m ²

???????? ??????????: 1063126 - 11636 Mets - Kalimarmaro

?? ????????



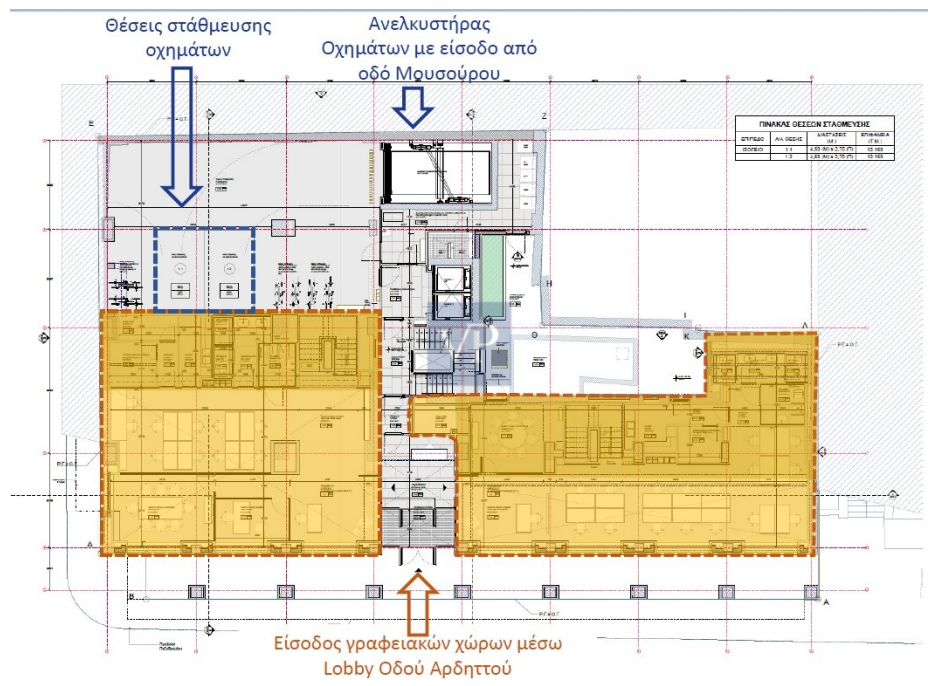
???????? ??????????: 1063126 - 11636 Mets - Kalimarmaro

?? ?????????



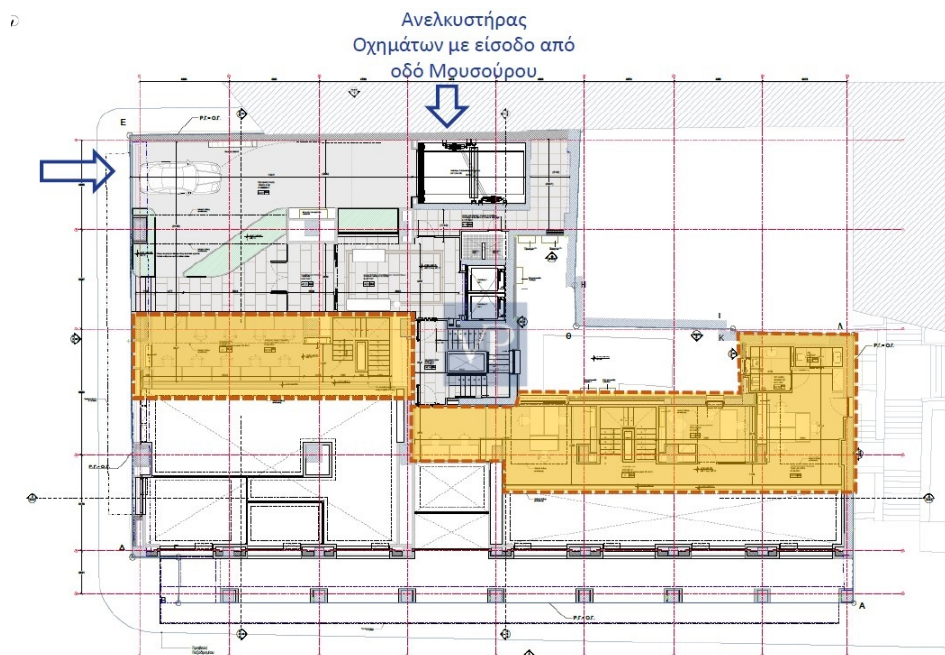
???????? ??????????: 1063126 - 11636 Mets - Kalimarmaro

?? ?????????



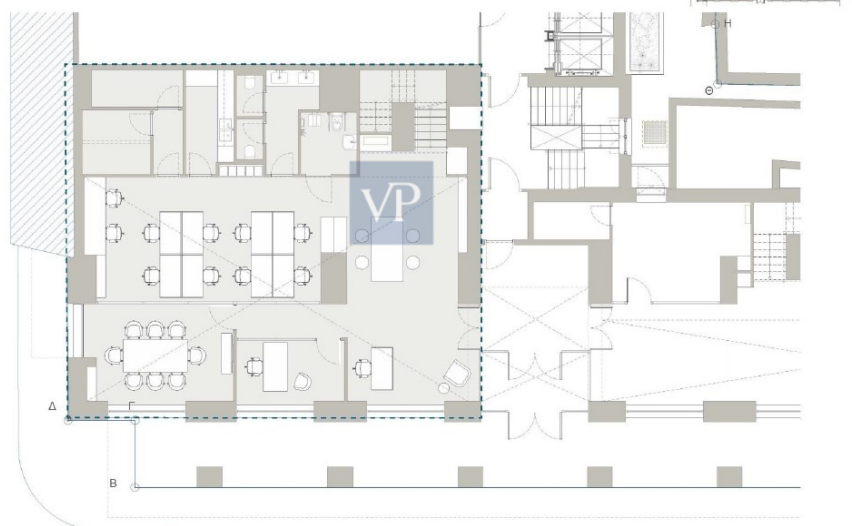
???????? ??????????: 1063126 - 11636 Mets - Kalimarmaro

?? ?????????



ΚΑΤΩΗ ΙΣΟΓΕΙΟΥ ΧΩΡΟΥ ΓΡΑΦΕΙΟΥ 1 / GROUND FLOOR PLAN OF OFFICE SPACE 1

E= 203.8 τ.μ. / A= 203.8 m²

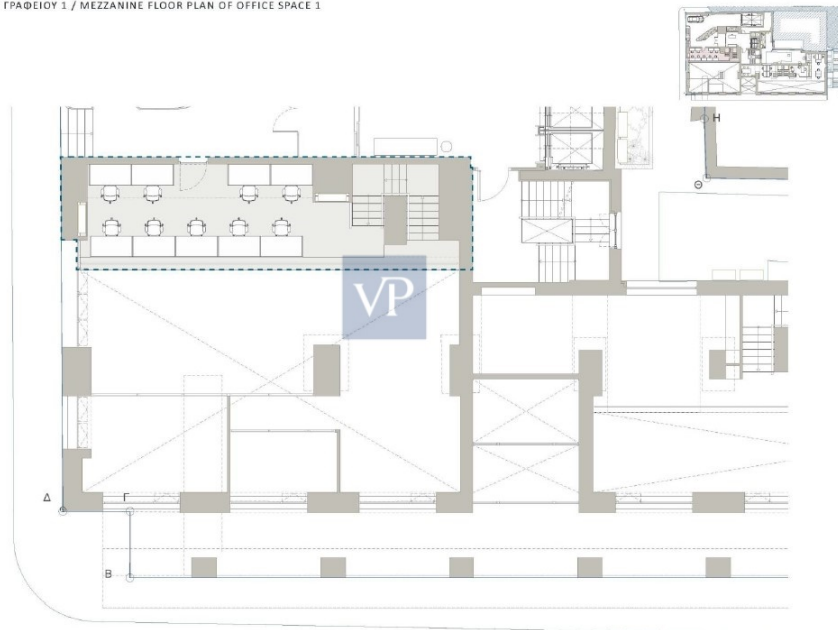


???????? ??????????: 1063126 - 11636 Mets - Kalimarmaro

?? ?????????

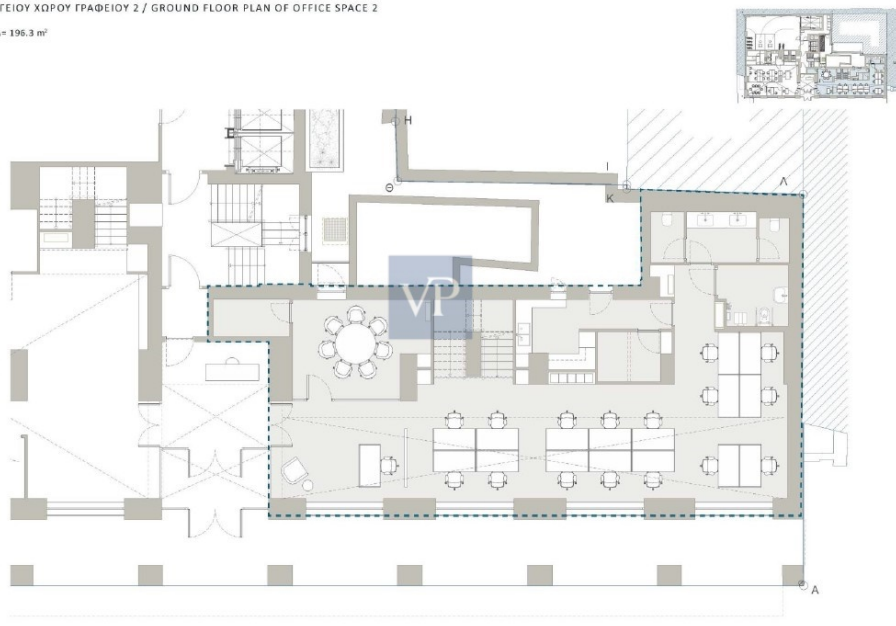
ΚΑΤΩΗ ΗΜΙΩΡΟΦΟΥ ΓΡΑΦΕΙΟΥ 1 / MEZZANINE FLOOR PLAN OF OFFICE SPACE 1

Ε= 65,0 τ.μ. / Α= 65,0 μ²



ΚΑΤΩΗ ΙΣΟΓΕΙΟΥ ΧΩΡΟΥ ΓΡΑΦΕΙΟΥ 2 / GROUND FLOOR PLAN OF OFFICE SPACE 2

Ε= 196,3 τ.μ. / Α= 196,3 μ²

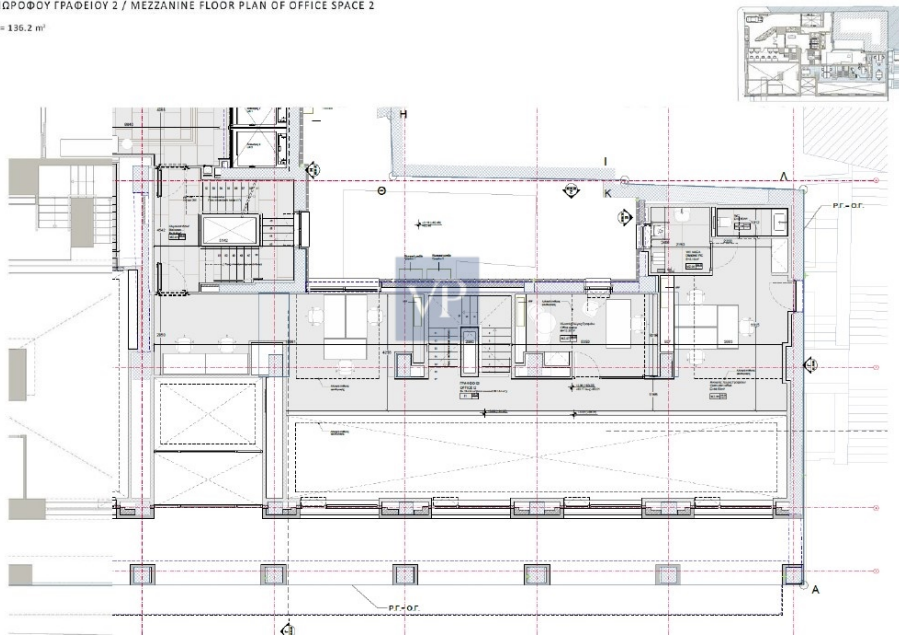


???????? ?????????: 1063126 - 11636 Mets - Kalimarmaro

?? ?????????

ΚΑΤΩΦΗ ΗΜΙΩΡΟΦΟΥ ΓΡΑΦΕΙΟΥ 2 / MEZZANINE FLOOR PLAN OF OFFICE SPACE 2

E= 136.2 τ.μ. / A= 136.2 m²



??????? ???????: 1063126 - 11636 Mets - Kalimarmaro

??? ?????? ???????????

Mets - Kalimarmaro, Office

For rent, floor: Ground floor, Mezzanine (2 Levels). The property is 625 sq.m., in Residential. It consists of 2 floors above basement, renovated in 2024, and it has:, 1 bathrooms, 6 wc, 2 kitchens and it also has 2 parkings (2 Closed). It's heating is Autonomous with Heat pump, it has Alluminum, Thermal brake frames with Double glazed - Energy Efficient windows, energy certificate: A+ and its floors are Tiles, Industrial. The property's status is: Renovated, Excellent condition, it has Acropolis view. The Office is Painted, On Corner, With Facade, Bright, Luxury, it is suitable for Business offices and it also has the following unique features and advantages: Window Screens, Network infrastructure, Electricity, Internal staircase, Security door, Security alarm, Fire extinguishing system, Electric shutters.

???????? ??????????: 1063126 - 11636 Mets - Kalimarmaro

????????????? ??????????????????

?? ?????????????? ??????????????, ?????????????? ?? ?? ?????????? ?????????????? ???:

VON POLL REAL ESTATE Athens

Kifisias Avenue 227, 14561 Kifisia
Tel.: +30 21 06 14 87 77
E-Mail: salesgreece@von-poll.com

???? ?????????? ?????????? ??? von Poll Immobilien GmbH

www.von-poll.com