

Corfu

## Blue Pearl

????????? ??????????: 1717960

???? ??????: 3.100.000 EUR • ??????????: ca. 390 m<sup>2</sup> • ?????????: 4 • ??????? ????: 3.980 m<sup>2</sup>

??????? ?????????: 1717960 - 49 100 Corfu

● ?? ??? ??????

● ?? ?????????

● ??? ?????? ??????????

● ?????????????? ????????????????

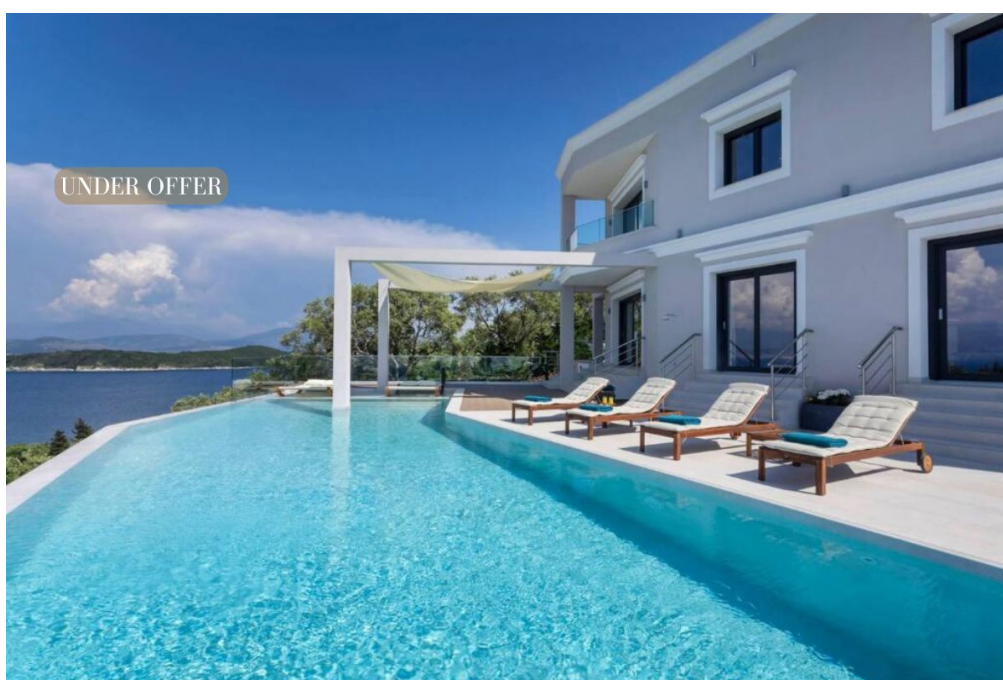
??????? ???????: 1717960 - 49 100 Corfu

?? ??? ??????

??????? ???????:	1717960	???? ??????	3.100.000 EUR
????????	ca. 390 m²		
???????	4		
????????? ???	4		
????????			
????????	4		
???? ?????????	2020		

???????? ?????????: 1717960 - 49 100 Corfu

?? ?????????





???????? ?????: 1717960 - 49 100 Corfu

?? ???????



???????? ??????????: 1717960 - 49 100 Corfu

?? ?????????





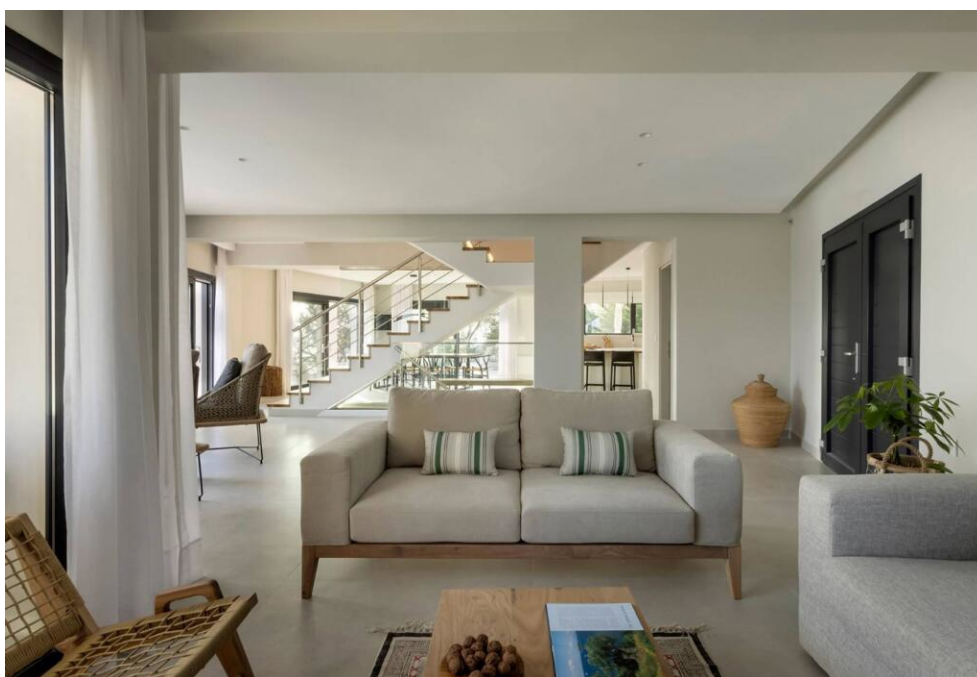
???????? ?????????: 1717960 - 49 100 Corfu

?? ?????????



???????? ?????????: 1717960 - 49 100 Corfu

?? ?????????





???????? ??????????: 1717960 - 49 100 Corfu

?? ?????????



???????? ??????????: 1717960 - 49 100 Corfu

?? ?????????





???????? ?????????: 1717960 - 49 100 Corfu

?? ?????????





???????? ?????????: 1717960 - 49 100 Corfu

?? ?????????



???????? ??????????: 1717960 - 49 100 Corfu

?? ?????????



??????? ?????????: 1717960 - 49 100 Corfu

??? ?????? ?????????

Perched above the picturesque harbour and village of Kassiopi, this contemporary villa is a private sanctuary where modern design meets the timeless beauty of the Ionian Sea. A short stroll leads to a secluded cove and pristine beach, while from the villa itself, sweeping 180° views span Imerolia Bay, Avlaki, and across the channel to Albania.

Designed for light and space, the interiors are framed by floor-to-ceiling glass, blurring the line between home and horizon. The open-plan ground floor flows seamlessly from a sleek kitchen and dining space onto a sun-soaked terrace, where infinity waters merge with endless blue. The living areas invite both relaxation and entertaining, anchored by a striking wooden staircase that connects all levels.

Upstairs, the master suite is a retreat of its own—private balcony, en-suite, and breathtaking sea views. A second guest suite offers equal comfort and perspective. The lower level transforms leisure into luxury, with a cinema and games room alongside two more generous bedrooms, one opening onto a quiet terrace.

Outdoors, the villa is made for slow Mediterranean days and lively evenings—loungers in the infinity pool, shaded dining by the BBQ, lush gardens, and uninterrupted vistas over the village and sea. An in-and-out driveway ensures privacy and ease of arrival.

Every detail here is crafted for both indulgence and investment: a serene holiday retreat that doubles as a high-yield rental opportunity. This is more than a villa—it's a front-row seat to the romance of coastal Corfu.



???????? ?????????: 1717960 - 49 100 Corfu

????????????? ????????????????

??? ?????????????? ??????????????, ?????????????? ?? ??? ?????????? ?????????????? ???:

VON POLL REAL ESTATE Athens

---

Kifisias Avenue 227, 14561 Kifisia

Tel.: +30 21 06 14 87 77

E-Mail: [salesgreece@von-poll.com](mailto:salesgreece@von-poll.com)

???? ?????????? ????????? ??? von Poll Immobilien GmbH

---

[www.von-poll.com](http://www.von-poll.com)