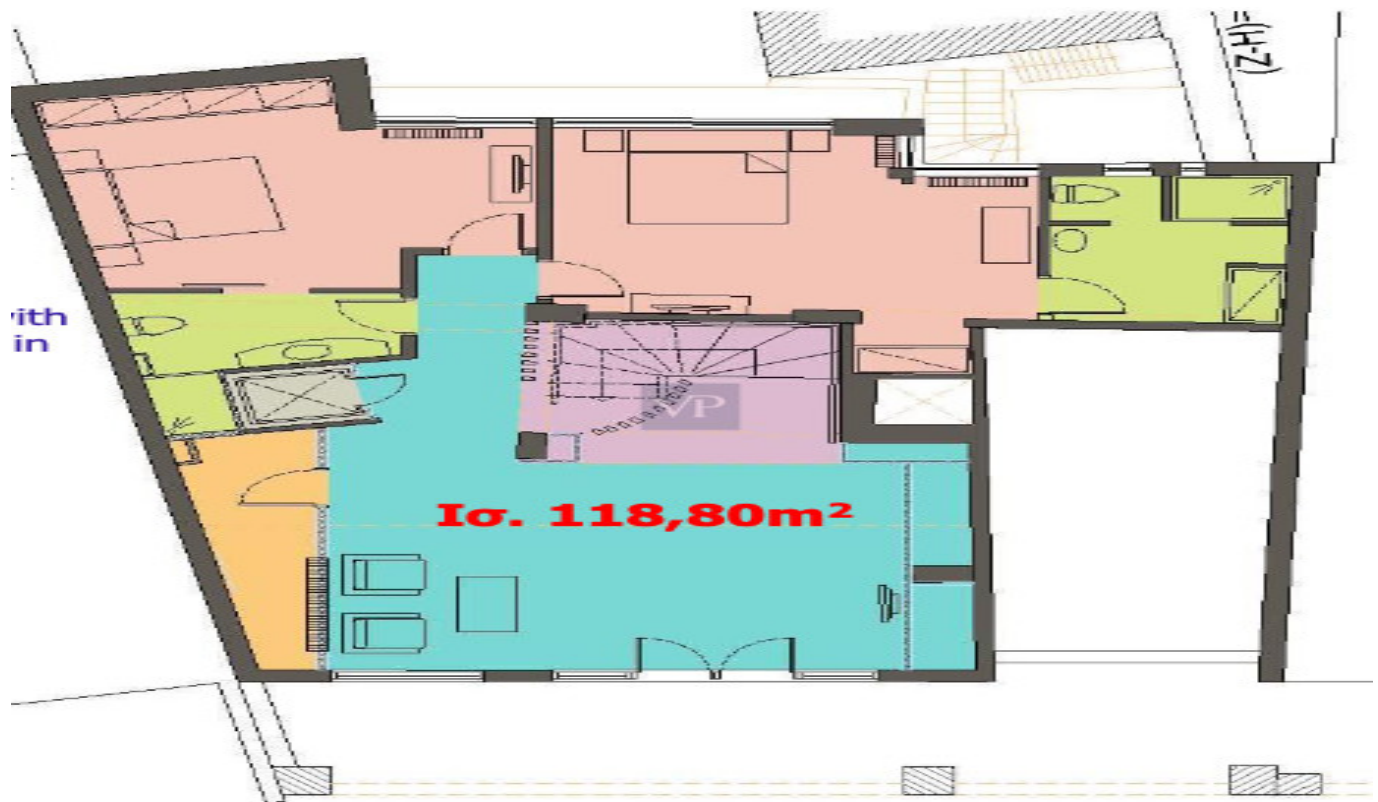


Athens Center – Center

Elegant Athenian Oasis. Renovated apartment in the heart of Athens

????????? ??????????: GR23373122



???? ??????????: 5.000 EUR • ??????????: ca. 469,1 m²

???????? ??????????: GR23373122 - 11636 Athens Center – Center

- ☐ ?? ??? ??????
- ☐ ?? ?????????
- ☐ ??? ?????? ?????????
- ☐ ????????????? ?????????????

??????? ??????????: GR23373122 - 11636 Athens Center – Center

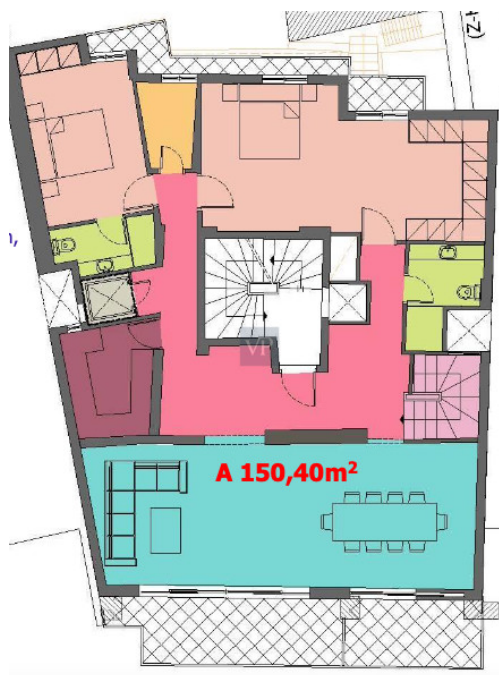
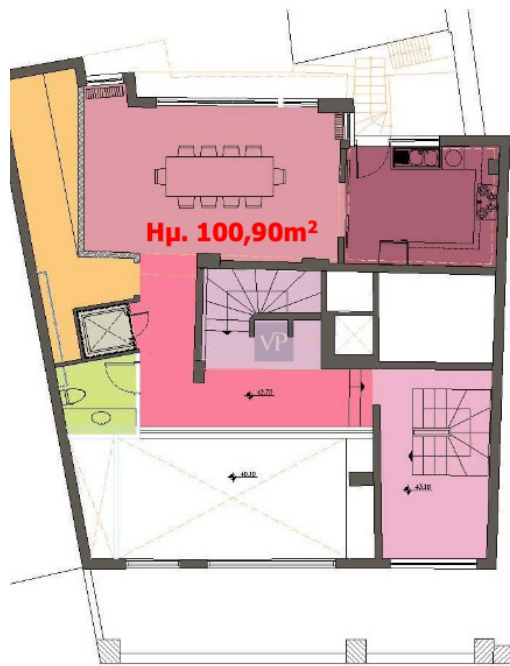
?? ??? ??????

???????? ??????????	GR23373122
???????????	ca. 469,1 m²
????????????? ???	????????? ?? ?? ?????????
???????	1
????????????? ??? ???????????	4
???????????	5
?????? ??????????????	1 x ????????????? ?????? ??????????????

?????????????	???????
???????????????????????	ca. 0 m²
??????	
????????	???????????

??????? ???????? : GR23373122 - 11636 Athens Center – Center

?? ????????



??????? ???????: GR23373122 - 11636 Athens Center – Center

?? ????????



??????? ???????: GR23373122 - 11636 Athens Center – Center

??? ?????? ??????????

This fully renovated apartment is an expansive 469.10 square meters in size, spanning from the basement to the first floor, including the mezzanine level. It is located in the charming neighborhood of Mets, just a stone's throw away from the heart of Athens and Syntagma Square. Right next to the awe-inspiring Temple of Olympian Zeus and the Olympic Swimming Pool of Athens. The basement of this apartment offers versatility and can be used as a spacious playroom or for convenient storage, covering an area of 99.00 square meters. The ground floor boasts a well-appointed living room, two luxurious master bedrooms, each with its own en-suite bathroom, a dedicated storage area, the elevator, and the primary staircase connecting the basement and the mezzanine. This level encompasses 118.80 square meters. Moving up to the mezzanine level, you'll discover a generously sized dining room, a modern kitchen, a bathroom, and a substantial storage area. The mezzanine is thoughtfully connected to the first floor via a separate staircase, and it spans 100.90 square meters. Ascending to the first floor, you'll find a spacious living and dining area, a fully-equipped kitchen, a master bedroom, another large bedroom, an additional bathroom for guests, and a supplementary storage space. This floor offers a generous living space of 150.40 square meters.

??????? ???????? : GR23373122 - 11636 Athens Center – Center

????????????? ???????????????

??? ?????????????? ?????????????, ?????????????? ?? ??? ?????????? ?????????????? ???:

VON POLL REAL ESTATE Athens

Kifisias Avenue 227 ?????
E-Mail: salesgreece@von-poll.com

To Disclaimer of von Poll Immobilien GmbH

www.von-poll.com