

Athens North – Central Greece

Office building in Kifissia

???????? ?????: GR23373075



???? ?????: 17.000 EUR • ?????: 30

??????? ?????????: GR23373075 - 14561 Athens North – Central Greece

● ?? ??? ??????

● ?? ?????????

● ??? ?????? ?????????

● ????????????? ?????????????

???????? ??????????: GR23373075 - 14561 Athens North – Central Greece

?? ??? ??????

???????? ??????????	GR23373075	????????? /	????? ??????????
????????????? ???	????????? ?? ??	?????????????????	
	?????????	??????????	
?????????	30	????????? ??????	ca. 1.750 m²
????? ?????????????	50 x ?????	????????????????????	ca. 0 m²
		??????	

???????? ?????: GR23373075 - 14561 Athens North – Central Greece

?? ???????



??????? ???????? : GR23373075 - 14561 Athens North – Central Greece

?? ????????



??????? ???????? : GR23373075 - 14561 Athens North – Central Greece

?? ????????



??????? ???????: GR23373075 - 14561 Athens North – Central Greece

?? ????????



???????? ??????????: GR23373075 - 14561 Athens North – Central Greece

?? ?????????



???????? ?????: GR23373075 - 14561 Athens North – Central Greece

?? ???????



??????? ???????: GR23373075 - 14561 Athens North – Central Greece

?? ????????



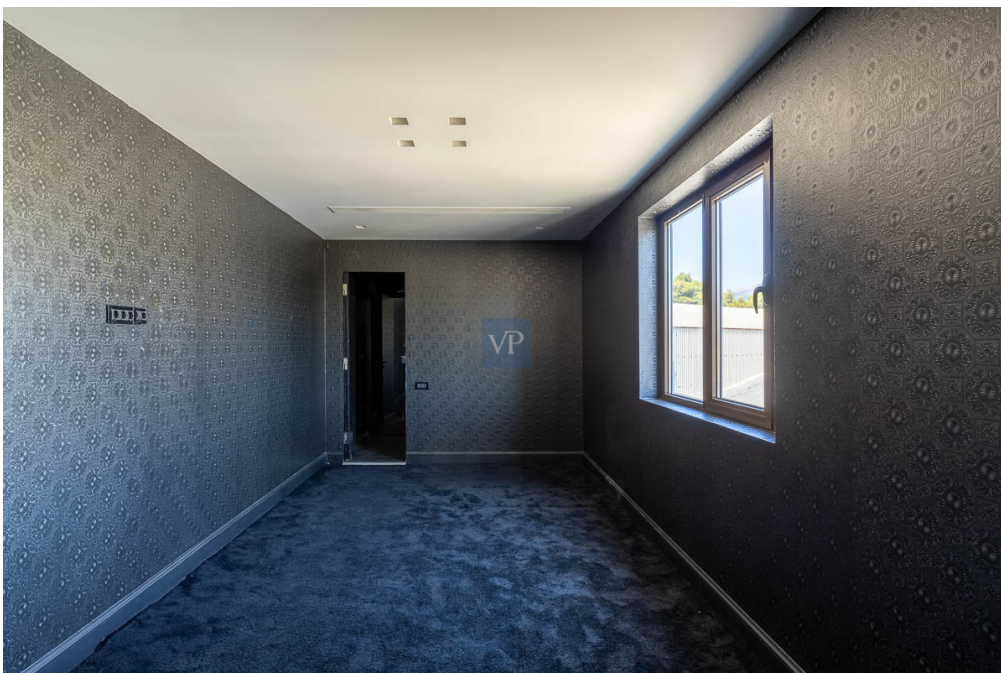
???????? ?????????: GR23373075 - 14561 Athens North – Central Greece

?? ?????????



???????? ??????????: GR23373075 - 14561 Athens North – Central Greece

?? ?????????



??????? ???????? : GR23373075 - 14561 Athens North – Central Greece

??? ?????? ?????????

LOCATION AND ACCESS Independent building for rent within a plot of land, in the Industrial Park (West) of Kifissia. The property is located on the National Road and has access from the side road. DESCRIPTION Independent commercial office building, total area of 1750 sq.m., two levels. - Ground floor area: 850 sq.m. * NOTE: there is a possibility of exploiting a useful height of 7 m. - Area of the 1st floor : 850 m². - Area of auxiliary space - attic: 50 sq.m. - Area of the surrounding area: 1700 sq.m. (* 50+ parking spaces) - Modern building, ready to use, fully functional. FACILITIES - Thermal insulation frames - Energy and reflective double crystal windows - Central heating and air conditioning system with independence - Central ventilation - Fire detection and fire safety system - Alarm system - Structured cabling cat6 - Optical fibers - Telecommunications and computer network - IT / Server Room, UPS - BMS (Building Management System) - Elevator - Automatic security entrance door - Movable and sliding office partitions, (25 partitioned offices) - Reception area - reception, configured toilets (8 WC), kitchenette - No common charges - Free parking (more than 50 spaces) and covered parking

??????? ?????????: GR23373075 - 14561 Athens North – Central Greece

????????????? ????????????????

??? ?????????????? ??????????????, ?????????????? ?? ??? ?????????? ?????????????? ???:

VON POLL REAL ESTATE Athens

Kifisias Avenue 227 ?????
E-Mail: salesgreece@von-poll.com

To Disclaimer of von Poll Immobilien GmbH

www.von-poll.com