

Amsterdam

Jan van Eijckstraat 26 1

????????? ??????????: NL23185448



???? ??????: 1.475.000 EUR • ??????????: ca. 199 m² • ??????: 6

??????? ???????? : NL23185448 - 1077 LM Amsterdam

- ☐ ?? ??? ??????
- ☐ ?? ????????
- ☐ ???????????? ??????????
- ☐ ??? ?????? ??????????
- ☐ ???????????????? ??? ??????????
- ☐ ??? ??? ??? ????????????
- ☐ ?????? ???????????????
- ☐ ?????????????? ???????????????

???????? ??????????: NL23185448 - 1077 LM Amsterdam

?? ??? ??????

???????? ??????????	NL23185448
????????????	ca. 199 m²
?????????????? ???	?????????? ?? ?? ??????????
??????????	6
?????????????? ??? ????????????	5
????? ??????????????	1928

????? ?????????	1.475.000 EUR
???????????????	???????????????
?????????????????????????? ???????	ca. 0 m²

???????? ??????????: NL23185448 - 1077 LM Amsterdam

????????????? ???????????

??????????
??????????????
??????????

C

??????? ???????: NL23185448 - 1077 LM Amsterdam

?? ????????



????????? ??????????: NL23185448 - 1077 LM Amsterdam

?? ?????????



???????? ??: NL23185448 - 1077 LM Amsterdam

?? ???????



???????? ?????: NL23185448 - 1077 LM Amsterdam

?? ???????



???????? ??: NL23185448 - 1077 LM Amsterdam

?? ???????



???????? ?????: NL23185448 - 1077 LM Amsterdam

?? ???????



???????? ??: NL23185448 - 1077 LM Amsterdam

?? ???????



???????? ?????: NL23185448 - 1077 LM Amsterdam

?? ???????



???????? ?????: NL23185448 - 1077 LM Amsterdam

?? ???????



???????? ??: NL23185448 - 1077 LM Amsterdam

?? ???????



???????? ?????: NL23185448 - 1077 LM Amsterdam

?? ???????



???????? ?????: NL23185448 - 1077 LM Amsterdam

?? ???????



???????? ?????: NL23185448 - 1077 LM Amsterdam

?? ???????



???????? ??: NL23185448 - 1077 LM Amsterdam

?? ???????



???????? ?????: NL23185448 - 1077 LM Amsterdam

?? ???????



???????? ??: NL23185448 - 1077 LM Amsterdam

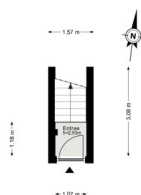
?? ???????



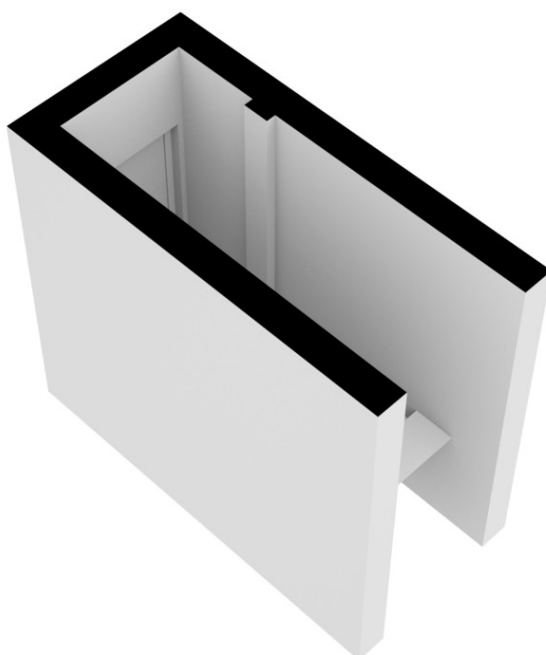
???????? ??: NL23185448 - 1077 LM Amsterdam

?? ????????

Jan van Eijckstraat 26-1 - Amsterdam
Begane grond

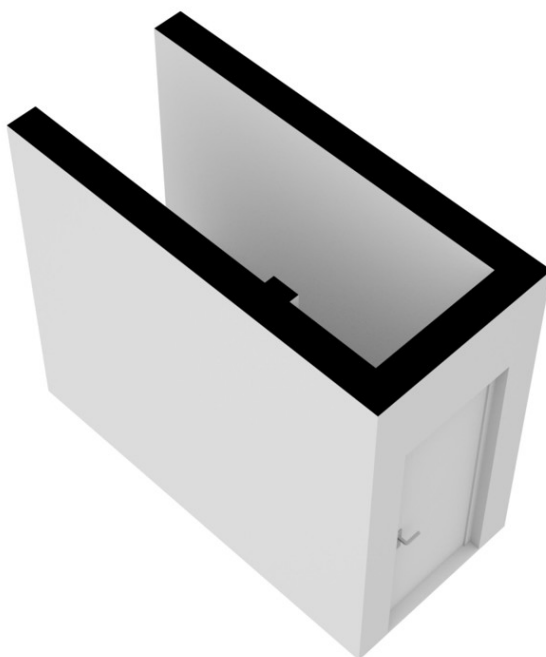


De plattegronden zijn geproduceerd voor promotionele doeleinden en ter indicatie.
Aan de plattegronden kunnen geen rechten worden ontleend.
© www.woningradex.nl

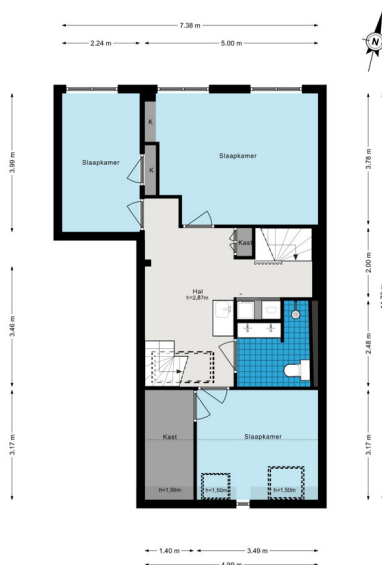


???????? ?????????: NL23185448 - 1077 LM Amsterdam

?? ?????????



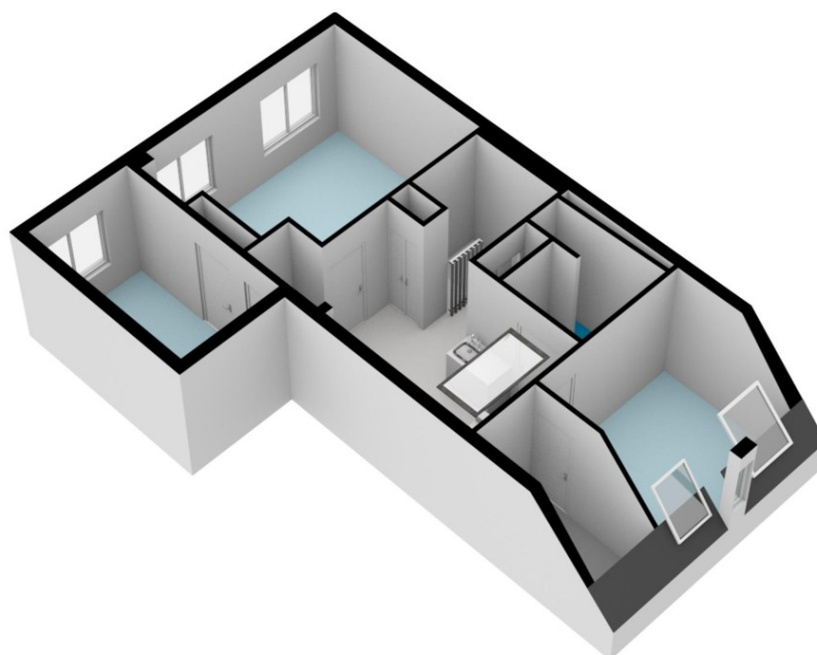
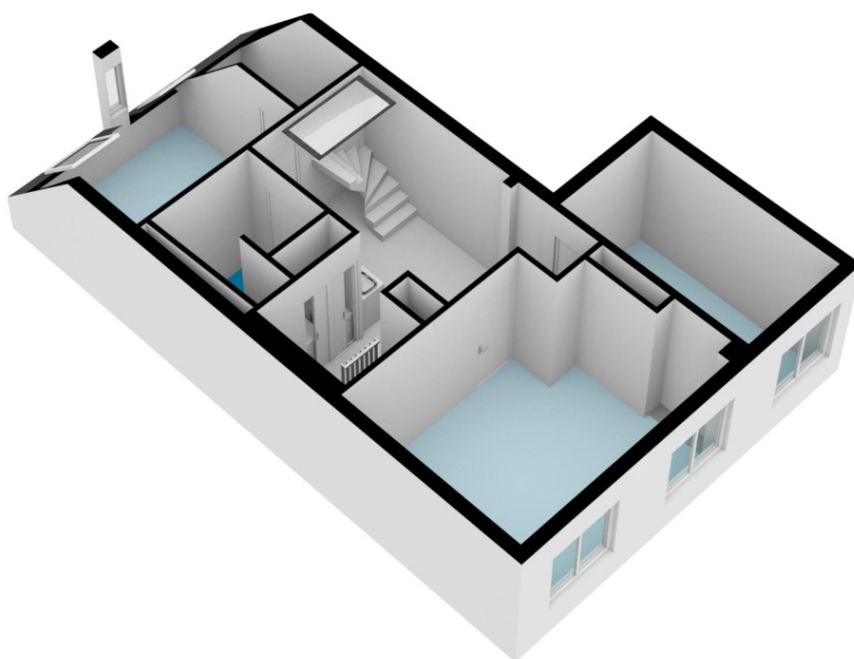
Jan van Eijckstraat 26-1 - Amsterdam
Derde verdieping



De plattegronden zijn geproduceerd voor promotionele doeleinden en ter indicatie.
Aan de plattegronden kunnen geen rechten worden ontleend.
© www.woningmedia.nl

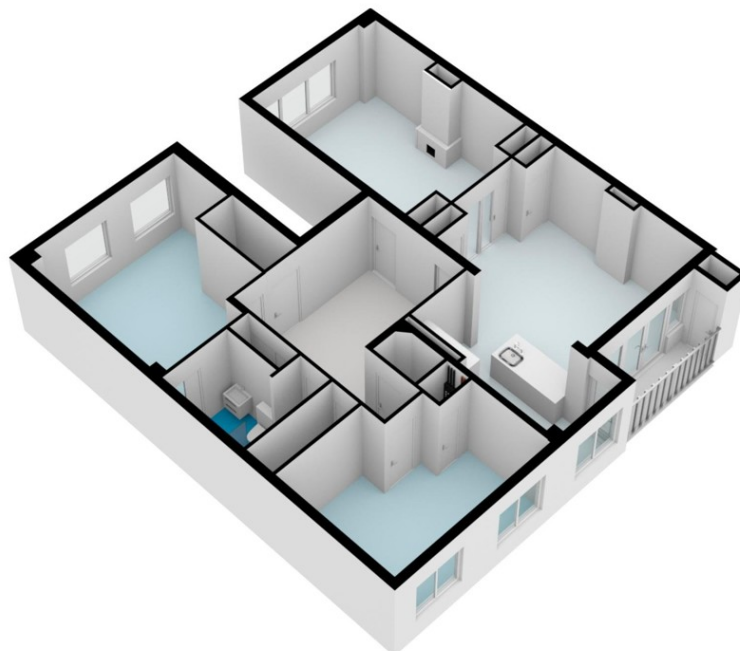
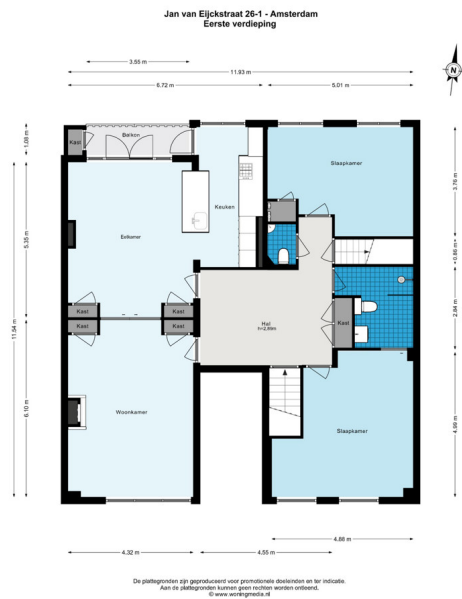
???????? ??: NL23185448 - 1077 LM Amsterdam

?? ????????



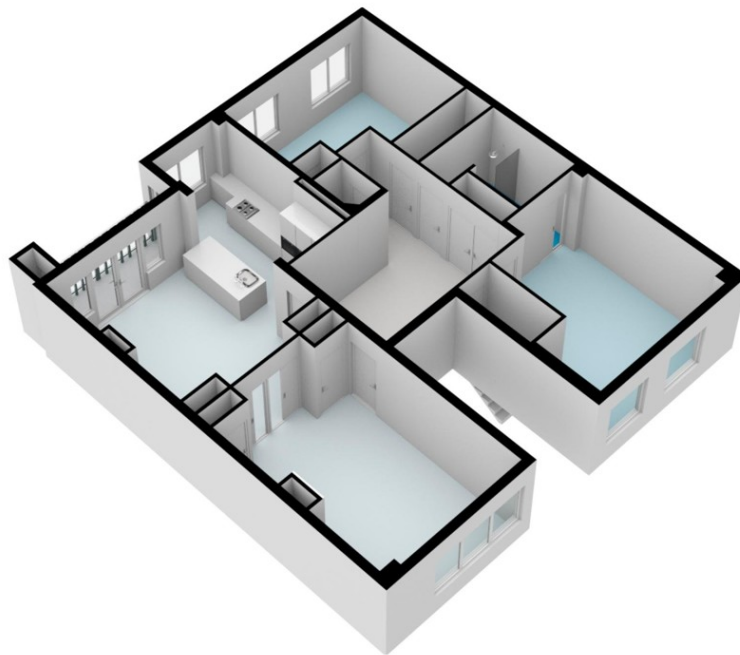
??????? ???????: NL23185448 - 1077 LM Amsterdam

?? ????????



???????? ?????: NL23185448 - 1077 LM Amsterdam

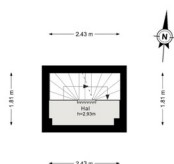
?? ???????



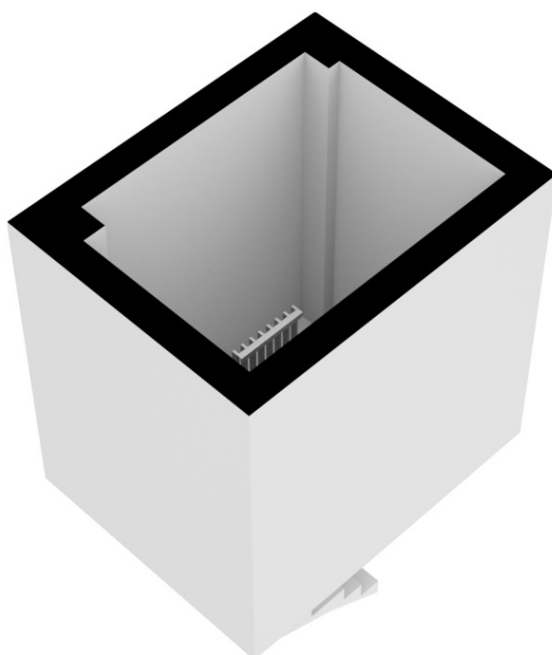
???????? ??: NL23185448 - 1077 LM Amsterdam

?? ???????

Jan van Eijckstraat 26-1 - Amsterdam
Tweede verdieping

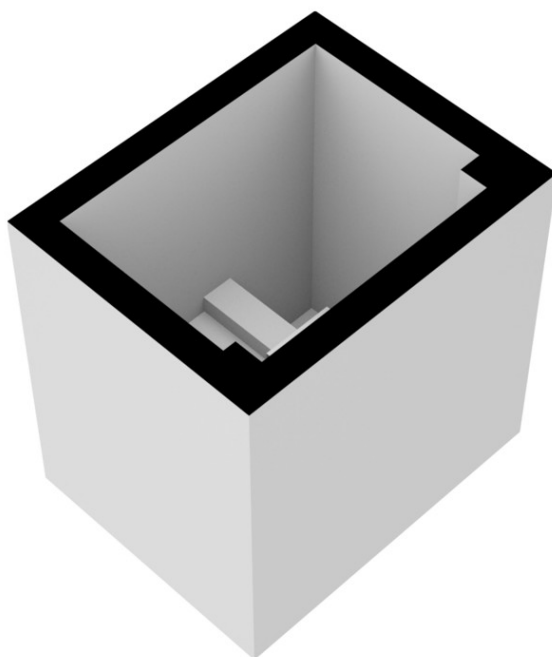


De plattegronden zijn geproduceerd voor promotionele doeleinden en ter indicatie.
Aan de plattegronden kunnen geen rechten worden ontleend.
© www.vonpoll.nl

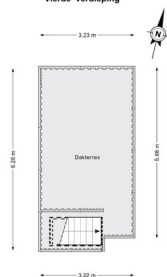


???????? ??: NL23185448 - 1077 LM Amsterdam

?? ???????



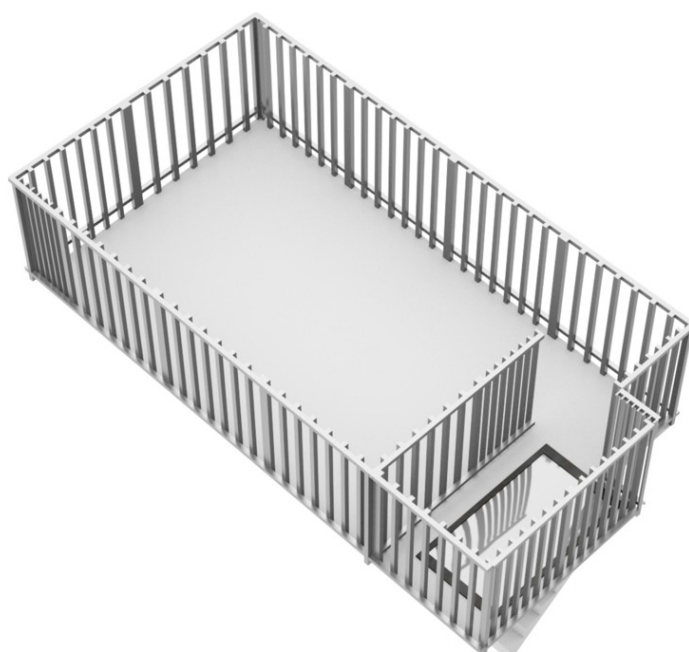
Jan van Eijckstraat 26-1 - Amsterdam
Vierde verdieping



De plattegronden zijn geprojecteerd voor promotionele doeleinden en ter indicatie.
Aan de plattegronden kunnen geen rechten worden ontleend.
© www.vonpoll.nl

??????? ???????: NL23185448 - 1077 LM Amsterdam

?? ????????



??????? ???????? : NL23185448 - 1077 LM Amsterdam

??? ?????? ?????????

Located in a fantastic location in Amsterdam-South we offer: a very attractive apartment on two floors (199 m²) with OWN ENTRY, BALCONY and ROOF TERRACE. The apartment is located near the Beethovenstraat, Station Zuid/WTC and the main roads.

??????? ???????? : NL23185448 - 1077 LM Amsterdam

??????????????? ??? ?????????

The apartment has a private entrance, here you will have access to the apartment on the first floor via a generous staircase, where you will emerge into the central hallway of the apartment.

FIRST FLOOR

Through this generous hallway you have access to all the rooms on the first floor, including the living room with an adjoining dining room, open kitchen and access to a balcony. The spacious living room has a beautiful marble fireplace. Through the sliding doors one enters the dining room where you will find the modern luxury kitchen equipped with an assortment of high-quality built-in appliances. The kitchen includes an induction hob, dishwasher, oven/microwave, steam oven and coffee machine all from Miele and a Quooker.

On the first floor there are also 2 large (bed) rooms. The room at the front has an attached bathroom with shower and toilet. The separate toilet is located opposite the bathroom. Through the hall you can reach the third floor by stairs.

THIRD FLOOR

This floor has no less than 3 bedrooms and a practical storage closet. It is an ideal floor for children. With the spacious landing there is immediately a nice space for a TV/PLAY/STUDY corner. This floor also features a (modern) bathroom with sink and shower.

ROOF TERRACE

Through a staircase you reach the fourth floor where the sunny roof terrace is located with stunning views over Amsterdam and the skyline of the ZUID-AS.

??????? ???????? : NL23185448 - 1077 LM Amsterdam

??? ??? ??? ???????????

The apartment is located on one of the nicer streets with lots of green in combination with good parking facilities in front of the door. In addition, the child-friendly neighbourhood features a wide sidewalk that serves as a separation to the street. Furthermore, there is a diverse range of stores in the neighbourhood within walking distance. The bakery BROOD is around the corner less than a five-minute walk away. Here is the Beethovenstraat located which is known for its various offer of stores and cafes.

??????? ???????? : NL23185448 - 1077 LM Amsterdam

????? ????????????

- Living area 199m2 (NEN 2580 certificate available) - Spacious and bright family home with 5 (bed) rooms - Private entrance - Balcony and sunny roof terrace - Service costs € 400.25 per month with an active VvE - Marble fireplace - Luxury kitchen with appliances - Lots of closet space available - Delivery: in consultation This information has been compiled by us with the necessary care. On our part, however, no liability is accepted for any incompleteness, inaccuracy or otherwise, or the consequences thereof. All specified sizes and surfaces are indicative. Buyer has his own duty to investigate all matters that are important to him or her. The estate agent is an advisor to the seller regarding this property. We advise you to hire an expert (NVM) broker who will guide you through the purchasing process. If you have specific wishes regarding the house, we advise you to make this known to your purchasing broker in good time and to have them investigated independently. If you do not engage an expert representative, you consider yourself to be expert enough by law to be able to oversee all matters of interest. The NVM conditions apply.

???????? ??????????: NL23185448 - 1077 LM Amsterdam

?????????????? ??????????????????

??? ????????????????? ??????????????, ????????????????? ?? ??? ?????????? ????????????????? ???:

Joan Dik, Marie Christine Lodewijk & Elisabeth van Zijverden

De Lairesestraat 51 ????????????

E-Mail: info@von-poll.nl

To Disclaimer of von Poll Immobilien GmbH

www.von-poll.com