

Amsterdam

Entrepotdok 207

???????? ?????: NL23185444



???? ?????: 1.150.000 EUR • ?????: ca. 131 m² • ?????: 4

???????? ?????????: NL23185444 - 1018 AD Amsterdam

- ?? ??? ??????
- ?? ?????????
- ????????????? ??????????
- ??? ?????? ??????????
- ????????????????? ??? ??????????
- ??? ??? ??? ?????????????
- ?????? ??????????????
- ????????????? ??????????????

???????? ?????????: NL23185444 - 1018 AD Amsterdam

?? ??? ??????

???????? ?????????	NL23185444	???? ?????	1.150.000 EUR
????????	ca. 131 m²	????????	????????
?????????? ??	?????? ?? ?? ??????	????????????????	ca. 0 m²
??????	4	????	
?????????? ?? ????????	2		
???? ?????????	2001		

???????? ??????????: NL23185444 - 1018 AD Amsterdam

?????????????? ???????????

??????????
??????????????
??????????

A+

???????? ?????: NL23185444 - 1018 AD Amsterdam

?? ???????



???????? ?????: NL23185444 - 1018 AD Amsterdam

?? ???????



???????? ?????: NL23185444 - 1018 AD Amsterdam

?? ???????



???????? ??: NL23185444 - 1018 AD Amsterdam

?? ???????



???????? ?????: NL23185444 - 1018 AD Amsterdam

?? ???????



??????? ???????? : NL23185444 - 1018 AD Amsterdam

?? ????????



???????? ?????: NL23185444 - 1018 AD Amsterdam

?? ???????



???????? ?????: NL23185444 - 1018 AD Amsterdam

?? ???????



???????? ?????: NL23185444 - 1018 AD Amsterdam

?? ???????



???????? ??: NL23185444 - 1018 AD Amsterdam

?? ???????



???????? ??: NL23185444 - 1018 AD Amsterdam

?? ???????



???????? ?????: NL23185444 - 1018 AD Amsterdam

?? ???????



???????? ??: NL23185444 - 1018 AD Amsterdam

?? ???????



???????? ?????: NL23185444 - 1018 AD Amsterdam

?? ???????



???????? ?????: NL23185444 - 1018 AD Amsterdam

?? ????????



???????? ??: NL23185444 - 1018 AD Amsterdam

?? ???????



???????? ?????: NL23185444 - 1018 AD Amsterdam

?? ???????



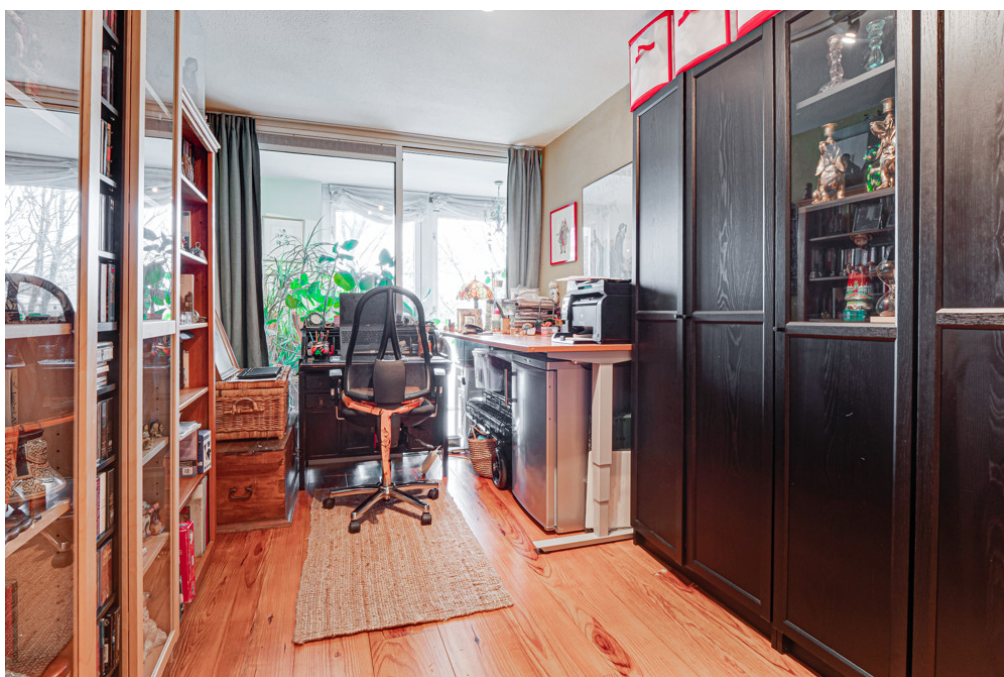
???????? ?????: NL23185444 - 1018 AD Amsterdam

?? ???????



???????? ??: NL23185444 - 1018 AD Amsterdam

?? ???????



???????? ??: NL23185444 - 1018 AD Amsterdam

?? ???????



???????? ?????: NL23185444 - 1018 AD Amsterdam

?? ???????



???????? ?????: NL23185444 - 1018 AD Amsterdam

?? ???????



???????? ?????????: NL23185444 - 1018 AD Amsterdam

?? ?????????



???????? ?????: NL23185444 - 1018 AD Amsterdam

?? ???????



??????? ???????? : NL23185444 - 1018 AD Amsterdam

??? ?????? ??????????

Super attractive apartment of approx. 140 m² (including the loggia) in the beautiful Aquartis building. This house is located in the Plantagebuurt (Center), in a very beautiful, green and quiet location with a wide view on the trees and singel water of Artis. Due to the open location and no traffic in front of the door, this area is very child-friendly. The Plantagebuurt is known for its green character. In the vicinity of this house you will find Artis, the Hortus Botanicus, the Wertheim- and Oosterpark, but also Theater Carré, for example. The neighborhood has many amenities such as nurseries, primary schools, shops and restaurants. The location is also very convenient in relation to public transport (tram 9 and 14, metro and bus) and public roads such as the A-10 ring. Parking is possible according to the permit system and in the parking garage under the building and rental places in Parkings nearby.

??????? ???????? : NL23185444 - 1018 AD Amsterdam

???????????????? ???? ?????????

Particularities:

- Green and quiet environment, yet located in the Center.
- Very attractive house in the beautiful Aquartis building.
- Well insulated, energy label A+
- Ground lease (erfpacht) bought off until 2049.
- The owner has already requested for the everlasting ground lease.

This information has been carefully compiled by us. However, no liability is accepted for any incompleteness, inaccuracy or otherwise, or the consequences thereof. All dimensions and surface areas given are indicative only. Buyer has its own duty to investigate all matters of importance to it. With regard to this property the real estate agent is advisor to the seller. We advise you to use an expert (NVM) real estate agent to guide you through the purchase process. If you have specific wishes regarding the house, we advise you to make these known to your buying broker in good time and to do your own research on this matter. If you do not engage an expert representative, you are deemed by law to be expert enough to oversee all matters of importance. The NVM conditions apply.

??????? ???????? : NL23185444 - 1018 AD Amsterdam

??? ??? ??? ???????????

- Ground floor: beautiful central hall with staircase and elevator, there is also a private storage room. - First floor: hall, separate toilet and a storage room with washing machine connection, spacious living room with a view on trees and water from the singel, modern open kitchen (equipped with all necessary built-in appliances), side room where the dining room is currently located, the master bedroom is exceptionally large and equipped with a spacious walk-in closet, spacious bathroom with Whirlpool bath, separate shower and double sink, second bedroom / study, loggia with beautiful view over Artis.

??????? ???????? : NL23185444 - 1018 AD Amsterdam

????? ????????????

Particularities: - Green and quiet environment, yet located in the Center. - Very attractive house in the beautiful Aquartis building. - Well insulated, energy label A+ - Ground lease (erfpacht) bought off until 2049. - The owner has already requested for the everlasting ground lease. This information has been carefully compiled by us. However, no liability is accepted for any incompleteness, inaccuracy or otherwise, or the consequences thereof. All dimensions and surface areas given are indicative only. Buyer has its own duty to investigate all matters of importance to it. With regard to this property the real estate agent is advisor to the seller. We advise you to use an expert (NVM) real estate agent to guide you through the purchase process. If you have specific wishes regarding the house, we advise you to make these known to your buying broker in good time and to do your own research on this matter. If you do not engage an expert representative, you are deemed by law to be expert enough to oversee all matters of importance. The NVM conditions apply.

???????? ??????????: NL23185444 - 1018 AD Amsterdam

?????????????? ?????????????????

??? ??????????????? ??????????????, ??????????????? ?? ??? ?????????? ??????????????? ???:

Joan Dik, Marie Christine Lodewijk & Elisabeth van Zijverden

De Lairesestraat 51 ???????????

E-Mail: info@von-poll.nl

To Disclaimer of von Poll Immobilien GmbH

www.von-poll.com