

Corfu

Euterpe

CODE DU BIEN: 2377981



PRIX D'ACHAT: 1.975.000 EUR • SURFACE HABITABLE: ca. 450 m² • PIÈCES: 6 • SUPERFICIE DU TERRAIN : 4.350 m²

CODE DU BIEN: 2377981 - 491 00 Corfu

- En un coup d'œil**
- La propriété**
- Une première impression**
- Contact**

CODE DU BIEN: 2377981 - 491 00 Corfu

En un coup d'œil

CODE DU BIEN	2377981	Prix d'achat	1.975.000 EUR
Surface habitable	ca. 450 m²		
Pièces	6		
Salles de bains	7		
Année de construction	2022		

CODE DU BIEN: 2377981 - 491 00 Corfu

La propriété



CODE DU BIEN: 2377981 - 491 00 Corfu

La propriété



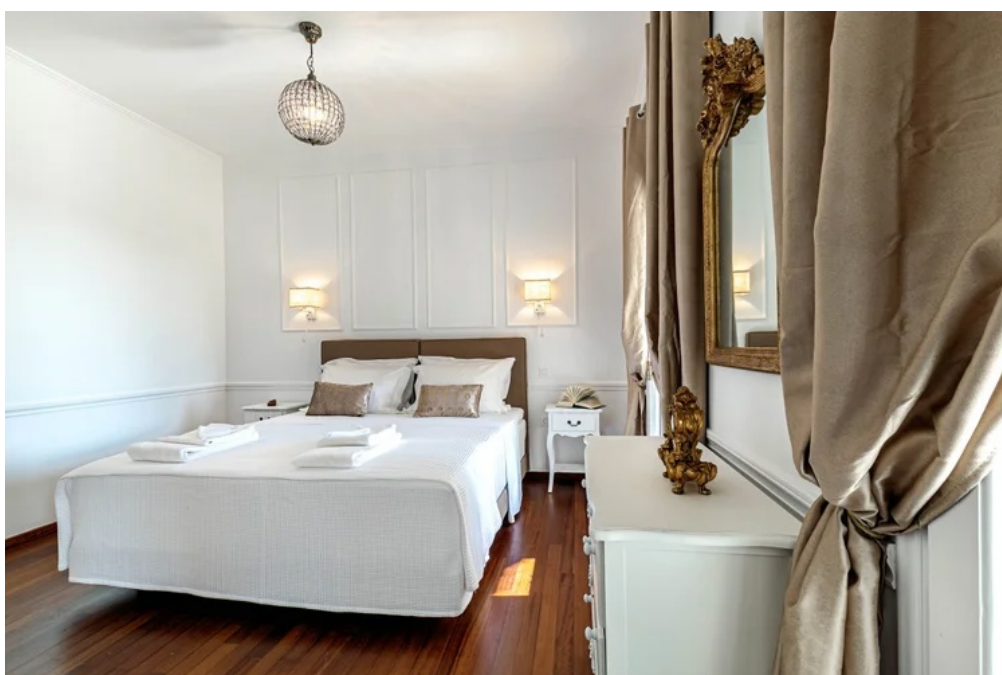
CODE DU BIEN: 2377981 - 491 00 Corfu

La propriété



CODE DU BIEN: 2377981 - 491 00 Corfu

La propriété



CODE DU BIEN: 2377981 - 491 00 Corfu

La propriété



CODE DU BIEN: 2377981 - 491 00 Corfu

La propriété



CODE DU BIEN: 2377981 - 491 00 Corfu

La propriété



CODE DU BIEN: 2377981 - 491 00 Corfu

La propriété



CODE DU BIEN: 2377981 - 491 00 Corfu

Une première impression

Euterpe. Mediterranean elegance. Ionian prestige. A villa to own forever.

Euterpe is a residence with a distinctive identity, where Corfiot architectural heritage meets a contemporary interpretation of luxury living, set within a landscape of rare natural beauty. Amphitheatrically positioned on the quiet hills of Gouvia, the villa opens onto the Ionian Sea and the horizon of the mainland coastline, creating a profound sense of serenity and privacy. Spread across three levels, the property is defined by both imposing and luminous spaces, with extensive glass surfaces that seamlessly integrate the surrounding landscape into everyday living, and an impressive central staircase that serves as the architectural axis of the home. The reception and entertaining areas exude understated luxury, while the fully equipped kitchen, six en-suite bedrooms, home cinema, gym, and advanced technological infrastructure collectively create a living experience designed for uncompromising comfort. Outside, the landscaped Mediterranean gardens with cypress trees, olive groves, and stone pathways frame the large swimming pool, terraces, and covered BBQ area beneath a vine-draped pergola, evoking the atmosphere of a private retreat with an authentic Ionian character. Just a short distance from Gouvia Marina and Corfu Town, Euterpe is not merely a luxury residence, but a refined way of living that balances aesthetics, nature, and effortless elegance.

Corfu is one of the Mediterranean's most refined destinations, blending aristocratic heritage, natural beauty, and world-class hospitality. Its lush landscapes, secluded turquoise coves, and elegant Venetian architecture create an atmosphere of timeless sophistication. The island offers a unique lifestyle where tranquility meets cosmopolitan charm, attracting discerning visitors and international property investors alike. From stunning seafront villas to exclusive residences surrounded by nature, Corfu represents the essence of understated luxury and exceptional living.

Von Poll Greece offers a full spectrum of services to support clients throughout the property purchase process in Greece. Beyond our real estate expertise, we collaborate with a trusted network of professionals — including legal advisors, notaries, tax consultants, and architects — to ensure every stage of the transaction is handled smoothly and securely. We guide buyers step-by-step through the entire process of acquiring property in Greece, from the initial search and due diligence to contract signing, taxation matters, and final handover. Our goal is to provide a transparent, efficient, and fully supported experience for both international and local clients alike.

CODE DU BIEN: 2377981 - 491 00 Corfu

Contact

Pour de plus amples informations, veuillez contacter votre personne de contact :

VON POLL REAL ESTATE Athens

Patriarchou Ioakim 19, 10675 Athina

Tel.: +30 21 06 14 87 77

E-Mail: salesgreece@von-poll.com

Vers la clause de non-responsabilité de von Poll Immobilien GmbH

www.von-poll.com