

Corfu

Loryn

CODE DU BIEN: 2359838



PRIX D'ACHAT: 2.300.000 EUR • SURFACE HABITABLE: ca. 255 m² • PIÈCES: 5 • SUPERFICIE DU TERRAIN : 4.150 m²

CODE DU BIEN: 2359838 - 49083 Corfu

- **En un coup d'œil**
- **La propriété**
- **Une première impression**
- **Contact**

CODE DU BIEN: 2359838 - 49083 Corfu

En un coup d'œil

CODE DU BIEN	2359838	Prix d'achat	2.300.000 EUR
Surface habitable	ca. 255 m²		
Pièces	5		
Chambres à coucher	5		
Salles de bains	5		
Année de construction	2020		

CODE DU BIEN: 2359838 - 49083 Corfu

La propriété



CODE DU BIEN: 2359838 - 49083 Corfu

La propriété



CODE DU BIEN: 2359838 - 49083 Corfu

La propriété



CODE DU BIEN: 2359838 - 49083 Corfu

La propriété



CODE DU BIEN: 2359838 - 49083 Corfu

La propriété



CODE DU BIEN: 2359838 - 49083 Corfu

La propriété



CODE DU BIEN: 2359838 - 49083 Corfu

La propriété



CODE DU BIEN: 2359838 - 49083 Corfu

La propriété



CODE DU BIEN: 2359838 - 49083 Corfu

La propriété



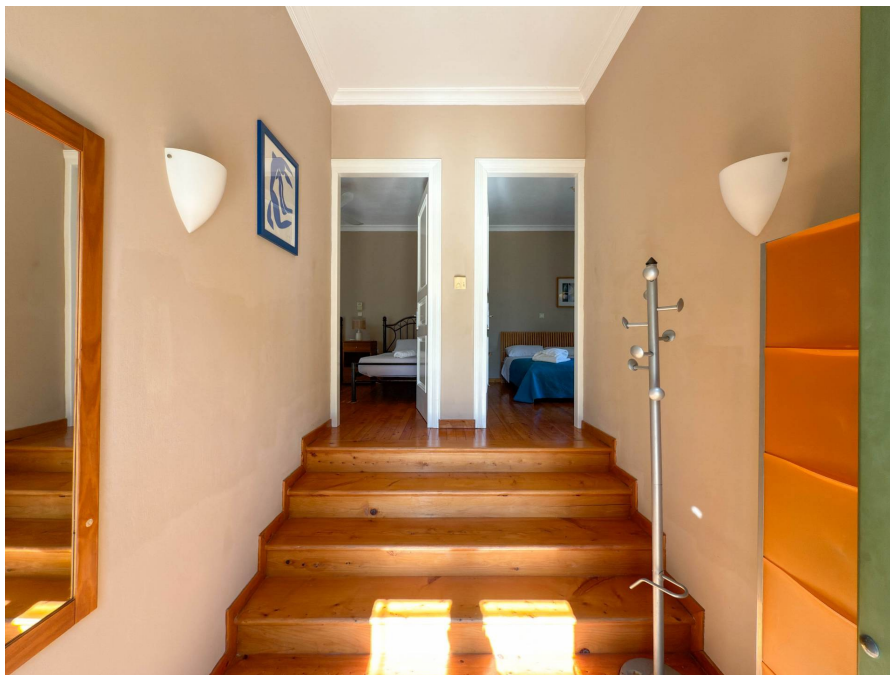
CODE DU BIEN: 2359838 - 49083 Corfu

La propriété



CODE DU BIEN: 2359838 - 49083 Corfu

La propriété



CODE DU BIEN: 2359838 - 49083 Corfu

La propriété



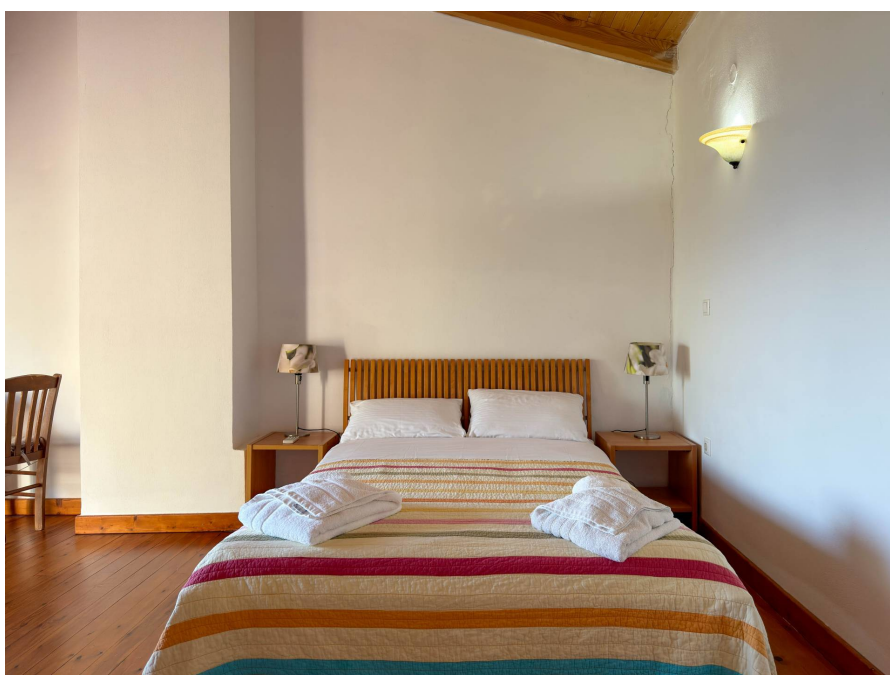
CODE DU BIEN: 2359838 - 49083 Corfu

La propriété



CODE DU BIEN: 2359838 - 49083 Corfu

La propriété



CODE DU BIEN: 2359838 - 49083 Corfu

La propriété



CODE DU BIEN: 2359838 - 49083 Corfu

La propriété



CODE DU BIEN: 2359838 - 49083 Corfu

La propriété



CODE DU BIEN: 2359838 - 49083 Corfu

La propriété



CODE DU BIEN: 2359838 - 49083 Corfu

La propriété



CODE DU BIEN: 2359838 - 49083 Corfu

La propriété



CODE DU BIEN: 2359838 - 49083 Corfu

Une première impression

Loryn is a rare and captivating retreat, gracefully set on a headland above the shimmering waters of Kalami Bay, where panoramic, dual-aspect views unfold effortlessly, from the tranquil bay of Kalami to the picturesque coastline of Kouloura Harbour.

Nestled in one of the most coveted corners of northeast Corfu, and within an easy stroll of both charming harbors and village life, Loryn offers the perfect balance of privacy, beauty, and connection to the sea. Surrounded by mature Mediterranean gardens, where ancient olive trees cast soft shade and fragrant pathways lead you gently through the grounds, the property reveals itself as a collection of three independent residences, thoughtfully designed to offer both togetherness and complete privacy. A stone-paved path guides you to the main house and its two elegant guest annexes, each positioned to capture the ever-changing light and breathtaking sea views.

The main villa welcomes you into a bright, airy living space where indoor and outdoor living become one. A spacious sitting and dining area opens onto a sea-facing terrace, inviting the horizon into your everyday life, while the fully equipped kitchen flows seamlessly to a shaded pergola and BBQ area, perfect for long, leisurely meals under the open sky. Two serene double bedrooms on this level open onto terraces and gardens, offering peaceful corners to unwind, while a charming conservatory brings the outside in with quiet elegance. Just steps away, the first guest annex offers two beautifully appointed en-suite bedrooms, each with its own private outdoor space, ideal for hosting family or friends with comfort and independence. The second annex provides a more intimate retreat, a self-contained suite with open-plan living, its own balcony, and captivating sea views, perfect for couples seeking privacy within this enchanting estate.

At the heart of Loryn, outdoor living takes centre stage. A stunning infinity pool seems to melt into the blue of the bay, surrounded by sun-drenched terraces, shaded lounges, and lush planting. Multiple seating areas and a pergola-covered dining space create a setting where days drift effortlessly into evenings, and every moment is framed by the beauty of the Ionian Sea.

Perfectly positioned between Kalami and Kouloura, the villa offers immediate access to crystal-clear waters, waterfront tavernas, and a lifestyle defined by simplicity and understated elegance. The twin bays of Kalami Bay and Kouloura Harbour are among the most enchanting and exclusive settings on the northeast coast of Corfu. Surrounded by emerald hills, crystal-clear turquoise waters, and timeless olive groves, the area offers a lifestyle of understated elegance and tranquility, where days are spent swimming in secluded

coves, arriving by boat to waterfront tavernas, and enjoying slow evenings beneath the glow of the Ionian sunset.

Von Poll Greece provides full support throughout the property purchase process. Beyond real estate expertise, we work with a trusted network of legal advisors, notaries, tax consultants, and architects, guiding buyers step-by-step from initial search to final handover, ensuring a smooth and secure experience.

CODE DU BIEN: 2359838 - 49083 Corfu

Contact

Pour de plus amples informations, veuillez contacter votre personne de contact :

VON POLL REAL ESTATE Athens

Patriarchou Ioakim 19, 10675 Athína

Tel.: +30 21 06 14 87 77

E-Mail: salesgreece@von-poll.com

Vers la clause de non-responsabilité de von Poll Immobilien GmbH

www.von-poll.com