

Rethimno

# Verenza

**CODE DU BIEN: 2157290**



**PRIX D'ACHAT: 3.800.000 EUR • SURFACE HABITABLE: ca. 510 m<sup>2</sup> • PIÈCES: 6 • SUPERFICIE DU TERRAIN : 4.007 m<sup>2</sup>**

**CODE DU BIEN: 2157290 - 741 50 Rethimno**

- En un coup d'œil
- La propriété
- Une première impression
- Contact

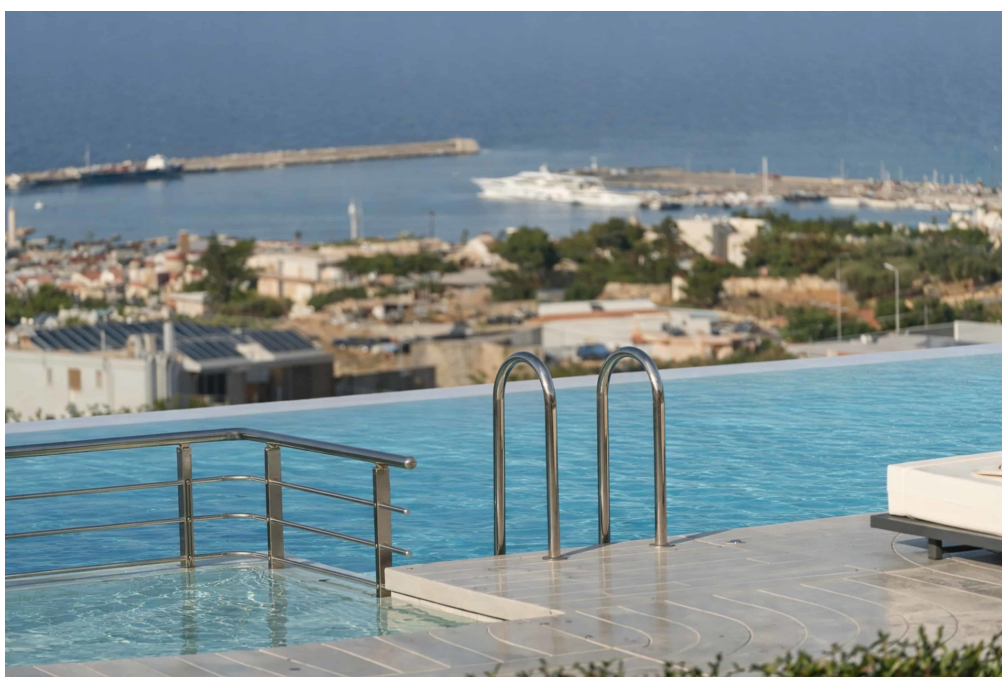
**CODE DU BIEN: 2157290 - 741 50 Rethimno**

## En un coup d'œil

CODE DU BIEN	2157290	Prix d'achat	3.800.000 EUR
Surface habitable	ca. 510 m <sup>2</sup>		
Pièces	6		
Salles de bains	6		
Année de construction	2024		

CODE DU BIEN: 2157290 - 741 50 Rethimno

## La propriété



CODE DU BIEN: 2157290 - 741 50 Rethimno

## La propriété



CODE DU BIEN: 2157290 - 741 50 Rethimno

## La propriété



CODE DU BIEN: 2157290 - 741 50 Rethimno

## La propriété



CODE DU BIEN: 2157290 - 741 50 Rethimno

## La propriété



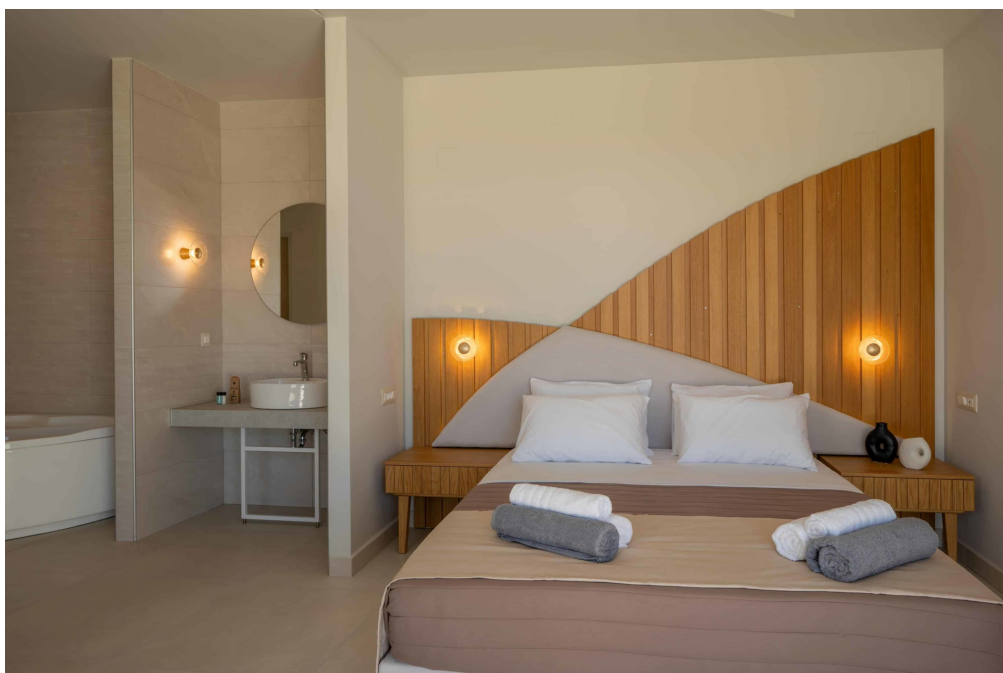
CODE DU BIEN: 2157290 - 741 50 Rethimno

## La propriété



CODE DU BIEN: 2157290 - 741 50 Rethimno

## La propriété



CODE DU BIEN: 2157290 - 741 50 Rethimno

## La propriété



CODE DU BIEN: 2157290 - 741 50 Rethimno

## La propriété



CODE DU BIEN: 2157290 - 741 50 Rethimno

## La propriété



CODE DU BIEN: 2157290 - 741 50 Rethimno

## La propriété



CODE DU BIEN: 2157290 - 741 50 Rethimno

## La propriété



CODE DU BIEN: 2157290 - 741 50 Rethimno

## La propriété



CODE DU BIEN: 2157290 - 741 50 Rethimno

## La propriété



CODE DU BIEN: 2157290 - 741 50 Rethimno

## La propriété



**CODE DU BIEN: 2157290 - 741 50 Rethimno**

## Une première impression

Wake each morning to the endless blue of the Aegean stretching before you, and spend your evenings watching the sky shift as the light softens across the sea and the city below — all from the privacy of your own hillside estate. At Villa Verenza, every moment is framed by light, space, and panoramic beauty — a residence designed not simply to be lived in, but to be experienced.

Set on a private 4,000 m<sup>2</sup> plot above Rethymno, this exceptional 510 m<sup>2</sup> villa enjoys an elevated position that captures sweeping sea views, the town below, and the iconic Fortezza Castle. Contemporary architecture, clean lines, and carefully landscaped grounds come together to create a refined Mediterranean retreat just minutes from the city center and beaches.

The villa unfolds across three levels, all crafted to maximize openness, natural light, and seamless connection between interior and exterior spaces.

The main living level welcomes you into an expansive open-plan living and dining area, where floor-to-ceiling glass draws the horizon directly into the home. A fully equipped designer kitchen anchors the space, ideal for both everyday living and elegant entertaining. Three beautifully appointed en-suite bedrooms are located on this level, each offering privacy, comfort, and refined finishes. One suite features a hydromassage bathtub, adding an extra layer of indulgence.

The lower level opens directly onto the pool terrace and hosts two additional en-suite bedrooms, along with a second lounge/media area and a guest WC. This floor is perfectly suited for hosting guests while maintaining a sense of independence and privacy.

Occupying the upper level, the master suite is a private sanctuary of its own. A

spacious bedroom, en-suite bathroom, and an intimate jacuzzi for two are complemented by a large private terrace, offering commanding views over the sea, the old town, and the castle — an unforgettable setting from sunrise to sunset.

Outdoors, Villa Verenza becomes a true resort-style retreat. The impressive 80 m<sup>2</sup> swimming pool forms the centerpiece of the estate, accompanied by a separate children's pool, expansive sun terraces, shaded lounges, and manicured lawns. A fully equipped outdoor kitchen and BBQ area, complete with dining space and outdoor TV, create the perfect environment for al fresco living and entertaining. Every corner of the property has been thoughtfully designed to offer privacy, comfort, and visual harmony with the surrounding landscape. Palm trees, sculpted planting, and softly illuminated pathways enhance the sense of calm and exclusivity.

Additional features include private parking for up to six vehicles, full air-conditioning throughout, high-quality construction, and the villa being sold fully furnished and equipped — ready for immediate enjoyment.

A remaining portion of the estate's generous plot offers a blank canvas—perfectly sized for a private tennis court or tailored to suit the future owner's personal vision, whether for recreation, landscaping, or an additional leisure feature.

Located in the peaceful enclave of Tria Monastiria, just 3 km from Rethymno's vibrant center and its beaches, Villa Verenza offers the rare combination of tranquility, accessibility, and commanding views.

Whether envisioned as a prestigious private residence or a high-performing luxury rental investment, Villa Verenza represents a compelling opportunity to own an exceptional home in one of Crete's most desirable destinations.

Von Poll Greece offers a full spectrum of services to support clients throughout the property purchase process in Greece. Beyond our core real estate expertise, we collaborate with a trusted network of professionals—including legal advisors, notaries, tax consultants, and architects—to ensure every stage of the transaction is handled smoothly and securely.

We guide buyers step-by-step through the entire process of acquiring property in Greece, from the initial search and due diligence to contract signing, taxation matters, and final handover. Our goal is to provide a transparent, efficient, and fully

supported experience for international and local clients alike.

**CODE DU BIEN: 2157290 - 741 50 Rethimno**

## Contact

Pour de plus amples informations, veuillez contacter votre personne de contact :

VON POLL REAL ESTATE Athens

---

Patriarchou Ioakim 19, 10675 Athina

Tel.: +30 21 06 14 87 77

E-Mail: [salesgreece@von-poll.com](mailto:salesgreece@von-poll.com)

*Vers la clause de non-responsabilité de von Poll Immobilien GmbH*

---

[www.von-poll.com](http://www.von-poll.com)