

Berlin - Pankow

Elegant penthouse near Prenzlauer Berg: 4-room maisonette top floor with great south-facing views

Property ID: 23071080m



www.von-poll.com

RENT PRICE: 2.990 EUR • LIVING SPACE: ca. 147,07 m² • ROOMS: 4

Property ID: 23071080m - 13189 Berlin - Pankow

- At a glance**
- The property**
- Energy Data**
- Floor plans**
- A first impression**
- Details of amenities**
- All about the location**
- Other information**
- Contact partner**

Property ID: 23071080m - 13189 Berlin - Pankow

At a glance

Property ID	23071080m	Rent price	2.990 EUR
Living Space	ca. 147,07 m ²	Additional costs	523 EUR
Floor	5	Type	Penthouse
Rooms	4	Condition of property	Like new
Bedrooms	3	Construction method	Solid
Bathrooms	2	Equipment	Guest WC, Built-in kitchen, Balcony
Year of construction	2023		
Type of parking	1 x Underground car park, 100 EUR (Rent)		

Property ID: 23071080m - 13189 Berlin - Pankow

Energy Data

Type of heating	Underfloor heating	Energy Certificate	Energy demand certificate
Energy Source	Air-to-water heat pump	Final Energy Demand	25.00 kWh/m²a
Energy certificate valid until	23.11.2033	Energy efficiency class	A+
Power Source	Air-to-water heat pump	Year of construction according to energy certificate	2023

Property ID: 23071080m - 13189 Berlin - Pankow

The property



Property ID: 23071080m - 13189 Berlin - Pankow

The property



Property ID: 23071080m - 13189 Berlin - Pankow

The property



Property ID: 23071080m - 13189 Berlin - Pankow

The property



Capital
MÄKLER-KOMPASS
Top-Makler Berlin
★★★★★
Höchste Note für
von Poll Immobilien
Pankow

BELLEVUE
Best Property
Agents
2024

VON POLL
IMMOBILIEN

Professionelle Immobilienbewertung
kostenfrei und unverbindlich

- ✓ Kompetente Wertermittlung vor Ort
- ✓ Zahlreiche registrierte und solvente Kaufinteressenten
- ✓ Aus Ihrer Region empfehlen uns unsere Kunden

Kundenbewertung
★★★★★ **4,9**

Shop Berlin - Pankow | Florastraße 1 | 13187 Berlin | T.: 030 - 20 14 371 0 | pankow@von-poll.com

Property ID: 23071080m - 13189 Berlin - Pankow

The property



Property ID: 23071080m - 13189 Berlin - Pankow

The property



Property ID: 23071080m - 13189 Berlin - Pankow

The property



Property ID: 23071080m - 13189 Berlin - Pankow

The property



FÜR SIE IN DEN BETSEN LAGEN



Definieren **Sie** Ihr Traumzuhaus – legen Sie Ihr Suchprofil bei
VON POLL IMMOBILIEN an und lassen Sie Ihre Wohnträume Wirklichkeit werden.

Pankow | Florastraße 1 | 13187 Berlin | pankow@von-poll.com
Prenzlauerberg | Prenzlauer Allee 52 | 10405 Berlin | 030 - 20 14 37 10

Property ID: 23071080m - 13189 Berlin - Pankow

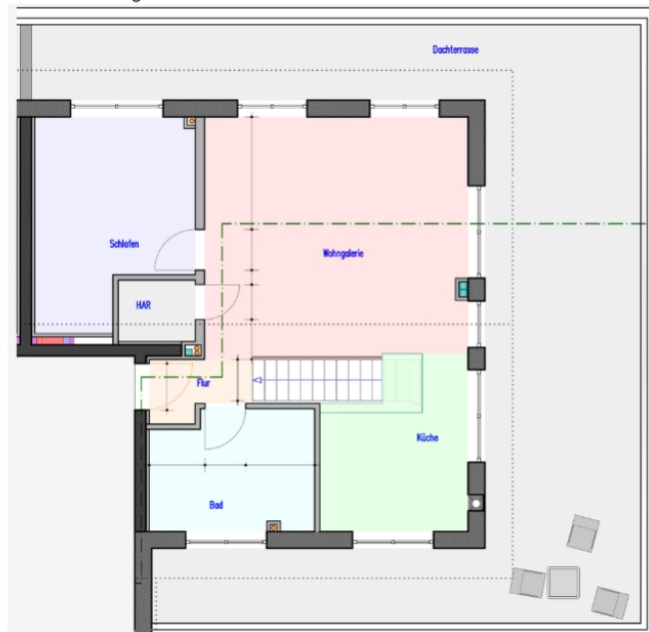
Floor plans

Anlage zum Mietvertrag Aufteilung der Wohnung Nr. 16

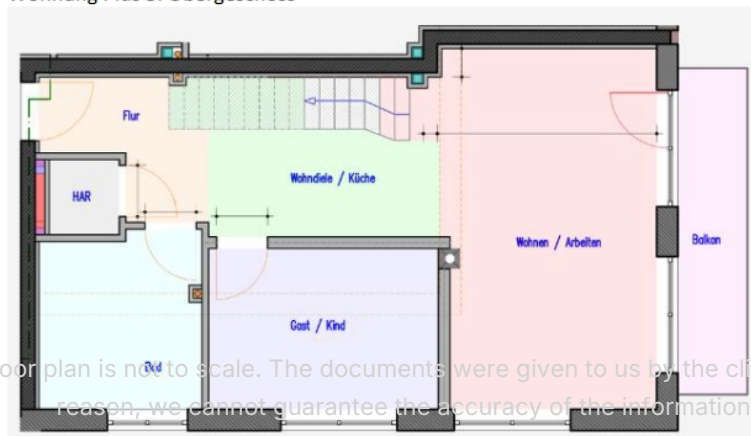
(Wohnfläche 147,07 qm, aufgeteilt in 127,67 qm + 25 % der Terrassenflächen im Penthouse + 50 % der Balkonflächen in der WohnungPlus im 3. OG)

Vorbehaltlich geringfügiger Änderungen in der Ausführung

Penthouse Dachgeschoss



Wohnung Plus 3. Obergeschoss



This floor plan is not to scale. The documents were given to us by the client. For this reason, we cannot guarantee the accuracy of the information.

Property ID: 23071080m - 13189 Berlin - Pankow

A first impression

Note: Please note that the property is rented unfurnished and for an indefinite period.

This exclusive top-floor apartment impresses with approx. 147.07 m² of living space, offering maximum living comfort and a breathtaking view. The building was completed in 2023 and offers amenities such as an elevator, practical cellar compartments and an underground car park.

The apartment is spread over two floors and comprises a total of four rooms and two luxurious bathrooms. One of the four living rooms can optionally be divided to create an additional fifth room. Both bathrooms are equipped with floor-to-ceiling showers, with the upper bathroom also offering a bathtub.

The spacious south-facing outdoor areas are particularly noteworthy: An impressive roof terrace of approx. 72 m², 18 m² of which is integrated into the living space, invites you to relax and enjoy the view. There is also a stylish balcony measuring 6.80 m², of which 3.40 m² is included in the living space. The balcony is rounded off by an elegant stainless steel and glass railing.

The apartment boasts numerous high-quality features, including a new, modern fitted kitchen with high-quality materials and appliances. Exclusive tiled floors, air conditioning for a pleasant indoor climate, large floor-to-ceiling windows that provide plenty of natural light and a stylish internal staircase. The underfloor heating can be individually controlled in each room to ensure maximum comfort, and electric blinds provide optimum sun protection. There is also an outside water connection and power connections for a sauna or hot tub, for example.

The property is designed to be barrier-free and suitable for senior citizens. Thanks to the ramp at the entrance, the elevator and the ground-level floors in the apartment, all rooms are easily and conveniently accessible. Additional convenience is provided by a storage room in the apartment and a separate cellar compartment, which offers practical storage space.

The penthouse apartment impresses with its versatile usage options. Thanks to the clever layout on two floors, it is ideal for multi-generational living or a combination of living and working. Each floor can be used as an independent living unit, making the property perfect for multi-generational families. The upper floor serves as a private retreat for younger family members, while the lower floor offers older generations a comfortable and barrier-free home.

Alternatively, the lower floor can be used as a prestigious office space, creating a professional working environment. The upper floor remains a quiet and secluded living area - ideal for people who want to combine living and working under one roof. This flexible usage option gives the apartment a special appeal.

Come and see this exceptional property for yourself and be inspired by the high-quality fittings, the well thought-out room concepts and the flexible usage options. Arrange a viewing today and experience the unique feeling of living that this top-floor apartment has to offer in a perfect combination of comfort, elegance and functionality.

Property ID: 23071080m - 13189 Berlin - Pankow

Details of amenities

- **Maisonette apartment with exceptional living comfort and spectacular views**
- **Barrier-free and elderly-friendly (ramp in the entrance area, elevator and level access)**
- **elevator connecting basement/underground garage and residential floors**
- **a spacious south-facing roof terrace with an area of 72m² (18m² counted as living space) and a stainless steel glass railing**
- **an additional south-facing balcony with an area of 6.80m² (3.40m² counted towards living space) and a stainless steel glass railing**
- **Outside water connection and power connection on the rooftop terrace for e.g. sauna or whirlpool**
- **Two fully equipped daylight bathrooms (downstairs: large walk-in shower; upstairs: large walk-in shower and bathtub)**
- **High-quality stone tiled flooring throughout the apartment**
- **Air conditioning for a pleasant room climate**
- **Large floor-to-ceiling windows for maximum sunlight**
- **electric blinds on all windows**
- **modern indoor staircase**
- **Underfloor heating in every room with separate thermostats**
- **Storage room in the apartment and separate cellar compartment**

Property ID: 23071080m - 13189 Berlin - Pankow

All about the location

Just 3 km from the popular Kollwitzplatz, the Licht Terrassen are located in the southern part of the Pankow district, in the lively Neumannkiez. This district borders on Weißensee and Prenzlauer Berg and is characterized by its quiet, green residential area. The area consists mainly of residential buildings built in the 1960s and offers a relaxed environment with tree-lined residential streets.

Everything for daily needs is within easy walking distance: The Neumann Forum is just 350 meters away, about a 5-minute walk. Here, numerous retail stores, restaurants and cafés invite you to stroll and linger, which makes the proximity to urban infrastructure particularly attractive.

The public transport connections are excellent. The subway station Vinetastraße (U2), the most important north-south connection, is only 850 meters away and can be easily reached in one bus stop with the 250 bus. From here, there are also connections to the M1 and 50 streetcars, while the 255 bus in the direction of Prenzlauer Allee and the M2 streetcar provide fast connections to other parts of the city. The location is ideal for flexible mobility, and Kollwitzplatz with its numerous cafés and restaurants in the trendy Prenzlauer Berg district can be reached by bike in just 11 minutes.

The residential environment is particularly appealing for families: kindergartens and schools are in the immediate vicinity, and the cinema in the Brotfabrik offers a cultural highlight that underlines the family-friendly charm of Berlin's northern district. Here you will experience a harmonious mix of urban life and a relaxed neighborhood.

Property ID: 23071080m - 13189 Berlin - Pankow

Other information

Es liegt ein Energiebedarfsausweis vor.

Dieser ist gültig bis 23.11.2033.

Endenergiebedarf beträgt 25.00 kwh/(m²*a).

Wesentlicher Energieträger der Heizung ist Luft/wasser Wärmepumpe.

Das Baujahr des Objekts lt. Energieausweis ist 2023.

Die Energieeffizienzklasse ist A+.

LIABILITY: We would like to point out that the property information, documents, plans etc. provided by us originate from the seller or landlord. We therefore accept no liability for the accuracy or completeness of the information. It is therefore the responsibility of our customers to check the correctness of the property information and details contained therein. All real estate offers are non-binding and subject to errors, prior sale and rental or other interim utilization.

OUR SERVICE FOR YOU AS THE OWNER:

If you are planning to sell or let your property, it is important for you to know its market value. Have the current value of your property professionally assessed by one of our real estate specialists free of charge and without obligation. Our nationwide and international network enables us to bring sellers or landlords and interested parties together in the best possible way.

Property ID: 23071080m - 13189 Berlin - Pankow

Contact partner

For further information, please contact your contact person:

Ulf Sobeck

Prenzlauer Allee 52, 10405 Berlin
Tel.: +49 30 - 20 14 371 0
E-Mail: prenzlauer.berg@von-poll.com

To the Disclaimer of von Poll Immobilien GmbH

www.von-poll.com