

Sineu - Mitte

## Exclusive townhouse with pool in Sineu

*Property ID: ES263745833*



**PURCHASE PRICE: 1.490.000 EUR • LIVING SPACE: ca. 262 m<sup>2</sup> • ROOMS: 5 • LAND AREA: 339 m<sup>2</sup>**

**Property ID: ES263745833 - 07510 Sineu - Mitte**

- At a glance
- The property
- Floor plans
- A first impression
- Details of amenities
- All about the location
- Contact partner

Property ID: ES263745833 - 07510 Sineu - Mitte

## At a glance

Property ID	ES263745833	Purchase Price	1.490.000 EUR
Living Space	ca. 262 m <sup>2</sup>	Condition of property	Projected
Rooms	5	Equipment	Terrace, Swimming pool, Built-in kitchen
Bedrooms	4		
Bathrooms	4		
Year of construction	1920		
Type of parking	1 x Garage		

Property ID: ES263745833 - 07510 Sineu - Mitte

## The property



Property ID: ES263745833 - 07510 Sineu - Mitte

## The property



Property ID: ES263745833 - 07510 Sineu - Mitte

## The property



Property ID: ES263745833 - 07510 Sineu - Mitte

## The property



Property ID: ES263745833 - 07510 Sineu - Mitte

## The property



Property ID: ES263745833 - 07510 Sineu - Mitte

## The property



Property ID: ES263745833 - 07510 Sineu - Mitte

## The property



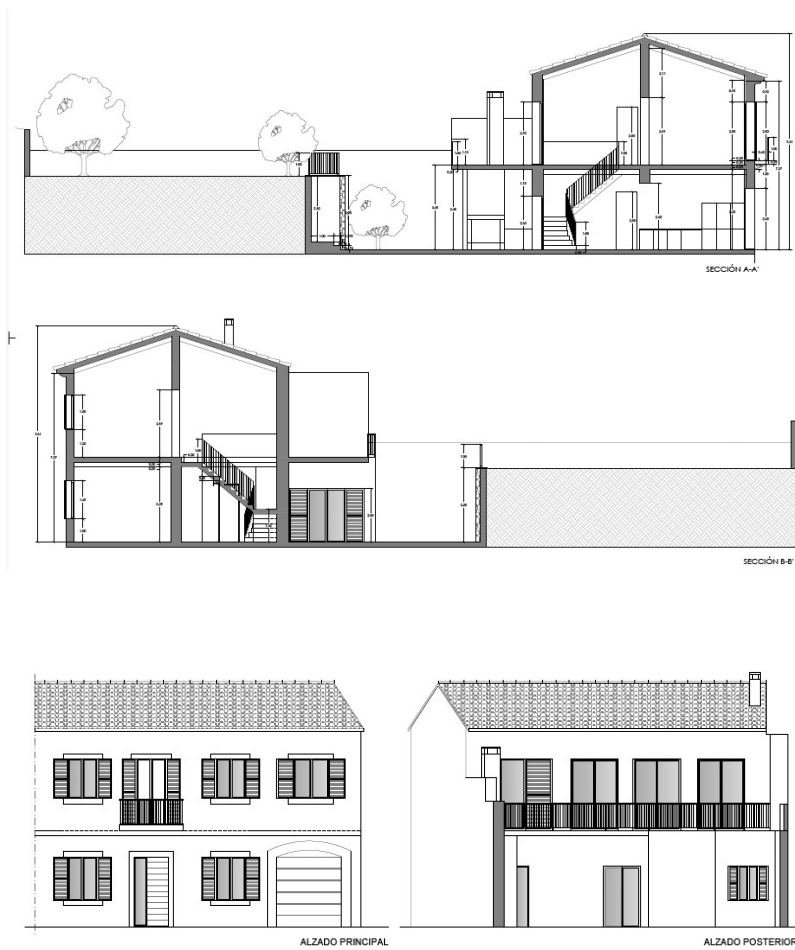
Property ID: ES263745833 - 07510 Sineu - Mitte

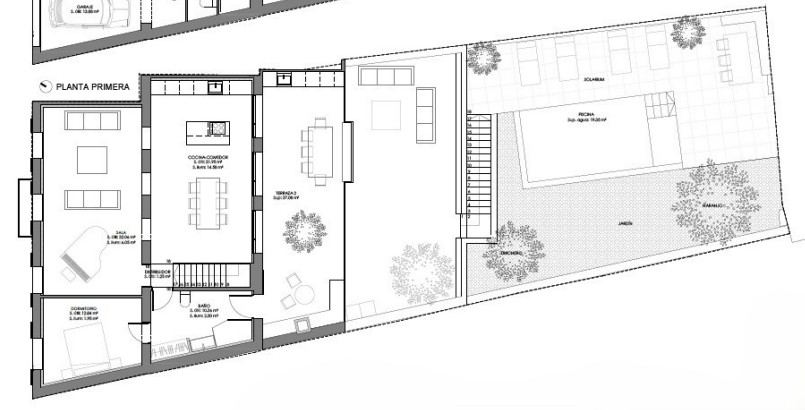
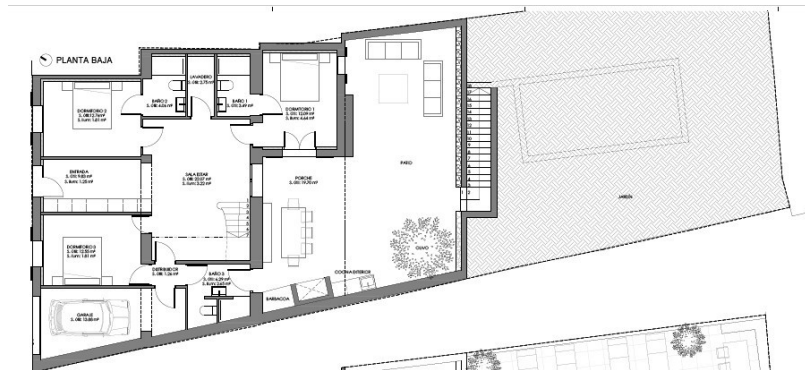
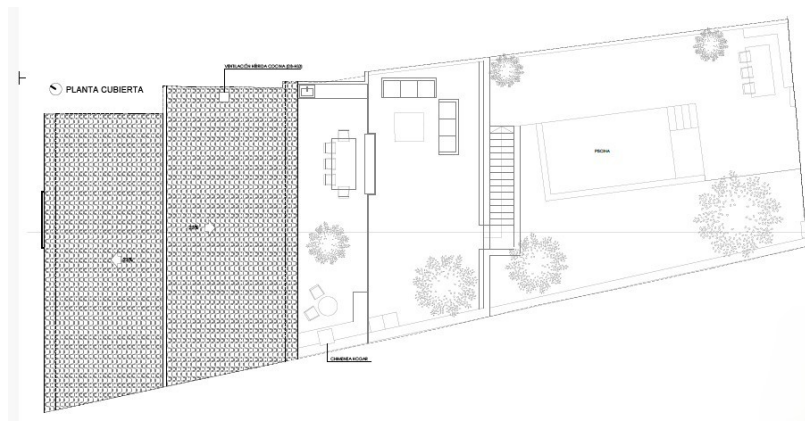
## The property



Property ID: ES263745833 - 07510 Sineu - Mitte

## Floor plans





This floor plan is not to scale. The documents were given to us by the client. For this reason, we cannot guarantee the accuracy of the information.

**Property ID: ES263745833 - 07510 Sineu - Mitte**

## A first impression

In the heart of the historic center of Sineu, this extraordinary village house presents itself as a stylish symbiosis of Mallorcan building tradition and modern architectural language. Located on the island of Mallorca, the property offers an elegant retreat for buyers with the highest standards of aesthetics, privacy and authenticity.

A constructed area of around 262 m<sup>2</sup> extends over a plot of approx. 340 m<sup>2</sup>, the architecture of which impresses with clear lines, high-quality materials and a well thought-out room concept. Generosity and living comfort are at the heart of every design.

At the heart of the house is the light-flooded living and dining area with a seamlessly integrated, purist designer kitchen. Open-plan and harmoniously proportioned, it creates an elegant living landscape that allows both prestigious receptions and relaxed everyday living at the highest level.

Four spacious bedrooms offer private retreats with modern sophistication and a cozy atmosphere. Fine materials, carefully selected details and a clear design language lend the rooms timeless elegance.

The space is complemented by four high-quality bathrooms, three of which are en suite. Stylish surfaces, precise lines and exclusive furnishings underline the luxurious character of the property.

A rare feature in the town center is the private garage with parking space for one vehicle - a valuable convenience factor that increases security and everyday practicality in equal measure.

The outdoor area showcases the Mediterranean lifestyle in a particularly charming way: A tastefully landscaped garden surrounds the private pool with around 19 m<sup>2</sup> of water. Lush planting ensures a high degree of privacy, while the covered terrace offers ideal conditions for relaxing hours and sociable evenings outdoors.

The property is connected to the public electricity grid and has a private cistern that is regularly filled by tanker.

An exceptional residence that combines traditional island architecture, contemporary design and modern living comfort to create a harmonious overall picture of the highest standard.

**Property ID: ES263745833 - 07510 Sineu - Mitte**

## Details of amenities

- Fitted kitchen
- Covered terrace
- Swimming pool of approx. 19 m<sup>2</sup>
- One parking space in the garage
- garden

**Property ID: ES263745833 - 07510 Sineu - Mitte**

## All about the location

Sineu, a village in the heart of Mallorca with around 4000 inhabitants, impresses with its authentic atmosphere and rich history. Nestled in the rolling hills of the island, Sineu exudes the charm of a traditional Mallorcan village that can trace its origins back to the Middle Ages. The impressive church of Santa Maria, a Gothic building from the 13th century, dominates the townscape. The Wednesday market is one of the oldest and most traditional markets on the island and offers local products, handicrafts and culinary specialties that will make every visitor's heart beat faster. Culturally, Sineu has a lot to offer, was once the seat of a royal palace and is now home to numerous historic buildings. The Convento de los Mínimos, dating from the 16th century, is now home to the town hall and the municipal museum of history and culture. The inhabitants of Sineu maintain their traditions and celebrate various festivals and events throughout the year. Particularly noteworthy are the Easter processions and the festival in honor of the patron saint Sant Marc, which takes place every year in April. The distance to Palma is around 40 km. The airport is also a similar distance away and makes for an uncomplicated journey. The central location of Sineu makes it an ideal starting point for excursions to the island's beaches and surrounding sights. At the same time, the village offers a peaceful retreat away from the hustle and bustle of the tourist resorts.

**Property ID: ES263745833 - 07510 Sineu - Mitte**

## Contact partner

For further information, please contact your contact person:

Florian Waetzoldt

---

Placa Hostals 11, 07320 Santa Maria del Camí

Tel.: +34 871 - 201 945

E-Mail: [santamaria@von-poll.com](mailto:santamaria@von-poll.com)

*To the Disclaimer of von Poll Immobilien GmbH*

---

[www.von-poll.com](http://www.von-poll.com)