

Establiments - Palma

Garden idyll in Establiments - detached house with guest area and garage

Property ID: ES263745797



PURCHASE PRICE: 737.000 EUR • LIVING SPACE: ca. 174 m² • ROOMS: 5 • LAND AREA: 847 m²

Property ID: ES263745797 - 07010 Establiments - Palma

- **At a glance**
- **The property**
- **A first impression**
- **Details of amenities**
- **All about the location**
- **Other information**
- **Contact partner**

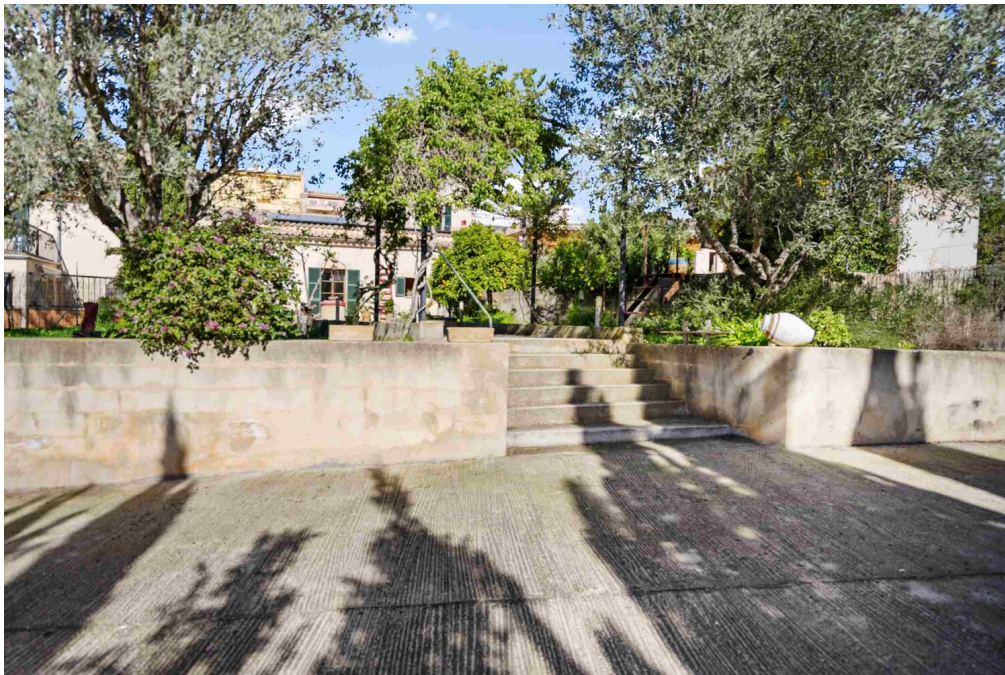
Property ID: ES263745797 - 07010 Establishments - Palma

At a glance

Property ID	ES263745797	Purchase Price	737.000 EUR
Living Space	ca. 174 m ²	Condition of property	Needs renovation
Rooms	5	Equipment	Terrace, Built-in kitchen
Bedrooms	4		
Bathrooms	2		
Year of construction	1887		

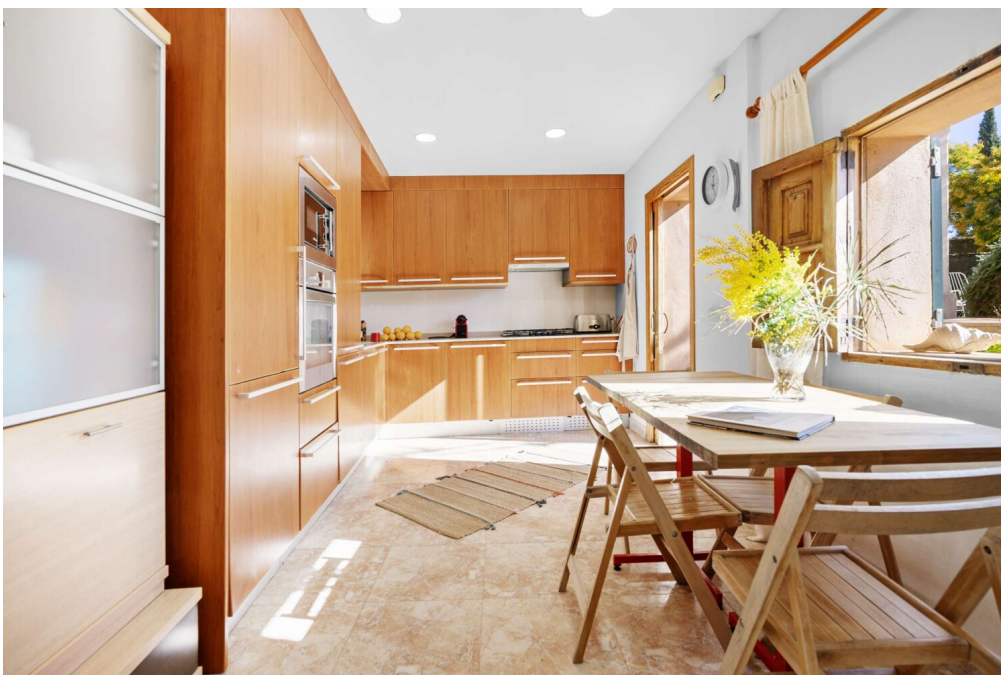
Property ID: ES263745797 - 07010 Establiments - Palma

The property



Property ID: ES263745797 - 07010 Establiments - Palma

The property



Property ID: ES263745797 - 07010 Establiments - Palma

The property



Property ID: ES263745797 - 07010 Establiments - Palma

The property



Property ID: ES263745797 - 07010 Establiments - Palma

The property



Property ID: ES263745797 - 07010 Establiments - Palma

The property



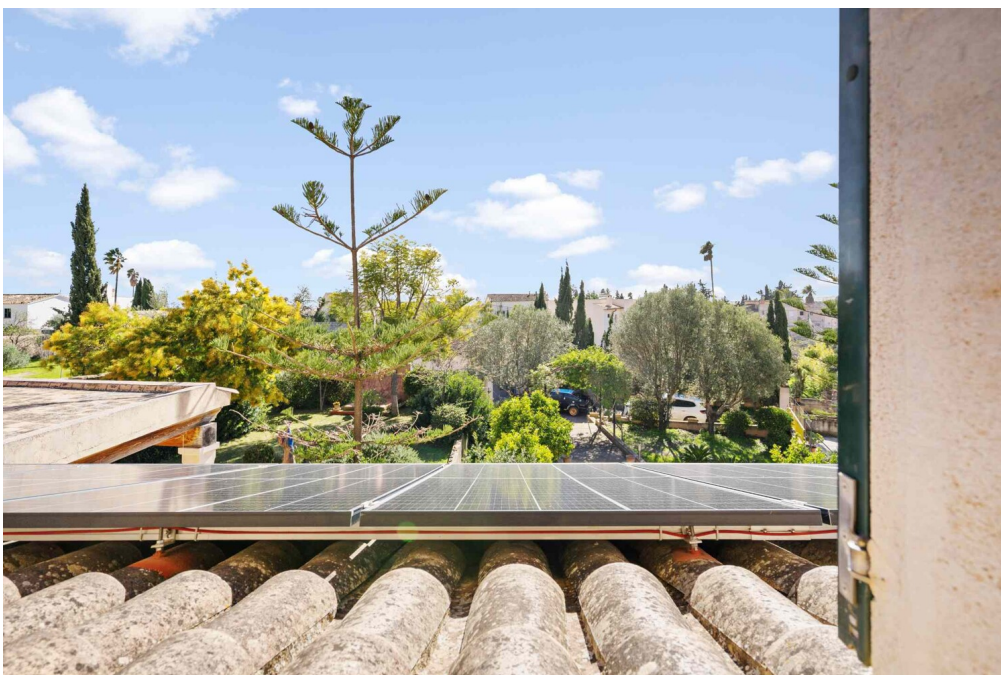
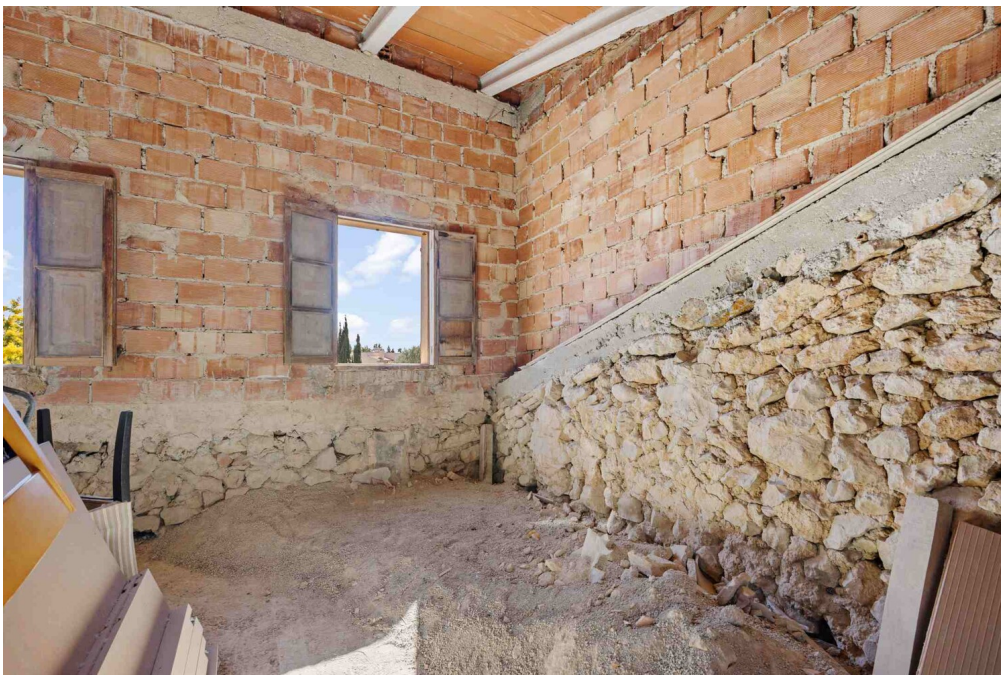
Property ID: ES263745797 - 07010 Establiments - Palma

The property



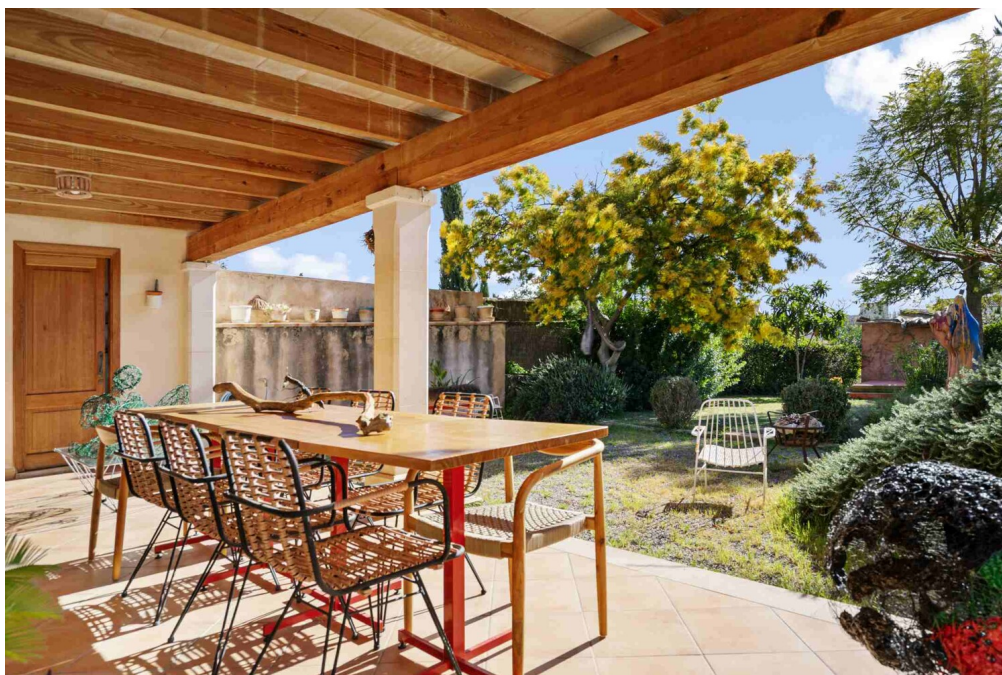
Property ID: ES263745797 - 07010 Establiments - Palma

The property



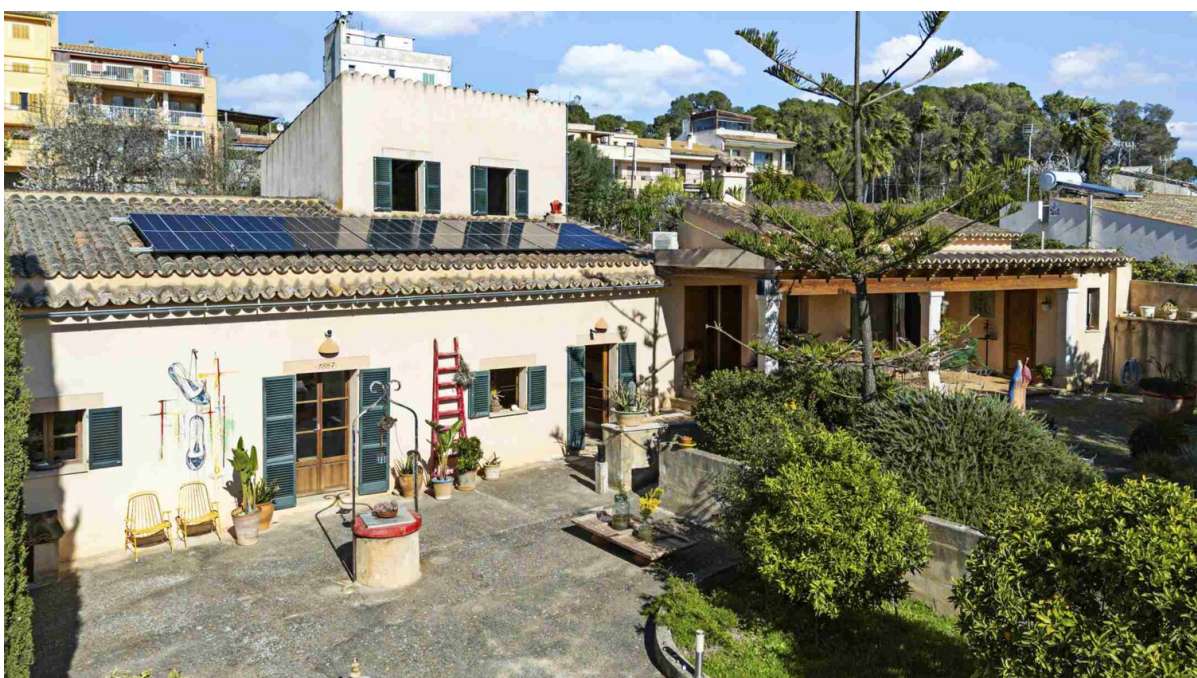
Property ID: ES263745797 - 07010 Establiments - Palma

The property



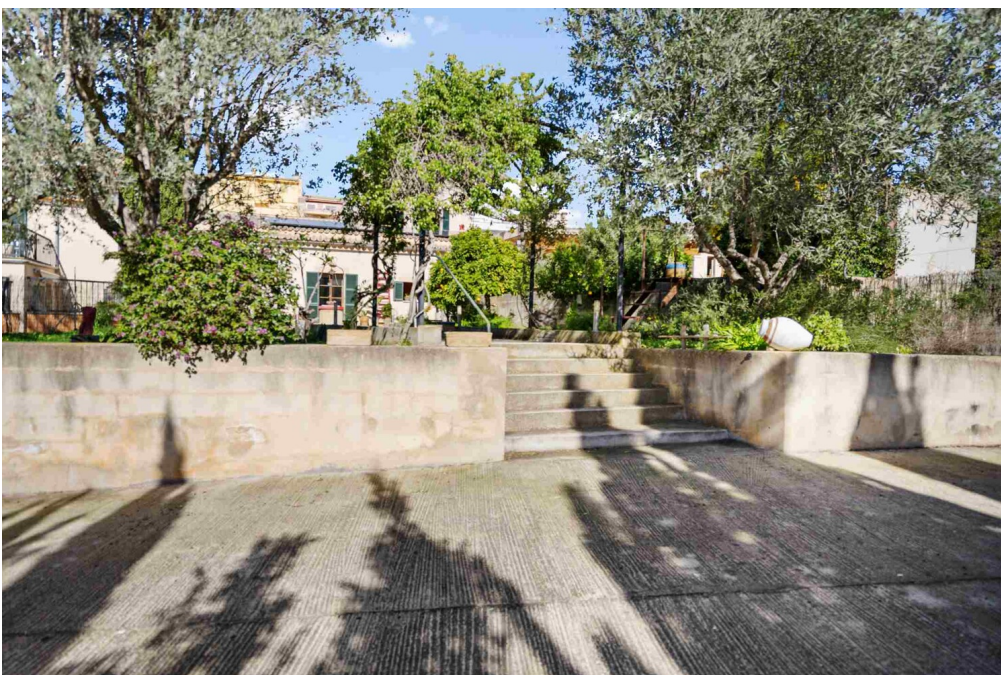
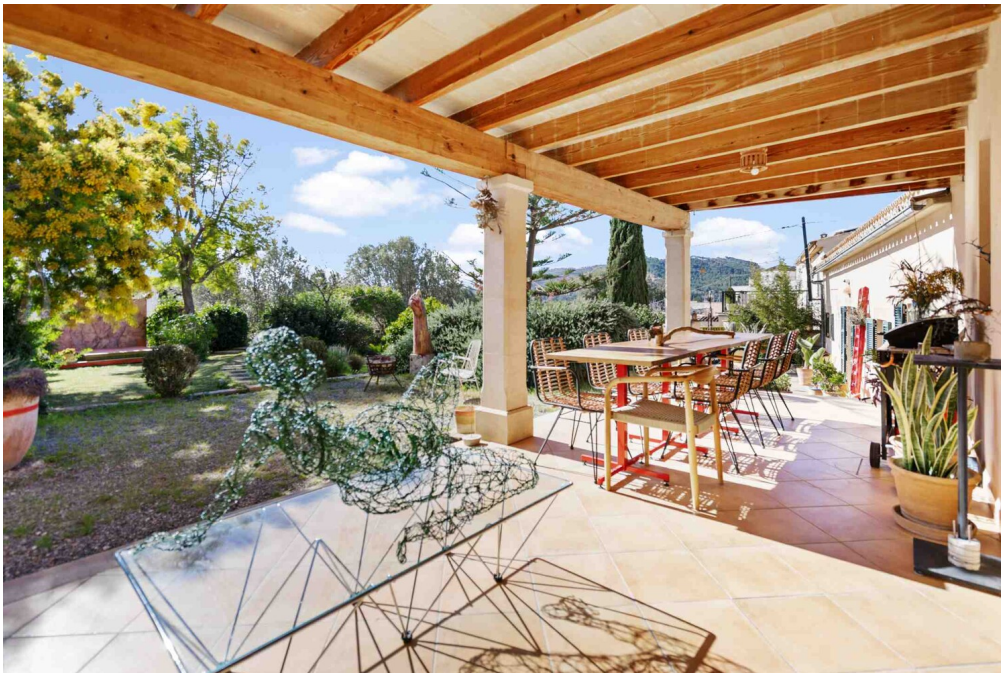
Property ID: ES263745797 - 07010 Establiments - Palma

The property



Property ID: ES263745797 - 07010 Establiments - Palma

The property



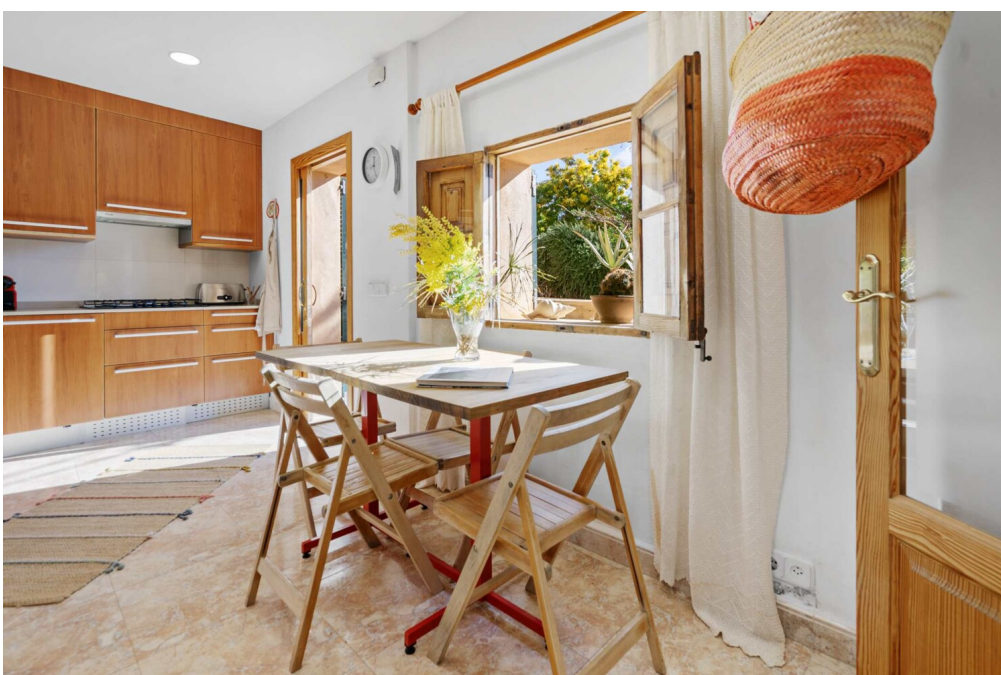
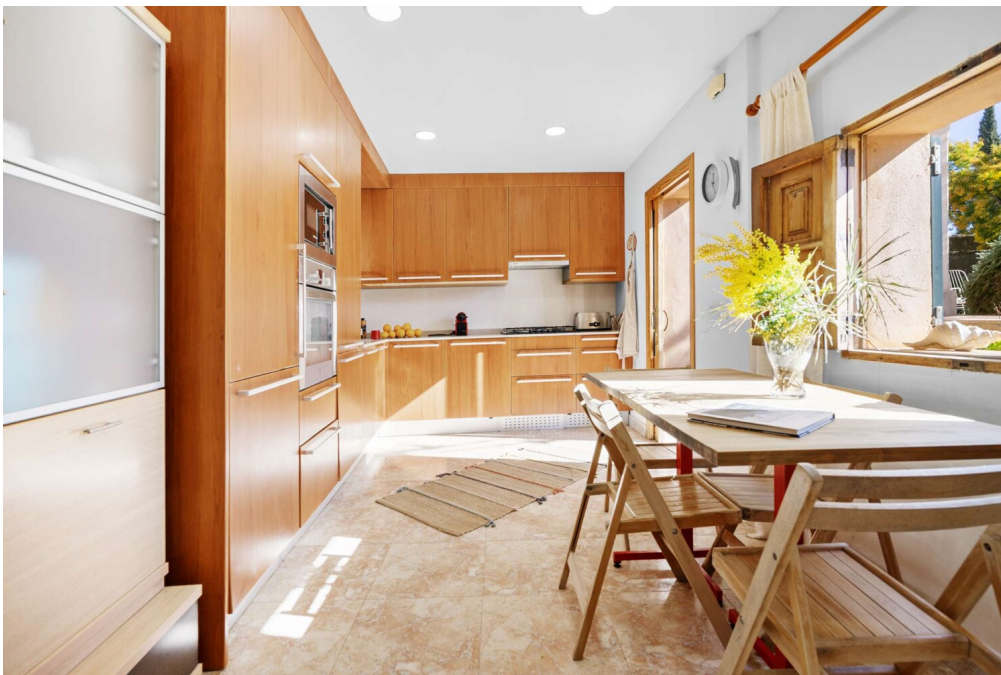
Property ID: ES263745797 - 07010 Establiments - Palma

The property



Property ID: ES263745797 - 07010 Establiments - Palma

The property



Property ID: ES263745797 - 07010 Establiments - Palma

The property



Property ID: ES263745797 - 07010 Establiments - Palma

The property



Property ID: ES263745797 - 07010 Establiments - Palma

The property



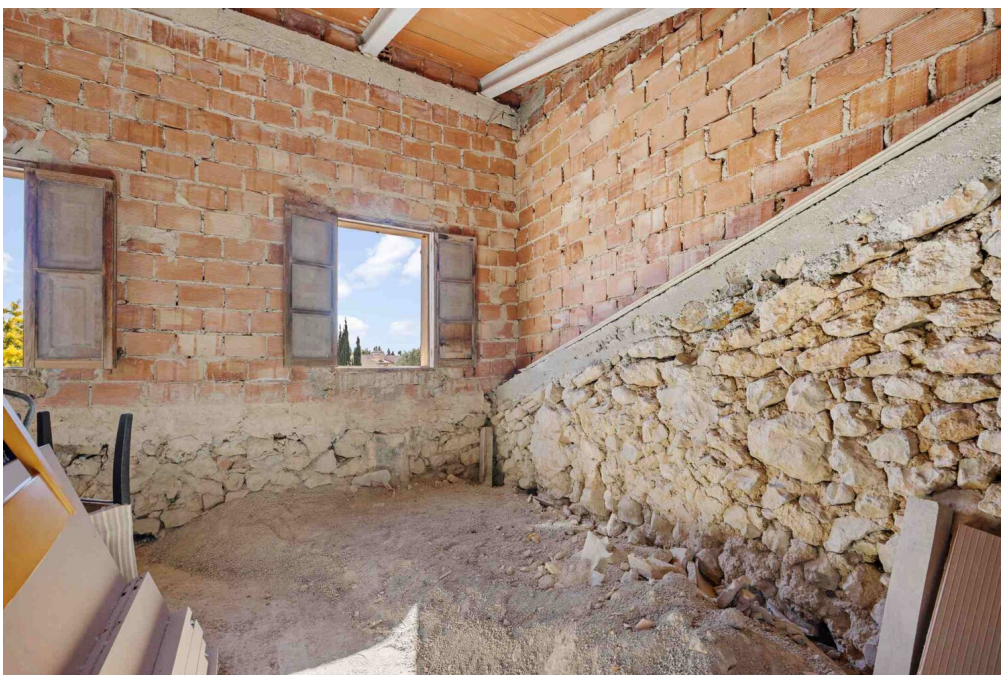
Property ID: ES263745797 - 07010 Establiments - Palma

The property



Property ID: ES263745797 - 07010 Establiments - Palma

The property



Property ID: ES263745797 - 07010 Establiments - Palma

The property



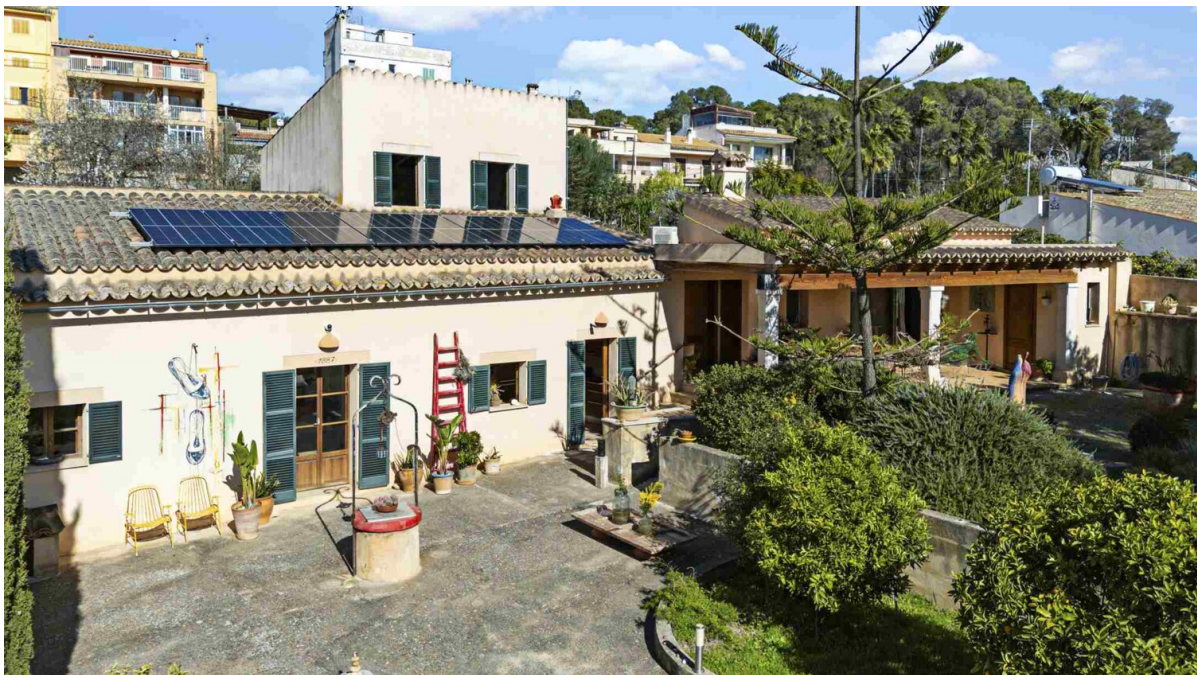
Property ID: ES263745797 - 07010 Establiments - Palma

The property



Property ID: ES263745797 - 07010 Establiments - Palma

The property



Property ID: ES263745797 - 07010 Establiments - Palma

A first impression

Welcome to your dream home in Establiments, Palma! This detached house from 1887 harmoniously combines historical charm with modern comfort. On a spacious plot of approx. 847 m² and with a living area of approx. 174 m², there are a total of 5 rooms, including 4 bedrooms. Traditional elements such as original wood and hydraulic floors are still preserved in some rooms and give the house its unique character.

The main house has three bedrooms - two of which are located on the first floor, while the third awaits completion on the upper floor. Together with the guest area, there is plenty of privacy and comfort. Two bathrooms provide additional comfort.

A fully equipped fitted kitchen and a cozy living room create the ideal place for cozy evenings at home.

Enjoy sunny days on the covered veranda overlooking the impressive garden.

The house is ready to move into and has a valid certificate of habitability. Contact us for more information. Welcome to your new home!

Property ID: ES263745797 - 07010 Establiments - Palma

Details of amenities

- **Fitted kitchen**
- **Tiled floor**
- **air conditioning**
- **terrace**

Property ID: ES263745797 - 07010 Establiments - Palma

All about the location

Establiments is a charming village located about 7 km north of the city center of Palma de Mallorca. It has retained its rural character while offering excellent connections to the capital. With a manageable population of around 2,000 people, it is an ideal place for those who appreciate a quiet and relaxed environment without having to sacrifice proximity to the vibrant city. The area is characterized by rolling hills and Mediterranean vegetation, making it an attractive retreat for nature lovers. One of the special sights in the area is the "Son Espases" aqueduct, a historic structure that was part of Palma's old water supply system and represents the technical engineering of times gone by. The nearby manor house "Son Berga" is also worth a visit, with its typical Mallorcan architecture. For families, Establiments offers a good selection of schools, which can be reached in a short drive. There are both state and international schools in the immediate vicinity, which makes the location particularly attractive for expats. The quiet surroundings and family atmosphere of the village make it a perfect place to raise children.

The distance to Palma is around 7 km and the airport is also easily accessible, being around 17 km away. Overall, Establiments offers a perfect balance between village charm, historical significance and proximity to Palma, making it a desirable place to live for people looking for the best of both worlds.

Property ID: ES263745797 - 07010 Establiments - Palma

Other information

We generally recommend having the building law situation checked by a specialist lawyer. All details are based exclusively on information provided by the owner or client. We assume no liability for the completeness, accuracy and timeliness of the information. The brokerage fee is payable by the vendor. Any taxes, notary and land registry costs incurred on the purchase are to be borne by the buyer.

Property ID: ES263745797 - 07010 Establiments - Palma

Contact partner

For further information, please contact your contact person:

Florian Waetzoldt

Placa Hostals 11, 07320 Santa Maria del Camí

Tel.: +34 871 - 201 945

E-Mail: santamaria@von-poll.com

To the Disclaimer of von Poll Immobilien GmbH

www.von-poll.com