

Santa Maria del Camí - Mitte

Historic windmill with potential and versatile use in Santa Maria

Property ID: ES253745303_1



PURCHASE PRICE: 1.600.000 EUR • LIVING SPACE: ca. 459 m² • LAND AREA: 3.614 m²

Property ID: ES253745303_1 - 07320 Santa Maria del Camí - Mitte

- At a glance
- The property
- Energy Data
- Floor plans
- A first impression
- Details of amenities
- All about the location
- Other information
- Contact partner

Property ID: ES253745303_1 - 07320 Santa Maria del Camí - Mitte

At a glance

Property ID	ES253745303_1	Purchase Price	1.600.000 EUR
Living Space	ca. 459 m ²	Condition of property	Well-maintained
Bedrooms	5	Equipment	Terrace, Fireplace, Built-in kitchen
Bathrooms	3		
Year of construction	1900		

Property ID: ES253745303_1 - 07320 Santa Maria del Camí - Mitte

Energy Data

Energy Source	Air-to-water heat pump	Energy efficiency class	C
Energy certificate valid until	11.02.2031	Year of construction according to energy certificate	1900
Energy information	At the time of preparing the document, no energy certificate was available.		

Property ID: ES253745303_1 - 07320 Santa Maria del Camí - Mitte

The property



Property ID: ES253745303_1 - 07320 Santa Maria del Camí - Mitte

The property



Property ID: ES253745303_1 - 07320 Santa Maria del Camí - Mitte

The property



Property ID: ES253745303_1 - 07320 Santa Maria del Camí - Mitte

The property



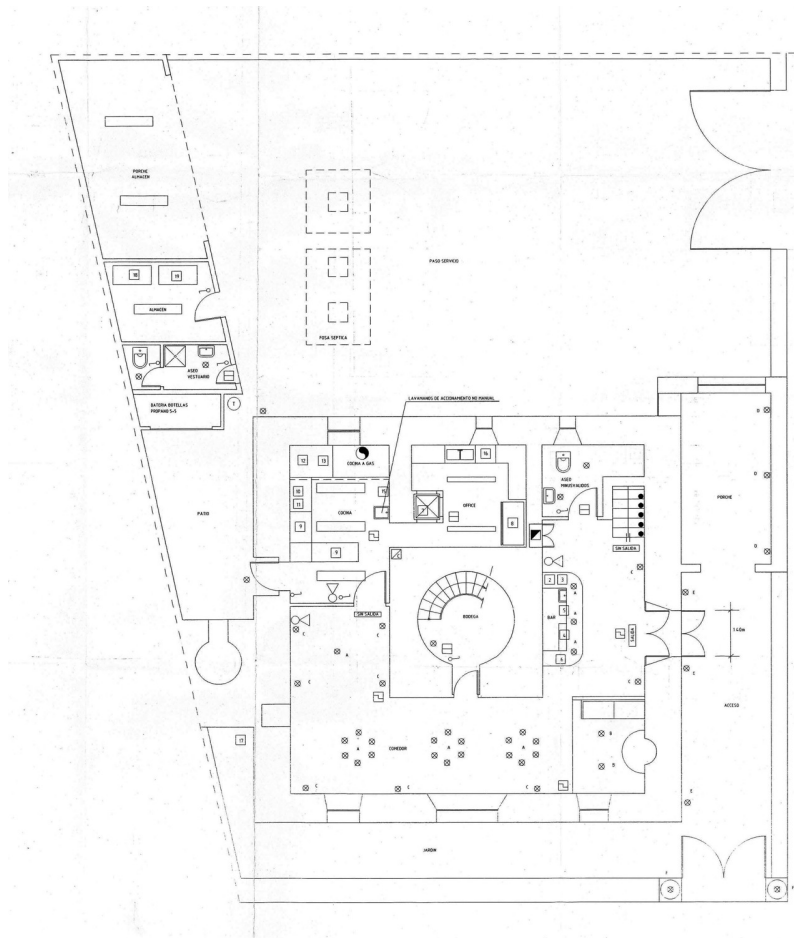
Property ID: ES253745303_1 - 07320 Santa Maria del Camí - Mitte

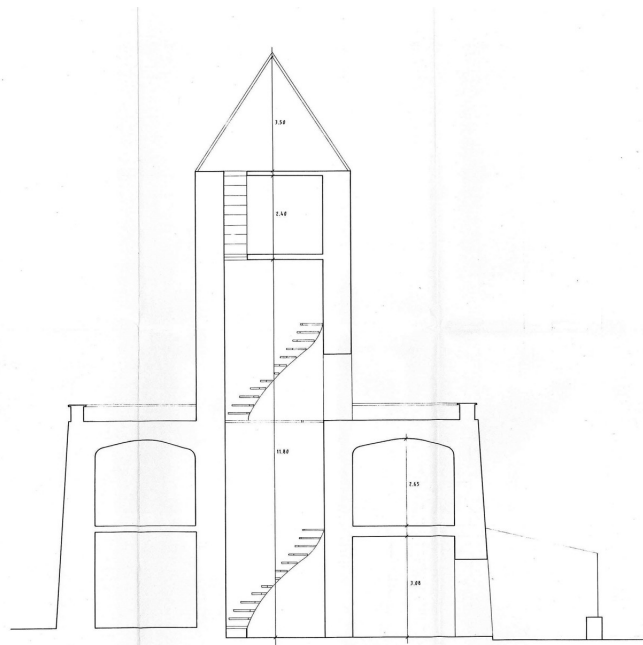
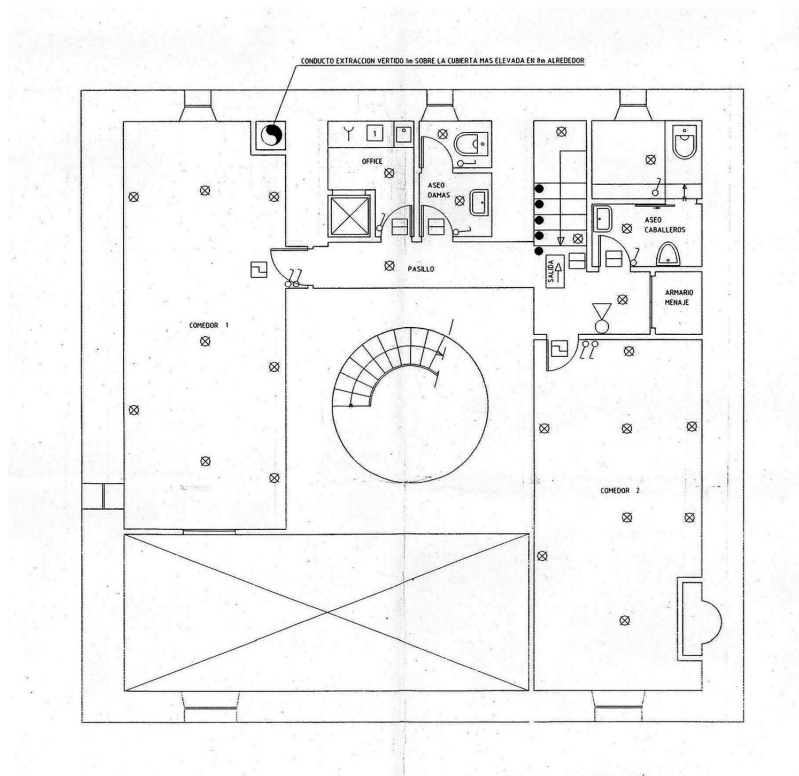
The property



Property ID: ES253745303_1 - 07320 Santa Maria del Camí - Mitte

Floor plans





This floor plan is not to scale. The documents were given to us by the client. For this reason, we cannot guarantee the accuracy of the information.

Property ID: ES253745303_1 - 07320 Santa Maria del Camí - Mitte

A first impression

Discover a unique property in Santa Maria del Camí - a historic windmill that is perfect for a variety of uses. On a generous plot of approx. 3,275 m², this exceptional property offers a living space of approx. 459 m².

This impressive mill is characterized by several inviting rooms, two spacious terraces and ample parking. Its strategic location in Santa Maria del Camí makes it ideal for either starting a thriving business or creating a stylish home.

Operated as a successful restaurant for many years, the mill is remembered as a place with charming interiors and attractive outdoor areas. It offers the perfect infrastructure for gastronomic or hospitality projects due to its former layout with professional kitchen space and refrigeration facilities.

This rare opportunity on the market combines history and modernity and is waiting for you to take it into a new chapter. Make this unique place your future in the picturesque surroundings of Santa Maria del Camí.

Property ID: ES253745303_1 - 07320 Santa Maria del Camí - Mitte

Details of amenities

- garden
- Air conditioning
- Outdoor parking lot
- terrace

Property ID: ES253745303_1 - 07320 Santa Maria del Camí - Mitte

All about the location

Santa María del Camí, a picturesque village in the heart of Mallorca with around 7,000 inhabitants, has developed into a highly sought-after location and combines traditional charm with modern comfort. The imposing parish church, with its striking bell tower, is an architectural jewel that reflects the history of the village. Another attraction is the wine, which is grown in Santa María and attracts many visitors. The weekly market is held on Sundays, with fresh produce, handmade goods and local specialties. The landscape, characterized by rolling hills and vineyards, is ideal for walks and bike rides and the nearby Tramuntana mountains can be explored. The central location of Santa María, just 20 km from Palma, makes it an attractive place to live for those who appreciate the tranquillity of village life and want to have the amenities of the city within easy reach. The airport and beaches are also within similar reach. There are high-quality restaurants and shopping facilities and, in addition to the renowned international school "The Montessori School", there is also a public school. The leisure center "Mallorca Fashion Outlet", just a few minutes away by car, offers numerous fashion stores, bars, restaurants and a large cinema.

Property ID: ES253745303_1 - 07320 Santa Maria del Camí - Mitte

Other information

We generally recommend having the building law situation checked by a specialist lawyer. All details are based exclusively on information provided by the owner or client. We assume no liability for the completeness, accuracy and timeliness of the information. The brokerage fee is payable by the vendor. Any taxes, notary and land registry costs incurred on the purchase are to be borne by the buyer.

Property ID: ES253745303_1 - 07320 Santa Maria del Camí - Mitte

Contact partner

For further information, please contact your contact person:

Florian Waetzoldt

Placa Hostals 11, 07320 Santa Maria del Camí

Tel.: +34 871 - 201 945

E-Mail: santamaria@von-poll.com

To the Disclaimer of von Poll Immobilien GmbH

www.von-poll.com