

Bunyola – Mitte

## Fabulous finca in mountainous surroundings with panoramic views and ETV in Bunyola

*Property ID: ES243744651*



**PURCHASE PRICE: 3.000.000 EUR • LIVING SPACE: ca. 333 m<sup>2</sup> • ROOMS: 6 • LAND AREA: 14.785 m<sup>2</sup>**

Property ID: ES243744651 - 07110 Bunyola – Mitte

- At a glance
- The property
- Energy Data
- A first impression
- All about the location
- Other information
- Contact partner

Property ID: ES243744651 - 07110 Bunyola – Mitte

## At a glance

Property ID	ES243744651
Living Space	ca. 333 m²
Rooms	6
Bedrooms	5
Bathrooms	4
Year of construction	2008
Type of parking	1 x Garage

Purchase Price	3.000.000 EUR
Condition of property	Well-maintained
Equipment	Terrace, Swimming pool, Fireplace

Property ID: ES243744651 - 07110 Bunyola – Mitte

## Energy Data

Type of heating	Central heating
Power Source	Gas
Energy information	At the time of preparing the document, no energy certificate was available.

Property ID: ES243744651 - 07110 Bunyola – Mitte

## The property





Property ID: ES243744651 - 07110 Bunyola – Mitte

## The property



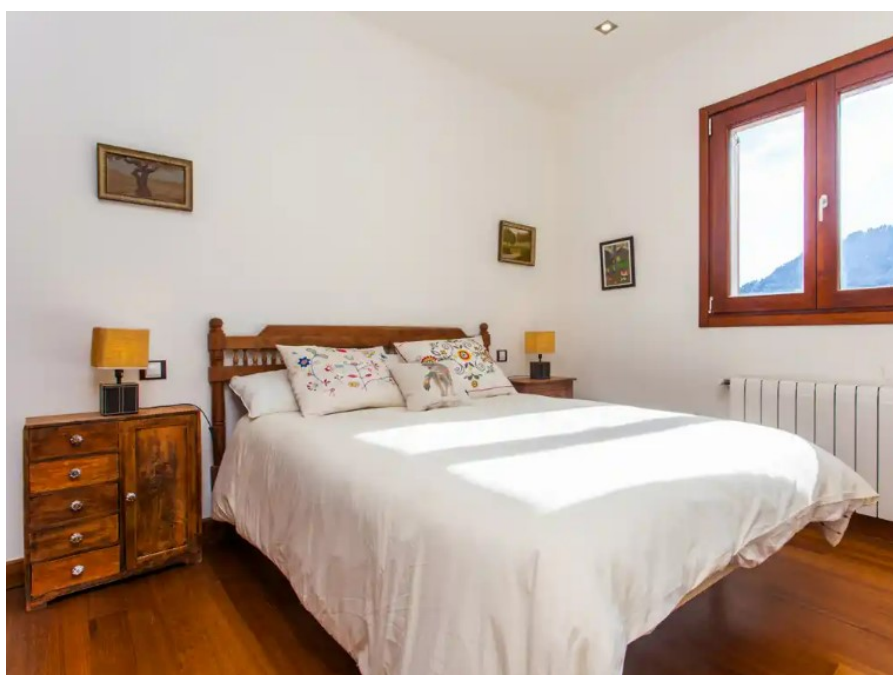
Property ID: ES243744651 - 07110 Bunyola – Mitte

## The property



Property ID: ES243744651 - 07110 Bunyola – Mitte

## The property





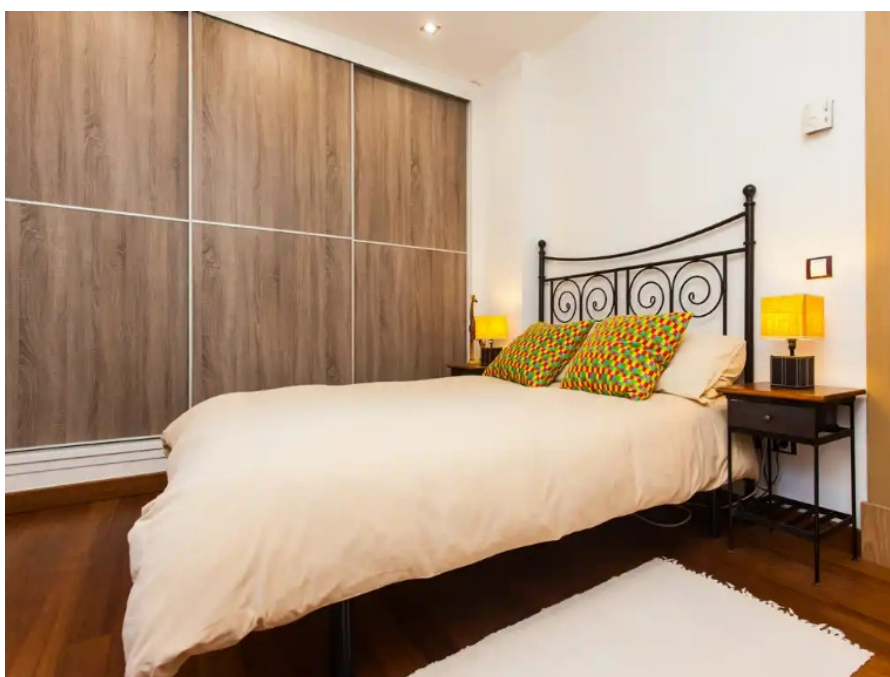
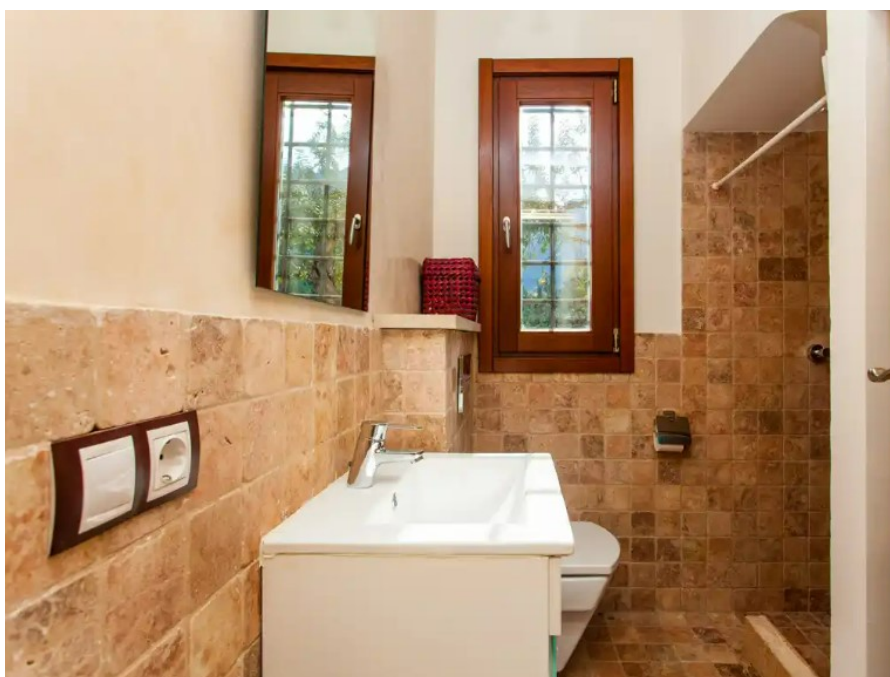
Property ID: ES243744651 - 07110 Bunyola – Mitte

## The property



Property ID: ES243744651 - 07110 Bunyola – Mitte

## The property



Property ID: ES243744651 - 07110 Bunyola – Mitte

## The property



Property ID: ES243744651 - 07110 Bunyola – Mitte

## A first impression

Situated on a gently sloping hill is this charming finca with fantastic views of the Tramuntana mountains and the magnificent surrounding landscape. Its environment enjoys an impressive peace and tranquility that invites you to relax deeply. However, it is only a few kilometers away from the center of Bunyola with its main square, cafes, restaurants with local gastronomy and stores. Palma can be reached in about 20 minutes by car and Bunyola in about 5 minutes.

The house distributed over two floors has about 333m<sup>2</sup> built on a large plot of more than 14.000m<sup>2</sup>. It offers five spacious bedrooms, four bathrooms, two of them en-suite, sunny living-dining room, modern and equipped kitchen-dining room as well as a large south facing terrace, propane heating and pellet stove that give a warm and pleasant atmosphere in cold months. It also has centralized air conditioning system, high quality materials, wooden floors and large windows that provide the house with plenty of natural light. Outside, in a green garden there is a fabulous saltwater pool, ideal space to enjoy the sun and cool off. It also has a guest house with its kitchenette, a bathroom and bedroom. And it also enjoys a vacation rental license, which is a great plus, to complete this wonderful property.

We invite you to visit this great finca, contact us!



Property ID: ES243744651 - 07110 Bunyola – Mitte

## All about the location

Bunyola, a picturesque village at the foot of the Serra de Tramuntana, offers a perfect combination of traditional Mallorcan culture and breathtaking nature. With its narrow streets and authentic stone houses, it attracts peace seekers and nature lovers alike. Particularly worth seeing are the Jardins d'Alfàbia, magnificent historic gardens with exotic plants, water features and a 13th century manor house. The parish church of Sant Mateu is another highlight, known for its impressive baroque architecture.

For hikers and cyclists, the surrounding area offers numerous routes, including the famous GR221 hiking trail, which leads through the Serra de Tramuntana. A trip on the historic train from Palma to Sóller, which passes through Bunyola, is also an unforgettable experience.

Bunyola's proximity to Palma and Sóller makes it ideal for those who want to enjoy the tranquillity of the countryside while enjoying the benefits of the cities.

Bunyola combines tradition, nature and comfort - a perfect place to live and relax.

Property ID: ES243744651 - 07110 Bunyola – Mitte

## Other information

We generally recommend having the building law situation checked by a specialist lawyer. All details are based exclusively on information provided by the owner or client. We assume no liability for the completeness, accuracy and timeliness of the information. The brokerage fee is payable by the vendor. Any taxes, notary and land registry costs incurred on the purchase are to be borne by the buyer.

Property ID: ES243744651 - 07110 Bunyola – Mitte

## Contact partner

For further information, please contact your contact person:

Florian Waetzoldt

---

Placa Hostals 11, 07320 Santa Maria del Camí

Tel.: +34 871 - 201 945

E-Mail: [santamaria@von-poll.com](mailto:santamaria@von-poll.com)

*To the Disclaimer of von Poll Immobilien GmbH*

---

[www.von-poll.com](http://www.von-poll.com)