

Santa María del Camí - Mitte

Fantastic finca with panoramic views of the Tramuntana near Santa Maria del Cami.

Property ID: ES233744608



PURCHASE PRICE: 8.750.000 EUR • LIVING SPACE: ca. 597,54 m² • ROOMS: 7 • LAND AREA: 15.886 m²

Property ID: ES233744608 - 074320 Santa María del Camí - Mitte

- **At a glance**
- **The property**
- **Energy Data**
- **Floor plans**
- **A first impression**
- **All about the location**
- **Other information**
- **Contact partner**

Property ID: ES233744608 - 074320 Santa María del Camí - Mitte

At a glance

Property ID	ES233744608	Purchase Price	8.750.000 EUR
Living Space	ca. 597,54 m ²	House	Finca
Rooms	7	Condition of property	Projected
Bedrooms	5	Equipment	Terrace, Swimming pool
Bathrooms	6		
Year of construction	2025		
Type of parking	1 x Garage		

Property ID: ES233744608 - 074320 Santa María del Camí - Mitte

Energy Data

Type of heating	Underfloor heating	Energy efficiency class	A
Energy Source	Air-to-water heat pump	Year of construction according to energy certificate	2025
Energy certificate valid until	22.04.2035		
Energy information	At the time of preparing the document, no energy certificate was available.		

Property ID: ES233744608 - 074320 Santa María del Camí - Mitte

The property



Property ID: ES233744608 - 074320 Santa María del Camí - Mitte

The property



Property ID: ES233744608 - 074320 Santa María del Camí - Mitte

The property



Property ID: ES233744608 - 074320 Santa María del Camí - Mitte

The property



Property ID: ES233744608 - 074320 Santa María del Camí - Mitte

The property



Property ID: ES233744608 - 074320 Santa María del Camí - Mitte

The property



Property ID: ES233744608 - 074320 Santa María del Camí - Mitte

The property



Property ID: ES233744608 - 074320 Santa María del Camí - Mitte

The property



Property ID: ES233744608 - 074320 Santa María del Camí - Mitte

The property



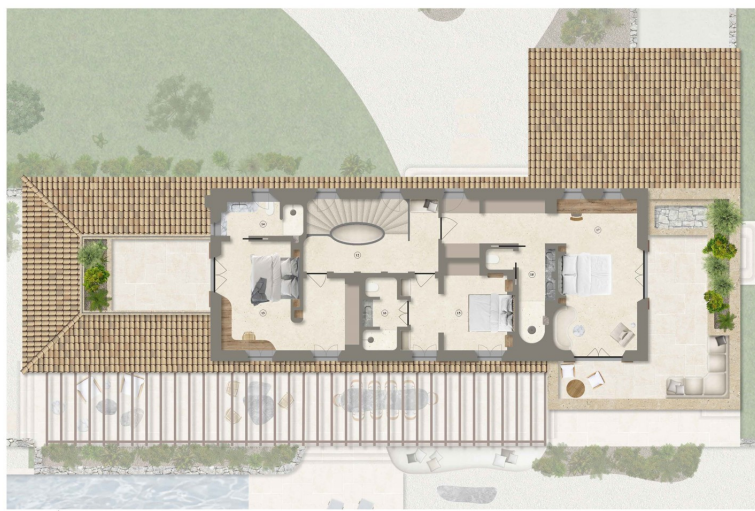
Property ID: ES233744608 - 074320 Santa María del Camí - Mitte

The property



Property ID: ES233744608 - 074320 Santa María del Camí - Mitte

Floor plans





This floor plan is not to scale. The documents were given to us by the client. For this reason, we cannot guarantee the accuracy of the information.

Property ID: ES233744608 - 074320 Santa María del Camí - Mitte

A first impression

Fantastic finca with fantastic panoramic views of the Tramuntana mountains in the immediate vicinity of the idyllic Santa Maria del Cami.

The finca, which was designed and approved according to the old building regulations, has a total buildable area of approx. 597 m² with a complete basement. The house is distributed over 2 floors and a basement, in which there is a large garage with space for 4 cars, a home theater, a machine room, a laundry room and a storage room. On the first floor there is a spacious living room with vaulted ceilings directly adjoining the dining room, a luxurious and spacious kitchen furnished with high quality materials, two bedrooms with en-suite bathrooms and a guest toilet. The entire first floor opens onto a pergola-covered terrace with space for large family gatherings and a beautiful 66 m² swimming pool and a fantastic chill-out area. On the second floor there is 1 double bedroom with its own dressing room and en-suite bathroom and two master suites of approximately 28 and 40 m² with a large dressing room and en-suite bathroom and access to spacious private terraces from which you can enjoy fantastic views of the garden and the mountains. This house offers many possibilities due to its size - a real beauty!

The shell is already in the completion phase and handover is planned for late 2024 / early 2025. We will be happy to send you floor plans and further information on request.

A great opportunity to secure one of the last large dream fincas in this sought-after top location near Santa Maria!

Property ID: ES233744608 - 074320 Santa María del Camí - Mitte

All about the location

Santa María del Camí, a picturesque village in the heart of Mallorca with around 7,000 inhabitants, has developed into a highly sought-after location and combines traditional charm with modern comfort. The imposing parish church, with its striking bell tower, is an architectural jewel that reflects the history of the village. Another attraction is the wine, which is grown in Santa María and attracts many visitors. The weekly market is held on Sundays, with fresh produce, handmade goods and local specialties. The landscape, characterized by rolling hills and vineyards, is ideal for walks and bike rides and the nearby Tramuntana mountains can be explored. The central location of Santa María, just 20 km from Palma, makes it an attractive place to live for those who appreciate the tranquillity of village life and want to have the amenities of the city within easy reach. The airport and beaches are also within similar reach. There are high-quality restaurants and shopping facilities and, in addition to the renowned international school "The Montessori School", there is also a public school. The leisure center "Mallorca Fashion Outlet", just a few minutes away by car, offers numerous fashion stores, bars, restaurants and a large cinema.

Property ID: ES233744608 - 074320 Santa María del Camí - Mitte

Other information

We generally recommend having the building law situation checked by a specialist lawyer. All details are based exclusively on information provided by the owner or client. We assume no liability for the completeness, accuracy and timeliness of the information. The brokerage fee is payable by the vendor. Any taxes, notary and land registry costs incurred on the purchase are to be borne by the buyer.

Property ID: ES233744608 - 074320 Santa María del Camí - Mitte

Contact partner

For further information, please contact your contact person:

Florian Waetzoldt

Placa Hostals 11, 07320 Santa Maria del Camí

Tel.: +34 871 - 201 945

E-Mail: santamaria@von-poll.com

To the Disclaimer of von Poll Immobilien GmbH

www.von-poll.com