

Santa María del Camí - Mitte

New-build residence with pool and views of the Tramuntana in a unique location in Santa Maria

Property ID: ES233744470



PURCHASE PRICE: 2.150.000 EUR • LIVING SPACE: ca. 279,16 m² • ROOMS: 4 • LAND AREA: 190 m²

Property ID: ES233744470 - 07320 Santa María del Camí - Mitte

- **At a glance**
- **The property**
- **Energy Data**
- **Floor plans**
- **A first impression**
- **Details of amenities**
- **All about the location**
- **Other information**
- **Contact partner**

Property ID: ES233744470 - 07320 Santa María del Camí - Mitte

At a glance

Property ID	ES233744470	Purchase Price	2.150.000 EUR
Living Space	ca. 279,16 m²	House	Terrace house
Rooms	4	Condition of property	Projected
Bedrooms	3	Equipment	Terrace, Swimming pool, Fireplace, Built-in kitchen
Bathrooms	2		
Year of construction	2024		
Type of parking	1 x Garage		

Property ID: ES233744470 - 07320 Santa María del Camí - Mitte

Energy Data

Type of heating	Underfloor heating	Energy efficiency class	A
Energy Source	Air-to-water heat pump	Year of construction according to energy certificate	2024
Energy certificate valid until	12.11.2033		
Energy information	At the time of preparing the document, no energy certificate was available.		

Property ID: ES233744470 - 07320 Santa María del Camí - Mitte

The property



Property ID: ES233744470 - 07320 Santa María del Camí - Mitte

The property



Property ID: ES233744470 - 07320 Santa María del Camí - Mitte

The property



Property ID: ES233744470 - 07320 Santa María del Camí - Mitte

The property



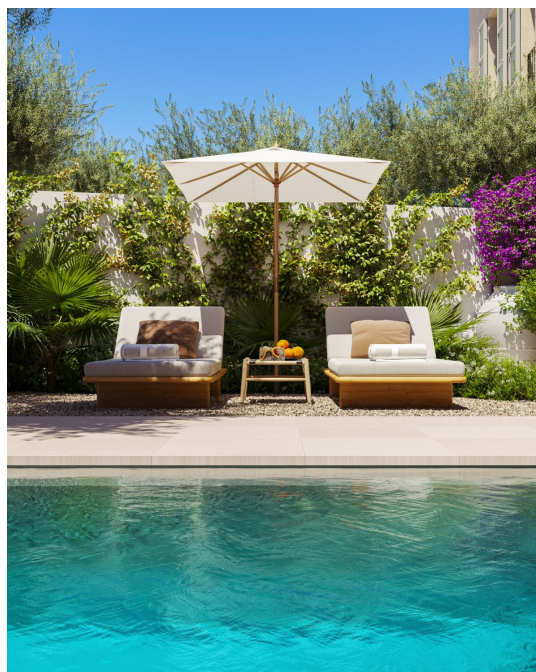
Property ID: ES233744470 - 07320 Santa María del Camí - Mitte

The property



Property ID: ES233744470 - 07320 Santa María del Camí - Mitte

The property



Property ID: ES233744470 - 07320 Santa María del Camí - Mitte

The property



Property ID: ES233744470 - 07320 Santa María del Camí - Mitte

The property

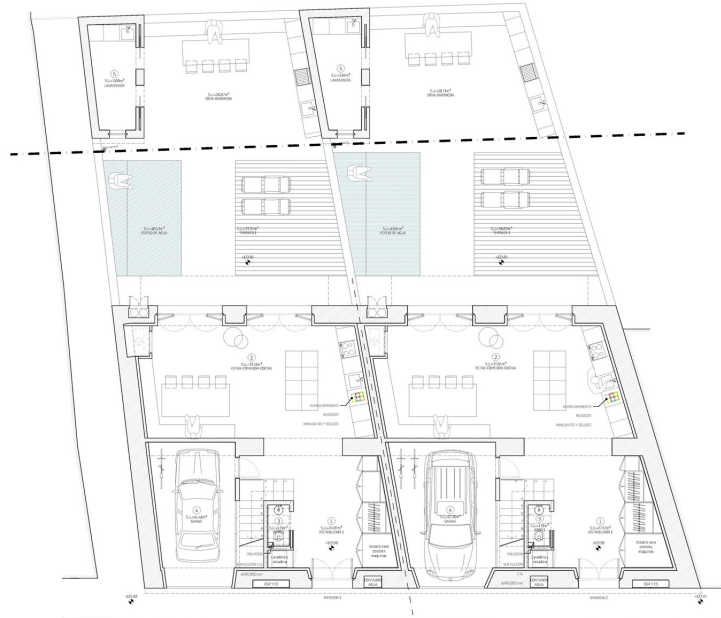


Property ID: ES233744470 - 07320 Santa María del Camí - Mitte

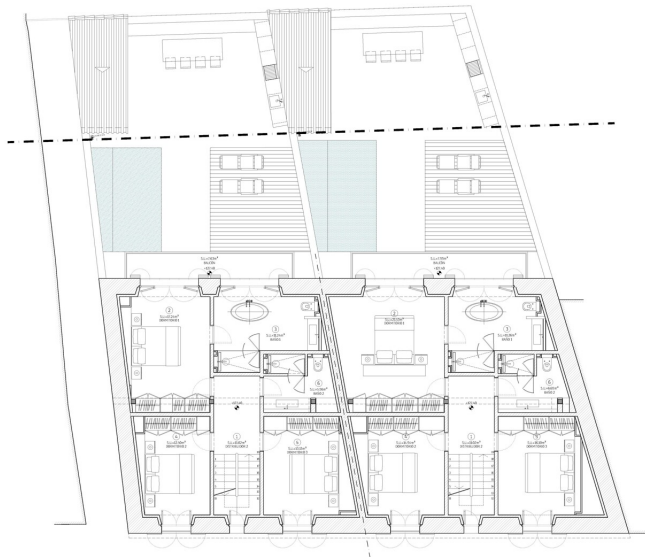
Floor plans

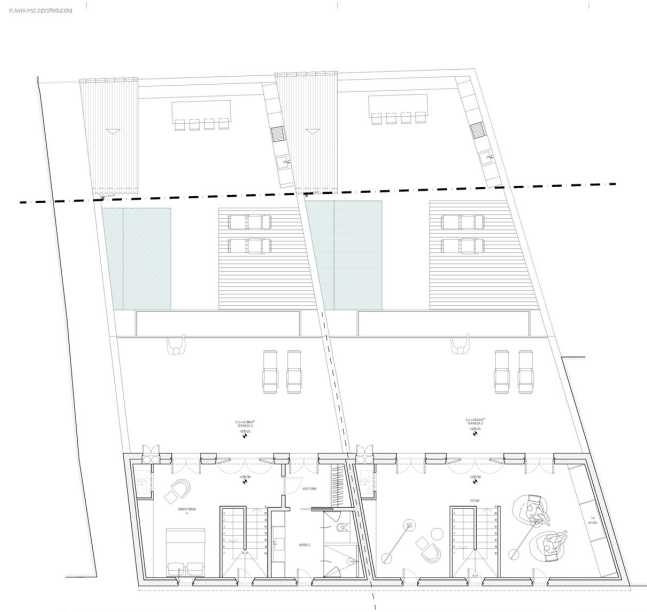


PLANNING DISTRIBUTION



PLANNING DISTRIBUTION





This floor plan is not to scale. The documents were given to us by the client. For this reason, we cannot guarantee the accuracy of the information.

Property ID: ES233744470 - 07320 Santa María del Camí - Mitte

A first impression

This unique project presents two new village houses in a quiet area of Santa Maria. The focus is on open, light-flooded spaces with high wooden beamed ceilings and large glass doors with metal frames, ensuring the highest quality standards for an incomparable living experience.

The properties are set over three floors and offer a private garage, a charming garden with pool and several terraces with views of the Serra de Tramuntana. The clever combination of architecture, landscape and interior design creates a harmonious balance throughout the house. The first floor features an inviting entrance area with direct access to the open-plan kitchen and dining area. From here, the room opens directly to the outside. On the second floor there are three bedrooms and two bathrooms. The master bedroom with en-suite bathroom offers breathtaking views of the Tramuntana mountains and a private balcony. The highlight is revealed on the second floor with a spacious living area complete with fireplace and an approx. 40 m² roof terrace with unique panoramic views of the mountains.

The result of this extraordinary project manifests itself in the perfect fusion of traditional Mallorcan architecture and modern design. The outdoor area impresses with an inviting patio with green areas, a cozy outdoor dining area and a pool.

The living area is approx. 279 m², divided into approx. 190 m² for the interior and approx. 89 m² for the exterior. Further features include mains electricity and water, stone floors throughout, wooden floors in the bedrooms, underfloor heating and air conditioning.

Property ID: ES233744470 - 07320 Santa María del Camí - Mitte

Details of amenities

- Underfloor heating
- Air conditioning
- Fireplace
- garden
- swimming pool
- Roof terrace with panoramic views
- garage

Property ID: ES233744470 - 07320 Santa María del Camí - Mitte

All about the location

Santa Maria del Camí, a picturesque village in the heart of Mallorca, combines traditional charm with modern comfort. Known for its wine production and authentic ambience, this village is a popular destination for locals and visitors alike.

The imposing parish church, with its striking bell tower, is an architectural gem that reflects the history of the village.

A highlight is the local weekly market, which takes place every Sunday and offers an abundance of fresh produce, handmade goods and local specialties.

Wine lovers should definitely visit the numerous wineries in the area and sample the delicious local wines. The picturesque landscape, characterized by rolling hills and vineyards, invites you to take relaxing walks and bike rides.

Santa Maria del Camí is also an ideal starting point for excursions into the surrounding countryside. The nearby Tramuntana mountains offer spectacular hiking trails and breathtaking views of the island.

The central location of Santa Maria del Camí, only about 20 km from Palma, makes it an attractive place to live for those who appreciate the tranquillity of village life but still want the amenities of the city within easy reach.

Property ID: ES233744470 - 07320 Santa María del Camí - Mitte

Other information

We generally recommend having the building law situation checked by a specialist lawyer. All details are based exclusively on information provided by the owner or client. We assume no liability for the completeness, accuracy and timeliness of the information. The brokerage fee is payable by the vendor. Any taxes, notary and land registry costs incurred on the purchase are to be borne by the buyer.

Property ID: ES233744470 - 07320 Santa María del Camí - Mitte

Contact partner

For further information, please contact your contact person:

Florian Waetzoldt

Placa Hostals 11, 07320 Santa Maria del Camí

Tel.: +34 871 - 201 945

E-Mail: santamaria@von-poll.com

To the Disclaimer of von Poll Immobilien GmbH

www.von-poll.com