

Selva – Mitte

# Traditional Mallorcan house blended with modern architecture.

Property ID: ES223743929



PURCHASE PRICE: 4.250.000 EUR • LIVING SPACE: ca. 525 m<sup>2</sup> • ROOMS: 5 • LAND AREA: 24.342 m<sup>2</sup>

Property ID: ES223743929 - 07313 Selva – Mitte

- At a glance
- The property
- Energy Data
- A first impression
- Contact partner

Property ID: ES223743929 - 07313 Selva – Mitte

## At a glance

Property ID	ES223743929
Living Space	ca. 525 m²
Available from	According to the arrangement
Rooms	5
Bedrooms	4
Bathrooms	4

Purchase Price	4.250.000 EUR
Usable Space	ca. 0 m²
Equipment	Swimming pool

Property ID: ES223743929 - 07313 Selva – Mitte

## Energy Data

Type of heating

Underfloor heating



Property ID: ES223743929 - 07313 Selva – Mitte

## The property





Property ID: ES223743929 - 07313 Selva – Mitte

## The property



Property ID: ES223743929 - 07313 Selva – Mitte

## The property





Property ID: ES223743929 - 07313 Selva – Mitte

## The property



Property ID: ES223743929 - 07313 Selva – Mitte

## The property





Property ID: ES223743929 - 07313 Selva – Mitte

## The property



Property ID: ES223743929 - 07313 Selva – Mitte

## The property





Property ID: ES223743929 - 07313 Selva – Mitte

## The property





Property ID: ES223743929 - 07313 Selva – Mitte

## The property





Property ID: ES223743929 - 07313 Selva – Mitte

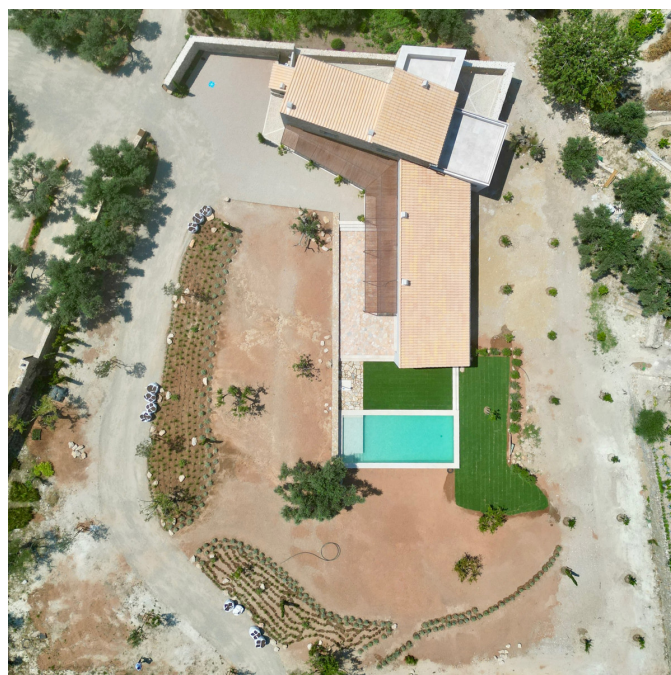
## The property





Property ID: ES223743929 - 07313 Selva – Mitte

## The property



Property ID: ES223743929 - 07313 Selva – Mitte

## A first impression

This fabulous country estate is fully independent and surrounded by its forest and thus only few hundred meters away from the village of Selva settled in the Tramuntana Mountains. The old Stonehouse has been rebuilt and extended with a modern part to perfectly match today's needs. The old part contains 2 bedrooms on the ground floor with each an En-Suite bathroom, they both share an exterior patio. The new build part contains the luxurious kitchen with Gaggenau appliances, and a stone basin. It opens up to a light and bright living- dining area that offers access to the covered terrace and the pool area. Among one of the highlights is the huge terrace window that has views to the Village surrounded by the olive trees. The master suite has been given the full space of the first floor which offers a spacious bedroom with a bathtub that has fantastic views, an integrated wardrobe provides sufficient space and two private terraces with panoramic views complete the setup. The lower level offers space for another bedroom with an additional bathroom, home cinema or Spa. The house has been designed self-sufficient with solar panels, batteries and a backup generator. Underfloor heating and ducted air-condition are powered by an air-heat pump. The pool comes with a Jetstream. In regards to the beautiful designed garden that is underlined by the dry-stone walls that have been carefully restored there is an olive grove that could produce a sufficient amount of your own oil.

Property ID: ES223743929 - 07313 Selva – Mitte

## Contact partner

For further information, please contact your contact person:

Florian Waetzoldt

---

Placa Hostals 11 Mallorca - Santa Maria

**E-Mail:** [santamaria@von-poll.com](mailto:santamaria@von-poll.com)

*To Disclaimer of von Poll Immobilien GmbH*

---

[www.von-poll.com](http://www.von-poll.com)