

Palma – Palma

## Luxurious refurbished flat in a building located on the seafront promenade of Palma de Mallorca.

*Property ID: ES213165*



**PURCHASE PRICE: 720.000 EUR • LIVING SPACE: ca. 120 m<sup>2</sup>**

Property ID: ES213165 - 07015 Palma – Palma

- At a glance
- The property
- A first impression
- All about the location
- Contact partner

Property ID: ES213165 - 07015 Palma – Palma

## At a glance

Property ID	ES213165
Living Space	ca. 120 m²
Available from	According to the arrangement
Floor	2
Bedrooms	2
Bathrooms	2
Year of construction	1990
Type of parking	1 x Underground car park

Purchase Price	720.000 EUR
Condition of property	Modernised
Usable Space	ca. 120 m²
Equipment	Garden / shared use



Property ID: ES213165 - 07015 Palma – Palma

## The property





Property ID: ES213165 - 07015 Palma – Palma

## The property





Property ID: ES213165 - 07015 Palma – Palma

## The property





Property ID: ES213165 - 07015 Palma – Palma

## The property





Property ID: ES213165 - 07015 Palma – Palma

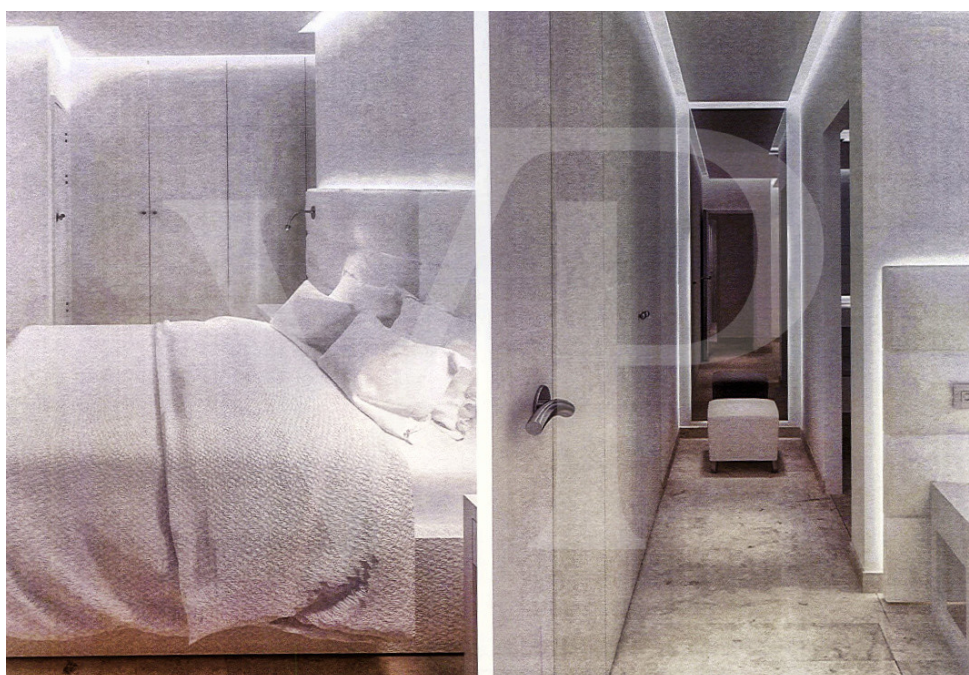
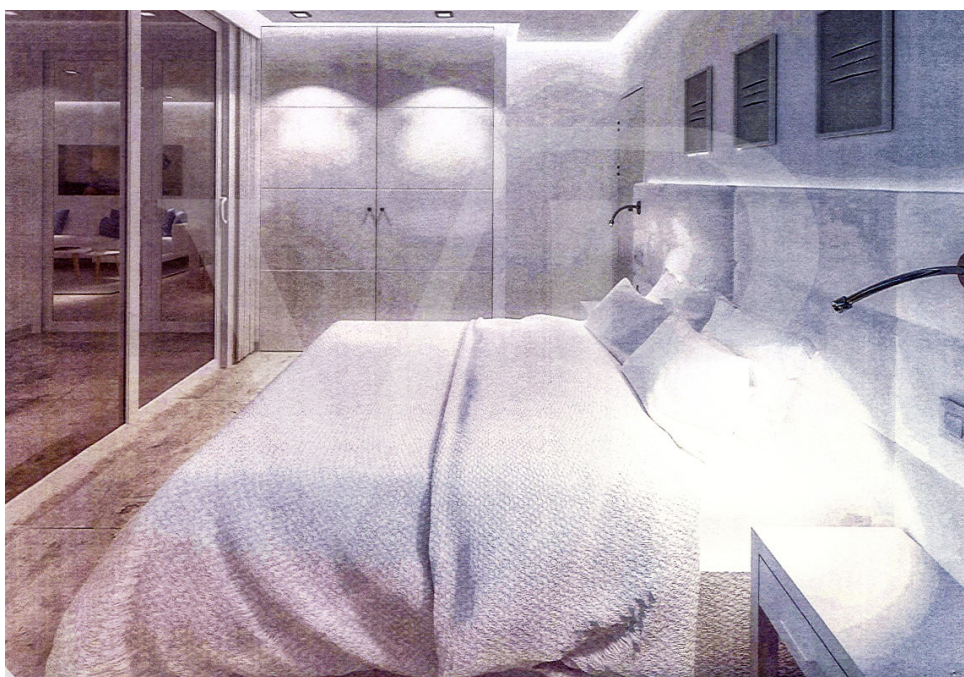
## The property





Property ID: ES213165 - 07015 Palma – Palma

## The property





Property ID: ES213165 - 07015 Palma – Palma

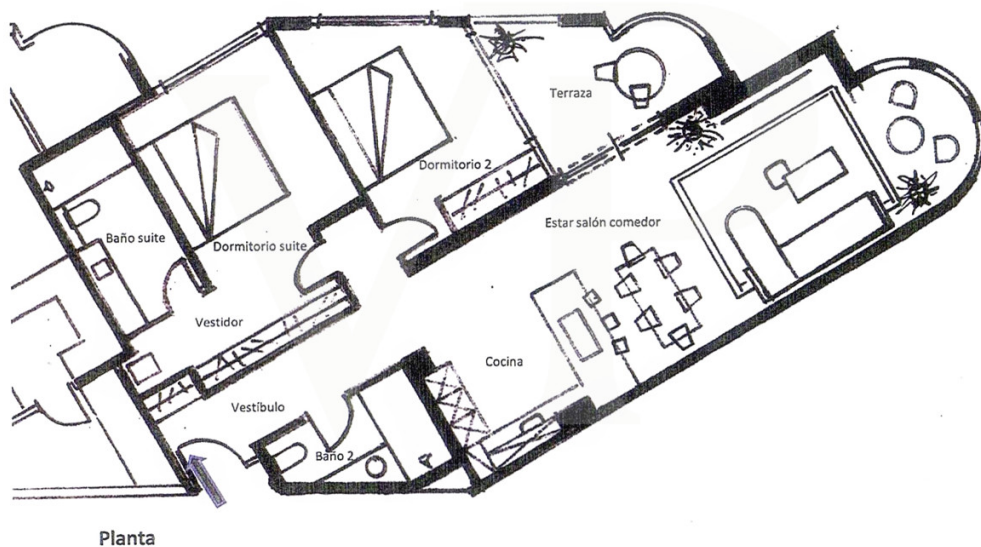
## The property





Property ID: ES213165 - 07015 Palma – Palma

## The property



Property ID: ES213165 - 07015 Palma – Palma

## The property





Property ID: ES213165 - 07015 Palma – Palma

## The property





Property ID: ES213165 - 07015 Palma – Palma

## The property



Property ID: ES213165 - 07015 Palma – Palma

## A first impression

For sale this luxurious flat in complete refurbishment in a fantastic building located in the first line of the promenade of Palma de Mallorca. Distributed on one floor with large entrance hall, complete bathroom with bathtub. All this diaphanous area integrates the modern kitchen with large peninsula open to the dining room, lots of storage area, living room and fabulous relaxation corner or office with fantastic large windows overlooking the promenade, from where you can see the sea and the spectacular Cathedral of Palma. Spacious double bedroom with dressing room and bathroom with bathtub en suite, a second double bedroom with direct access to a fantastic terrace from where you can also enjoy beautiful views. The large building has parking space and communal storage room in the underground floor of the building, video entry phone. Large children's playground and gardens next to the building. Possibility of choosing several options in the designs, according to tastes and needs.

**Property ID: ES213165 - 07015 Palma – Palma**

## All about the location

Property located in the maritime nerve centre of the Bay of Palma, close to the Club de Mar-Mallorca, the Port of Palma, Darsena de can barbará marina and Marina Port De Mallorca, the Oceanographic Centre of the Balearic Islands - Spanish Institute of Oceanography, Escola de Formació Professional Nauticopesquera de Palma, a few metres from the Marivent Palace, Club de Mar-Mallorca.



Property ID: ES213165 - 07015 Palma – Palma

## Contact partner

For further information, please contact your contact person:

Christian W. Czarnetzki

---

C./Cecilio Metelo 67 Mallorca - Pollensa

**E-Mail:** [pollensa@von-poll.com](mailto:pollensa@von-poll.com)

*To Disclaimer of von Poll Immobilien GmbH*

---

[www.von-poll.com](http://www.von-poll.com)