

Limpertsberg - Limpersberg

# Beautiful office space on the ground floor for rent

*Property ID: 62\_1*



**RENT PRICE: 0 EUR**

**Property ID: 62\_1 - L-1251 Limpertsberg - Limpersberg**

- **At a glance**
- **The property**
- **Floor plans**
- **A first impression**
- **Contact partner**

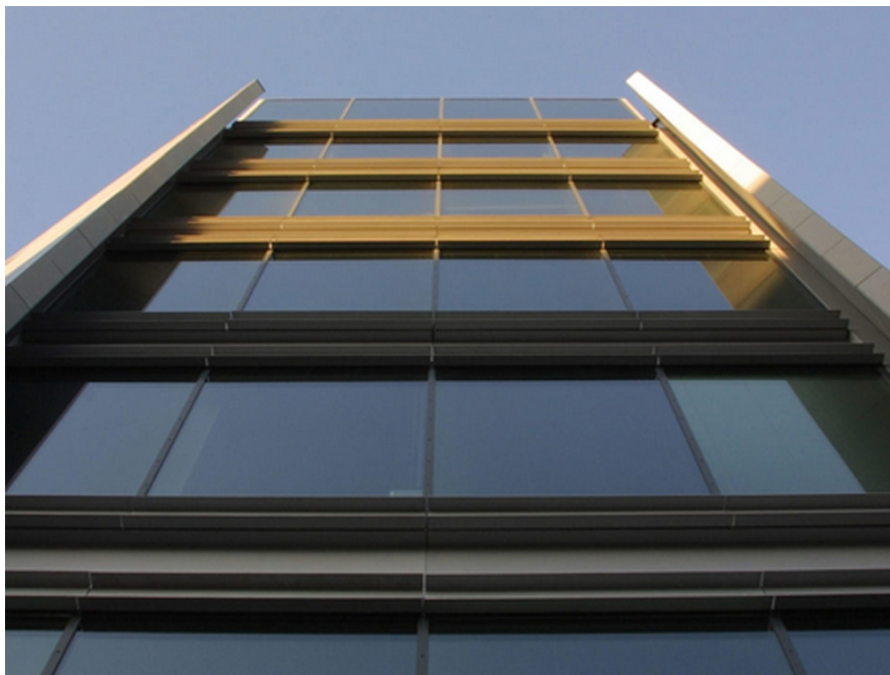
Property ID: 62\_1 - L-1251 Limpertsberg - Limpertsberg

## At a glance

Property ID	<b>62_1</b>	Rent price	<b>On request</b>
Year of construction	<b>2001</b>	Subject to commission	<b>Yes</b>
		Total Space	<b>ca. 119 m<sup>2</sup></b>
		Condition of property	<b>Like new</b>

Property ID: 62\_1 - L-1251 Limpertsberg - Limpertsberg

## The property



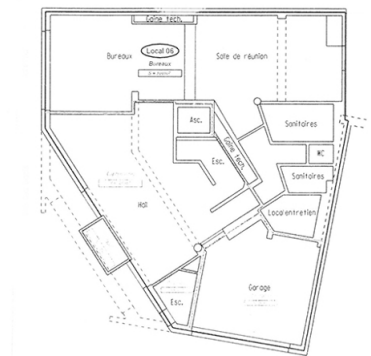
Property ID: 62\_1 - L-1251 Limpertsberg - Limpertsberg

## The property



Property ID: 62\_1 - L-1251 Limpertsberg - Limpertsberg

## Floor plans



This floor plan is not to scale. The documents were given to us by the client. For this reason, we cannot guarantee the accuracy of the information.

**Property ID: 62\_1 - L-1251 Limpertsberg - Limpersberg**

## **A first impression**

**The office surfaces are located at the corner of Glacis and Avenue du Bois and offers a very good visibility.**

**The complex was completely renovated in 2017 to provide optimum comfort to tenants.**

**The surfaces are on the ground floor on the 2nd and 3rd floors.**

**The property has all the amenities.**

**Property ID: 62\_1 - L-1251 Limpertsberg - Limpersberg**

## Contact partner

**For further information, please contact your contact person:**

**VON POLL REAL ESTATE Limpertsberg**

---

**6, avenue Pasteur, L-2310 Luxembourg**

**Tel.: +352 26 47 98**

**E-Mail: [limpertsberg@von-poll.com](mailto:limpertsberg@von-poll.com)**

*To the Disclaimer of von Poll Immobilien GmbH*

---

**[www.von-poll.com](http://www.von-poll.com)**