

Luxembourg - Cessage gasperich Howald
Office for short-term rent

Property ID: LU882000157



RENT PRICE: 0 EUR

Property ID: LU882000157 - 2453 Luxembourg - Cessage gasperich Howald

- **At a glance**
- **The property**
- **Floor plans**
- **A first impression**
- **Contact partner**

Property ID: LU882000157 - 2453 Luxembourg - Cessage gasperich Howald

At a glance

| | | | |
|-----------------|--------------------|-------------|------------------------------|
| Property ID | LU882000157 | Rent price | On request |
| Type of parking | 6 x Other | Commission | 1 mois |
| | | Total Space | ca. 816 m² |

Property ID: LU882000157 - 2453 Luxembourg - Cessage gasperich Howald

The property



Property ID: LU882000157 - 2453 Luxembourg - Cessage gasperich Howald

The property



Property ID: LU882000157 - 2453 Luxembourg - Cessage gasperich Howald

The property



Property ID: LU882000157 - 2453 Luxembourg - Cessage gasperich Howald

The property



Property ID: LU882000157 - 2453 Luxembourg - Cessage gasperich Howald

The property



Property ID: LU882000157 - 2453 Luxembourg - Cessage gasperich Howald

The property



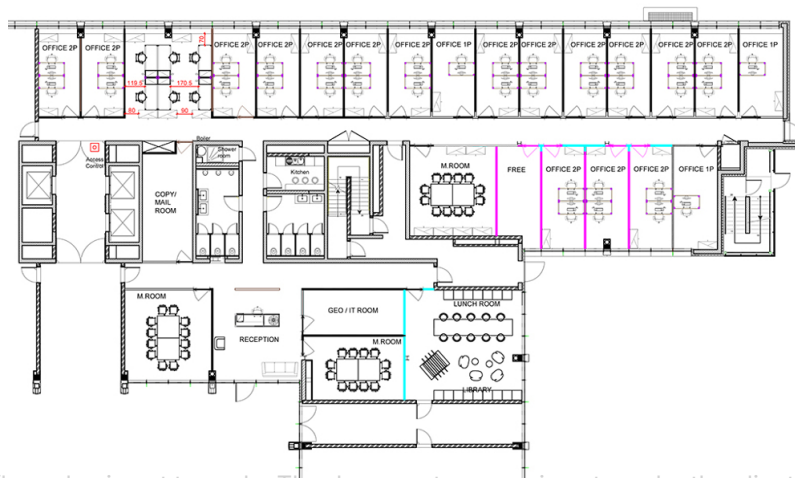
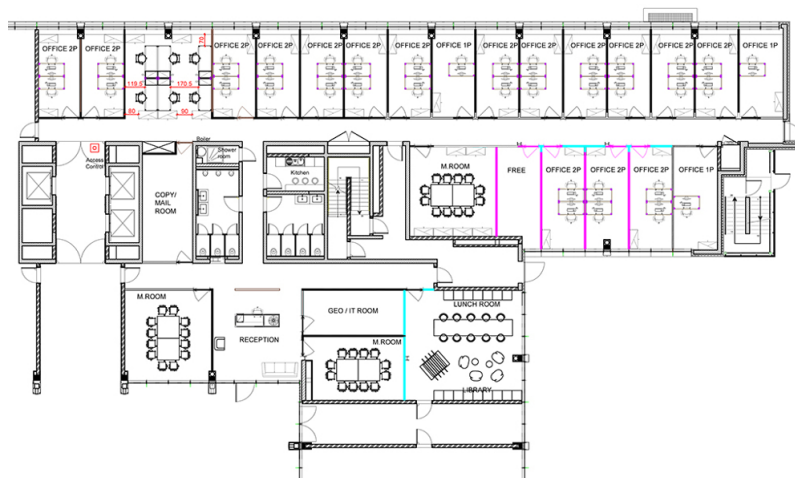
Property ID: LU882000157 - 2453 Luxembourg - Cessage gasperich Howald

The property



Property ID: LU882000157 - 2453 Luxembourg - Cessage gasperich Howald

Floor plans



This floor plan is not to scale. The documents were given to us by the client. For this reason, we cannot guarantee the accuracy of the information.

Property ID: LU882000157 - 2453 Luxembourg - Cessage gasperich Howald

A first impression

Beautiful, bright office space located on the ground floor of a complex of two buildings separated by a very cozy atrium, offering informal meeting areas. A professional reception desk is located at the entrance to direct visitors. The spaces are fully fitted out, partitioned, and tastefully furnished. The space comprises a reception area with a two-person desk, meeting rooms, a lounge area, a facility, numerous private offices, a storage room, and six parking spaces. The location is very accessible thanks to the improved public transport network. The lease is for a limited term, until February 2022, but could be extended subject to negotiation with the landlord.

Property ID: LU882000157 - 2453 Luxembourg - Cessage gasperich Howald

Contact partner

For further information, please contact your contact person:

VON POLL REAL ESTATE Limpertsberg

6, avenue Pasteur, L-2310 Luxembourg

Tel.: +352 26 47 98

E-Mail: limpertsberg@von-poll.com

To the Disclaimer of von Poll Immobilien GmbH

www.von-poll.com