

Luxembourg - Cessage gasperich Howald

# Office for short-term rent

**Property ID: LU882000157**



**RENT PRICE: 0 EUR**

**Property ID: LU882000157 - 2453 Luxembourg - Cessage gasperich Howald**

- At a glance
- The property
- Floor plans
- A first impression
- Contact partner

**Property ID: LU882000157 - 2453 Luxembourg - Cessage gasperich Howald**

## At a glance

Property ID	LU882000157	Rent price	On request
Type of parking	6 x Other	Commission	1 mois
		Total Space	ca. 816 m <sup>2</sup>

Property ID: LU882000157 - 2453 Luxembourg - Cessage gasperich Howald

## The property



Property ID: LU882000157 - 2453 Luxembourg - Cessage gasperich Howald

## The property



Property ID: LU882000157 - 2453 Luxembourg - Cessage gasperich Howald

## The property



Property ID: LU882000157 - 2453 Luxembourg - Cessage gasperich Howald

## The property



Property ID: LU882000157 - 2453 Luxembourg - Cessage gasperich Howald

## The property



Property ID: LU882000157 - 2453 Luxembourg - Cessage gasperich Howald

## The property



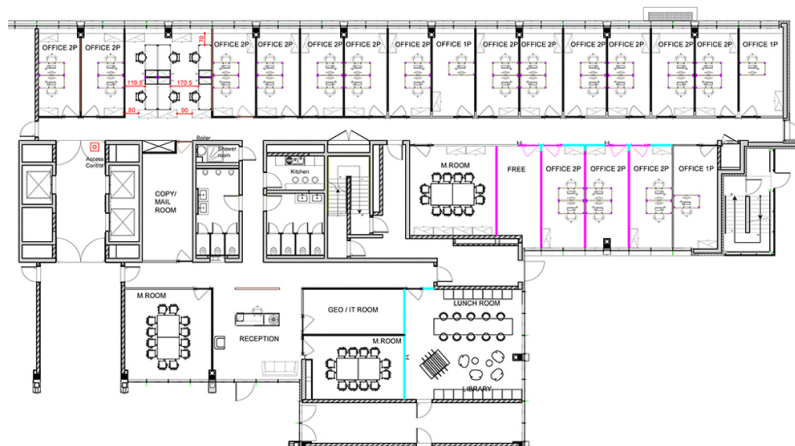
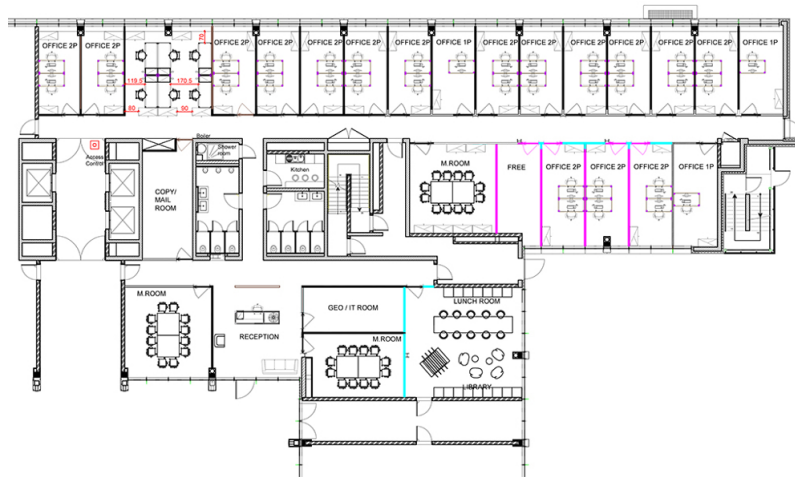
Property ID: LU882000157 - 2453 Luxembourg - Cessage gasperich Howald

## The property



Property ID: LU882000157 - 2453 Luxembourg - Cessage gasperich Howald

## Floor plans



This floor plan is not to scale. The documents were given to us by the client. For this reason, we cannot guarantee the accuracy of the information.

**Property ID: LU882000157 - 2453 Luxembourg - Cessage gasperich Howald**

## A first impression

Beautiful, bright office space located on the ground floor of a complex of two buildings separated by a very cozy atrium, offering informal meeting areas. A professional reception desk is located at the entrance to direct visitors. The spaces are fully fitted out, partitioned, and tastefully furnished. The space comprises a reception area with a two-person desk, meeting rooms, a lounge area, a facility, numerous private offices, a storage room, and six parking spaces. The location is very accessible thanks to the improved public transport network. The lease is for a limited term, until February 2022, but could be extended subject to negotiation with the landlord.

**Property ID: LU882000157 - 2453 Luxembourg - Cessage gasperich Howald**

## Contact partner

For further information, please contact your contact person:

VON POLL REAL ESTATE Limpertsberg

---

6, avenue Pasteur, L-2310 Luxembourg

Tel.: +352 26 47 98

E-Mail: [limpertsberg@von-poll.com](mailto:limpertsberg@von-poll.com)

*To the Disclaimer of von Poll Immobilien GmbH*

---

[www.von-poll.com](http://www.von-poll.com)