

Luxembourg-Centre - CBD

Office space for rent

Property ID: LU881900145



RENT PRICE: 0 EUR

Property ID: LU881900145 - L-1368 Luxembourg-Centre - CBD

- **At a glance**
- **The property**
- **Floor plans**
- **A first impression**
- **Contact partner**

Property ID: LU881900145 - L-1368 Luxembourg-Centre - CBD

At a glance

Property ID	LU881900145	Rent price	On request
Type of parking	2 x Underground car park, 350 EUR (Rent)	Commission	1 mois
		Total Space	ca. 282 m ²
		Condition of property	Well-maintained
		Equipment	Terrace

Property ID: LU881900145 - L-1368 Luxembourg-Centre - CBD

The property



Property ID: LU881900145 - L-1368 Luxembourg-Centre - CBD

The property



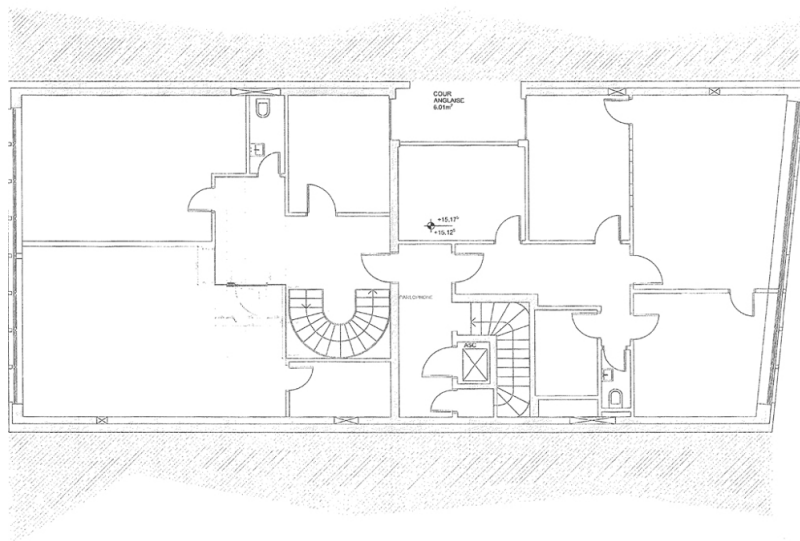
Property ID: LU881900145 - L-1368 Luxembourg-Centre - CBD

The property



Property ID: LU881900145 - L-1368 Luxembourg-Centre - CBD

Floor plans



This floor plan is not to scale. The documents were given to us by the client. For this reason, we cannot guarantee the accuracy of the information.

Property ID: LU881900145 - L-1368 Luxembourg-Centre - CBD

A first impression

Prestigious office space for rent in the heart of Luxembourg City with a terrace. The offices are spread over three floors with direct elevator access to each floor. The spaces are distributed as follows: - 5th floor: (approximately 92 m²), - 6th floor: (approximately 140 m²) with two superb terraces, - 7th floor: Top floor with sloping ceilings. Two indoor parking spaces are available as an option. Features include marble flooring, double-glazed office partitions, partial air conditioning, alarm system, and a Category 7 IT room.

Property ID: LU881900145 - L-1368 Luxembourg-Centre - CBD

Contact partner

For further information, please contact your contact person:

VON POLL REAL ESTATE Limpertsberg

6, avenue Pasteur, L-2310 Luxembourg

Tel.: +352 26 47 98

E-Mail: limpertsberg@von-poll.com

To the Disclaimer of von Poll Immobilien GmbH

www.von-poll.com