

Luxembourg-Centre - CBD

# Office space for rent

**Property ID: LU881900145**



**RENT PRICE: 0 EUR**

**Property ID: LU881900145 - L-1368 Luxembourg-Centre - CBD**

- **At a glance**
- **The property**
- **Floor plans**
- **A first impression**
- **Contact partner**

Property ID: LU881900145 - L-1368 Luxembourg-Centre - CBD

## At a glance

Property ID	<b>LU881900145</b>	Rent price	<b>On request</b>
Type of parking	<b>2 x Underground car park, 350 EUR (Rent)</b>	Office/Professional practice	<b>Office centre</b>
		Commission	<b>1 mois</b>
		Total Space	<b>ca. 282 m<sup>2</sup></b>
		Condition of property	<b>Well-maintained</b>
		Office space	<b>ca. 282 m<sup>2</sup></b>
		Equipment	<b>Terrace</b>

Property ID: LU881900145 - L-1368 Luxembourg-Centre - CBD

## The property



Property ID: LU881900145 - L-1368 Luxembourg-Centre - CBD

## The property



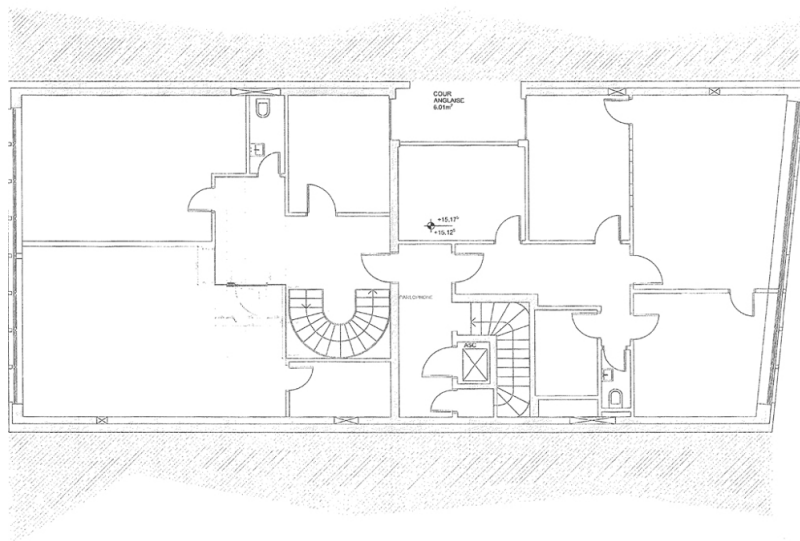
Property ID: LU881900145 - L-1368 Luxembourg-Centre - CBD

## The property



Property ID: LU881900145 - L-1368 Luxembourg-Centre - CBD

## Floor plans



This floor plan is not to scale. The documents were given to us by the client. For this reason, we cannot guarantee the accuracy of the information.

**Property ID: LU881900145 - L-1368 Luxembourg-Centre - CBD**

## **A first impression**

**Prestigious office space for rent in the heart of Luxembourg City with a terrace. The offices are spread over three floors with direct elevator access to each floor. The spaces are distributed as follows: - 5th floor: (approximately 92 m<sup>2</sup>), - 6th floor: (approximately 140 m<sup>2</sup>) with two superb terraces, - 7th floor: Top floor with sloping ceilings. Two indoor parking spaces are available as an option. Features include marble flooring, double-glazed office partitions, partial air conditioning, alarm system, and a Category 7 IT room.**

**Property ID: LU881900145 - L-1368 Luxembourg-Centre - CBD**

## Contact partner

**For further information, please contact your contact person:**

**VON POLL REAL ESTATE Limpertsberg**

---

**6, avenue Pasteur, L-2310 Luxembourg**

**Tel.: +352 26 47 98**

**E-Mail: [limpertsberg@von-poll.com](mailto:limpertsberg@von-poll.com)**

*To the Disclaimer of von Poll Immobilien GmbH*

---

**[www.von-poll.com](http://www.von-poll.com)**