

Luxembourg-centre ville - CBD

# Office for rent in beautiful building with service

*Property ID: 21*



**RENT PRICE: 0 EUR**

**Property ID: 21 - L-1331 Luxembourg-centre ville - CBD**

- **At a glance**
- **The property**
- **Energy Data**
- **A first impression**
- **Contact partner**

**Property ID: 21 - L-1331 Luxembourg-centre ville - CBD**

## At a glance

<b>Property ID</b>	<b>21</b>	<b>Rent price</b>	<b>On request</b>
		<b>Office/Professional practice</b>	<b>Office centre</b>
		<b>Commission</b>	<b>Fees: 15% to the charge under tenant</b>
		<b>Total Space</b>	<b>ca. 80 m<sup>2</sup></b>
		<b>Office space</b>	<b>ca. 80 m<sup>2</sup></b>

**Property ID: 21 - L-1331 Luxembourg-centre ville - CBD**

## Energy Data

Type of heating	Central heating
Energy information	At the time of preparing the document, no energy certificate was available.

Property ID: 21 - L-1331 Luxembourg-centre ville - CBD

## The property



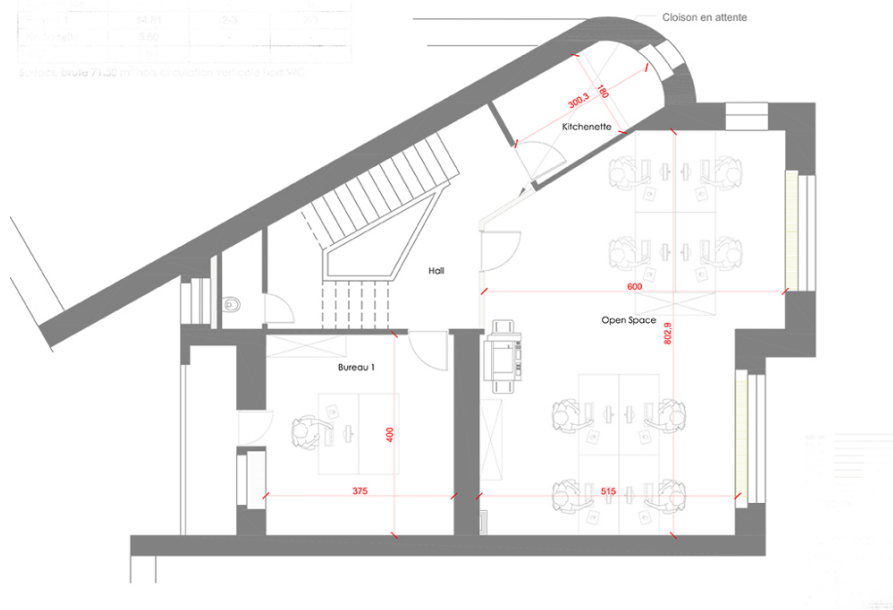
Property ID: 21 - L-1331 Luxembourg-centre ville - CBD

## The property



Particulars	Surface (sqm)	Surface (sqft)	Surface (sqm)
Surface totale	14,91	161	14,91
Surface utile	13,80	148	13,80

Surface Burea 7 1,20 m<sup>2</sup> hors circulation verticalement



**Property ID: 21 - L-1331 Luxembourg-centre ville - CBD**

## **A first impression**

**Offices to let in an entirely renovated building on one of the prestigious avenues of Luxembourg city -- CBD**

**This property offers a common reception, meeting room, leisure room, kitchen and toilets, to be shared with the other two tenants.**

**It is near all the amenities (public transport, restaurants, shops, etc) and close to the city center. The parking on the Winston Churchill square is also close by.**

**Located on one of the sought after avenues of Luxembourg (Boulevard Grande Duchesse Charlotte), these offices are 15 min. walking from the railway stations, a few minutes from the main bus hub and 15 min. from the international airport.**

**Property ID: 21 - L-1331 Luxembourg-centre ville - CBD**

## Contact partner

**For further information, please contact your contact person:**

**VON POLL REAL ESTATE Limpertsberg**

---

**6, avenue Pasteur, L-2310 Luxembourg**

**Tel.: +352 26 47 98**

**E-Mail: [limpertsberg@von-poll.com](mailto:limpertsberg@von-poll.com)**

*To the Disclaimer of von Poll Immobilien GmbH*

---

**[www.von-poll.com](http://www.von-poll.com)**