

Luxembourg-centre ville - CBD

Beautiful 352m2 office for rent, fully renovated.

Property ID: 20



RENT PRICE: 0 EUR

Property ID: 20 - L-2449 Luxembourg-centre ville - CBD

- **At a glance**
- **The property**
- **Floor plans**
- **A first impression**
- **All about the location**
- **Contact partner**

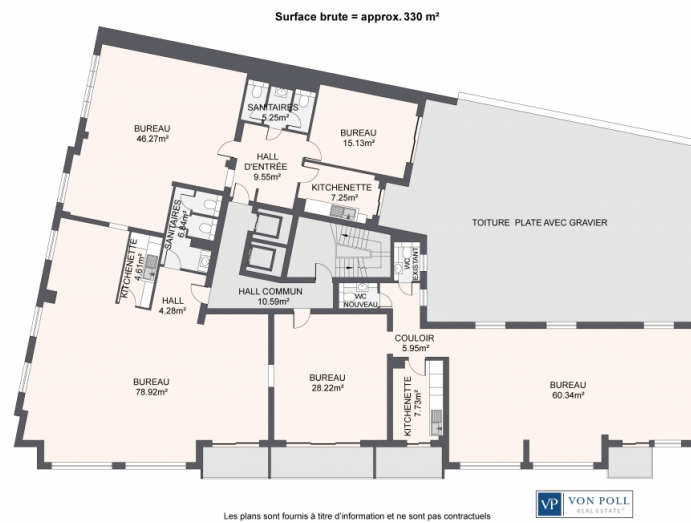
Property ID: 20 - L-2449 Luxembourg-centre ville - CBD

At a glance

Property ID	20	Rent price	On request
Type of parking	2 x Underground car park, 800 EUR (Rent)	Office/Professional practice	Office building
		Commission	12% pay by the owner
		Total Space	ca. 87 m²
		Condition of property	Completely renovated
		Office space	ca. 87 m²

Property ID: 20 - L-2449 Luxembourg-centre ville - CBD

Floor plans



This floor plan is not to scale. The documents were given to us by the client. For this reason, we cannot guarantee the accuracy of the information.

Property ID: 20 - L-2449 Luxembourg-centre ville - CBD

A first impression

Beautiful 87m² office space for rent in the heart of the city center. Completely renovated, this office space can be divided into units starting at 100m² and will be fully equipped. Partially partitioned, it comprises closed offices, a meeting room, an open-plan area, etc. Viewing recommended. Two indoor parking spaces are also included. This building is located on Boulevard Royal, in the city center, close to all amenities (public transport, restaurants, shops, etc.). The main highways are 10 minutes away, and the airport is 15 minutes away.

Property ID: 20 - L-2449 Luxembourg-centre ville - CBD

All about the location

Luxembourg-centre ville

Property ID: 20 - L-2449 Luxembourg-centre ville - CBD

Contact partner

For further information, please contact your contact person:

VON POLL REAL ESTATE Limpertsberg

6, avenue Pasteur, L-2310 Luxembourg

Tel.: +352 26 47 98

E-Mail: limpertsberg@von-poll.com

To the Disclaimer of von Poll Immobilien GmbH

www.von-poll.com