

Luxembourg-Limpertsberg – Luxembourg-Limpertsberg

Single-family house, free on three sides and in a quiet location on the Limpertsberg

Property ID: LU16000094



PURCHASE PRICE: 2.750.000 EUR • LIVING SPACE: ca. 396 m² • LAND AREA: 600 m²

Property ID: LU16000094 - L-2241 Luxembourg-Limpertsberg – Luxembourg-Limpertsberg

- At a glance
- The property
- Energy Data
- A first impression
- All about the location
- Other information
- Contact partner

Property ID: LU16000094 - L-2241 Luxembourg-Limpertsberg – Luxembourg-Limpertsberg

At a glance

Property ID	LU16000094
Living Space	ca. 396 m²
Available from	According to the arrangement
Bedrooms	5
Bathrooms	3
Type of parking	2 x Garage

Purchase Price	2.750.000 EUR
Usable Space	ca. 0 m²
Equipment	Terrace, Guest WC, Fireplace, Built-in kitchen

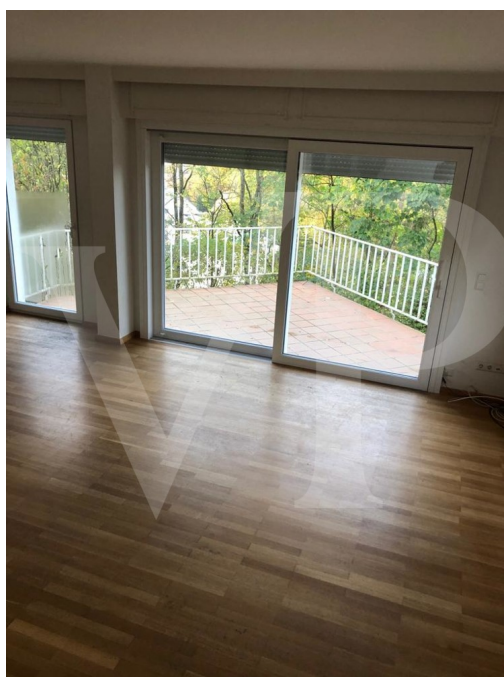
Property ID: LU16000094 - L-2241 Luxembourg-Limpertsberg – Luxembourg-Limpertsberg

Energy Data

Type of heating	Central heating
Power Source	Gas

Property ID: LU16000094 - L-2241 Luxembourg-Limpertsberg – Luxembourg-Limpertsberg

The property



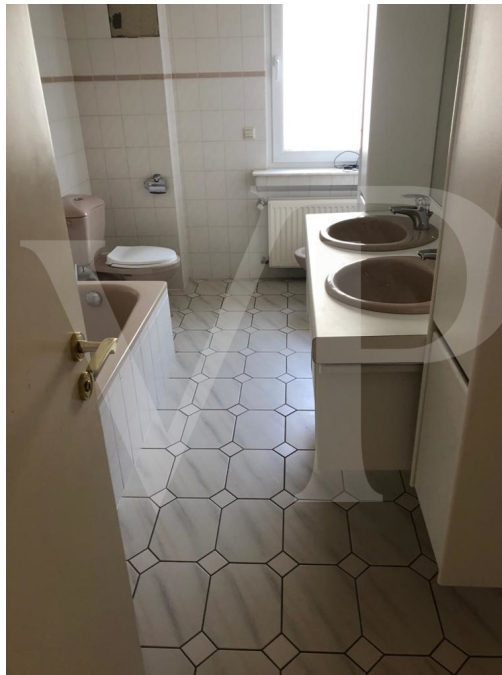
Property ID: LU16000094 - L-2241 Luxembourg-Limpertsberg – Luxembourg-Limpertsberg

The property



Property ID: LU16000094 - L-2241 Luxembourg-Limpertsberg – Luxembourg-Limpertsberg

The property



Property ID: LU16000094 - L-2241 Luxembourg-Limpertsberg – Luxembourg-Limpertsberg

The property



Property ID: LU16000094 - L-2241 Luxembourg-Limpertsberg – Luxembourg-Limpertsberg

A first impression

Von-Poll Luxembourg offers you a detached house in a quiet location in Limpertsberg for sale. On the ground floor there are an entrance hall with wardrobe, a fitted kitchen with access to the terrace, a separate WC, a living room with access to the terrace. The 1st floor offers a master bedroom with a balcony, a bathroom and a separate toilet. 2 bedrooms (one with a balcony) and a bathroom are located on the 2nd floor. The 3rd floor offers a big room usable as bedroom or office. On the basement there are a laundry room with access to the garden, a cellar room, a bedroom, a living room, a shower room, a separate toilet and a Garage for 2 cars.

Property ID: LU16000094 - L-2241 Luxembourg-Limpertsberg – Luxembourg-Limpertsberg

All about the location

The house is beautifully located at the end of a closed street with an access to Parc Tony Neuman. This parc is very peaceful and well kept with a big variety of flowers, big old trees, a pound, a dog park and a playground. The area is a very quite part of Limpertsberg, but you are still in walking distance to the city. In the middle of the street the kids can also enjoy a small playground and bus 19 will take you directly to the city center. Limpertsberg is the most sought after area in Luxembourg. It offers you a number popular schools, crèches, restaurants, bars, cafés, playgrounds and grocery shopping.

Property ID: LU16000094 - L-2241 Luxembourg-Limpertsberg – Luxembourg-Limpertsberg

Other information

All indications in the present document are based exclusively on the information made available to us by our customers. We do not assume any guarantee as to the completeness, accuracy and timeliness of these indications. The notary fees and registration fees in the land register are borne by the buyer. The sales commission is the responsibility of the seller, who has signed the sales mandate with our agency.

Property ID: LU16000094 - L-2241 Luxembourg-Limpertsberg – Luxembourg-Limpertsberg

Contact partner

For further information, please contact your contact person:

VON POLL REAL ESTATE Limpertsberg

6, avenue Pasteur Limpertsberg
E-Mail: limpertsberg@von-poll.com

To Disclaimer of von Poll Immobilien GmbH

www.von-poll.com