

Luxembourg

# Office for rent

*Property ID: LU881900104\_4*



Property ID: LU881900104\_4 - L-1330 Luxembourg

- At a glance
- The property
- Floor plans
- A first impression
- Contact partner

Property ID: LU881900104\_4 - L-1330 Luxembourg

## At a glance

Property ID	LU881900104_4
Available from	According to the arrangement
Floor	2
Year of construction	1973

Purchase Price	15% of the annual rent paid by the owner
Commission	15% of the annual rent paid by the owner
Total Space	ca. 296 m <sup>2</sup>
Usable Space	ca. 0 m <sup>2</sup>

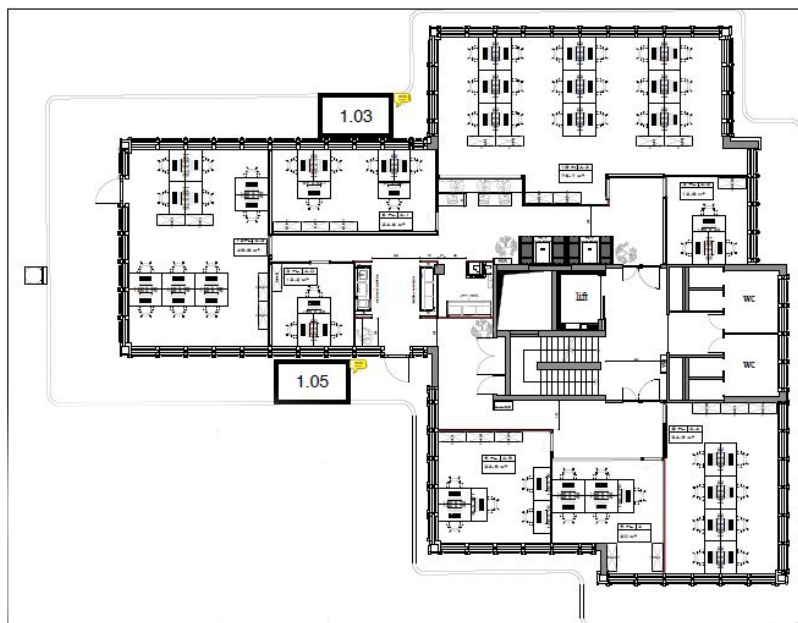
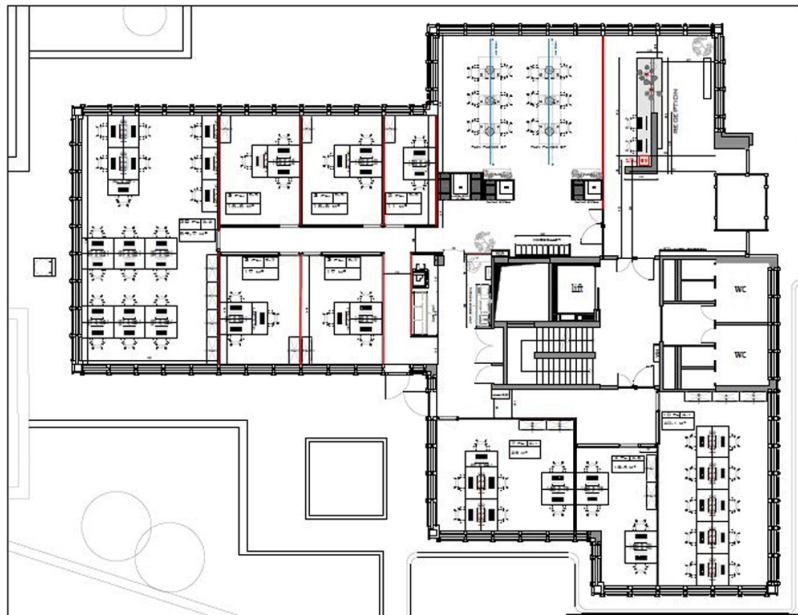
Property ID: LU881900104\_4 - L-1330 Luxembourg

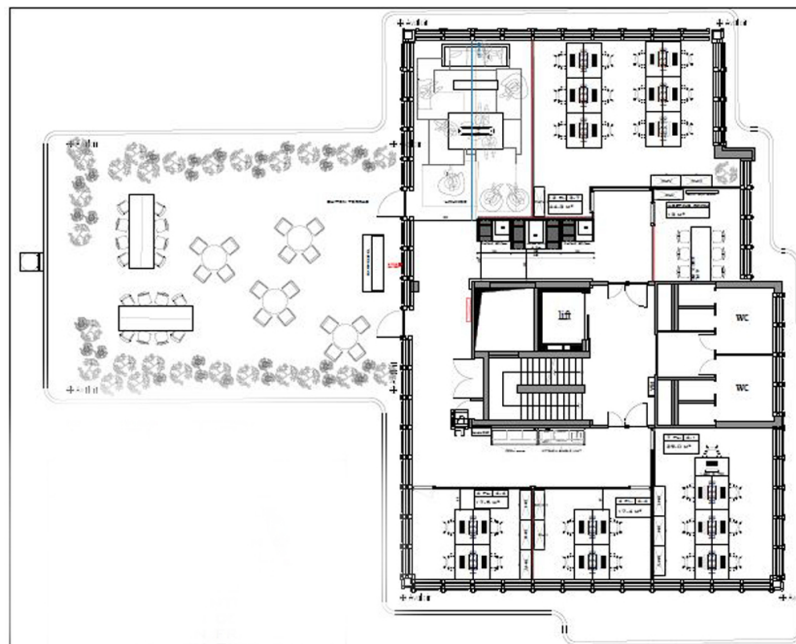
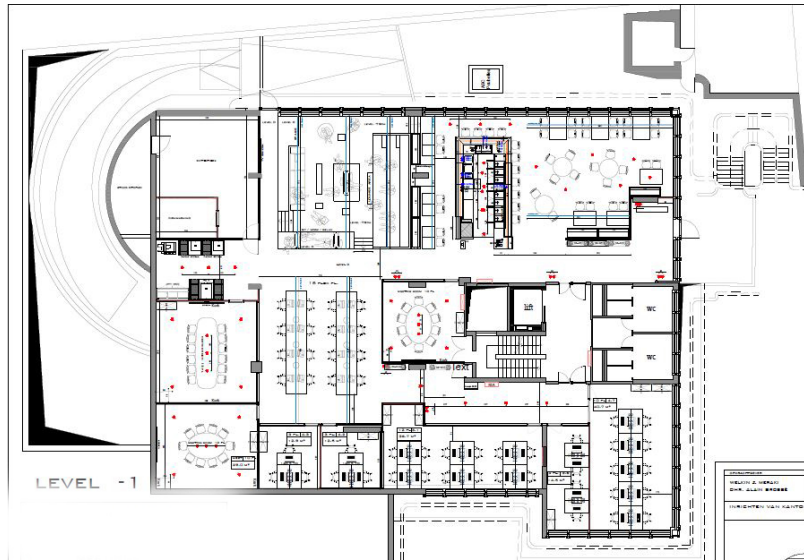
## The property

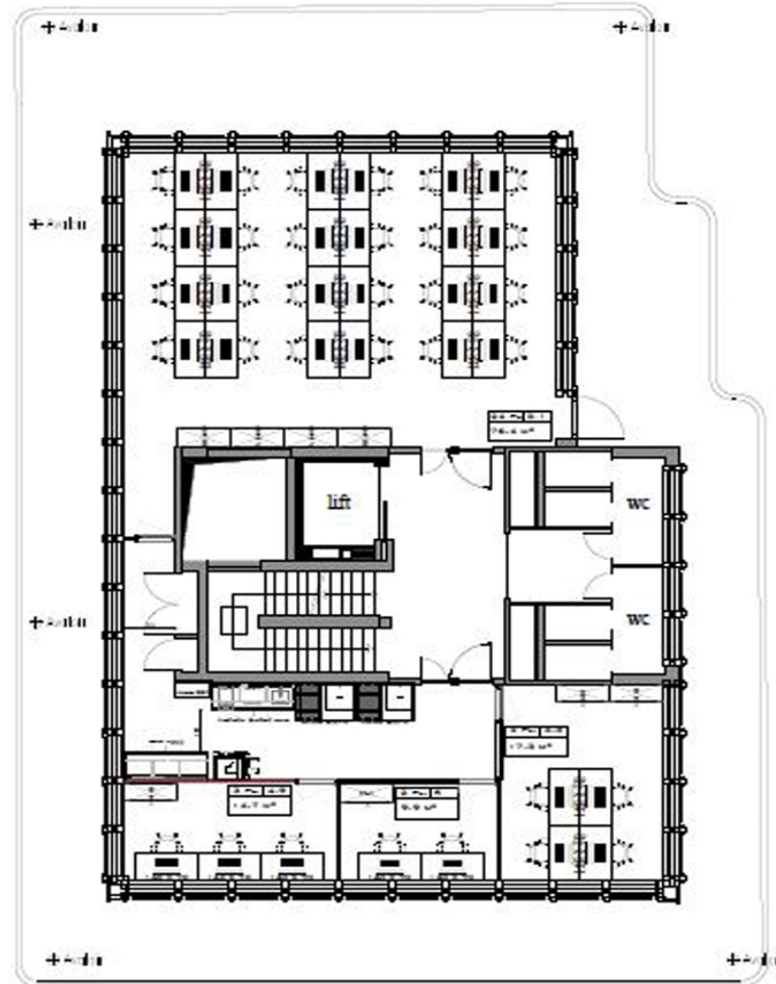


Property ID: LU881900104\_4 - L-1330 Luxembourg

## Floor plans







This floor plan is not to scale. The documents were given to us by the client. For this reason, we cannot guarantee the accuracy of the information.

Property ID: LU881900104\_4 - L-1330 Luxembourg

## A first impression

We offer flexible private offices as well as meeting rooms.



Property ID: LU881900104\_4 - L-1330 Luxembourg

## Contact partner

For further information, please contact your contact person:

VON POLL REAL ESTATE Limpertsberg

---

6, avenue Pasteur Limpertsberg  
E-Mail: [limpertsberg@von-poll.com](mailto:limpertsberg@von-poll.com)

*To Disclaimer of von Poll Immobilien GmbH*

---

[www.von-poll.com](http://www.von-poll.com)