

Luxembourg

# Office for rent

*Property ID: LU881900104\_2*



**RENT PRICE: 0 EUR**

**Property ID: LU881900104\_2 - L-1330 Luxembourg**

- At a glance
- The property
- Floor plans
- A first impression
- Contact partner

Property ID: LU881900104\_2 - L-1330 Luxembourg

## At a glance

Property ID	LU881900104_2	Rent price	On request
Year of construction	1973	Commission	15% of the annual rent paid by the owner
		Total Space	ca. 481 m <sup>2</sup>

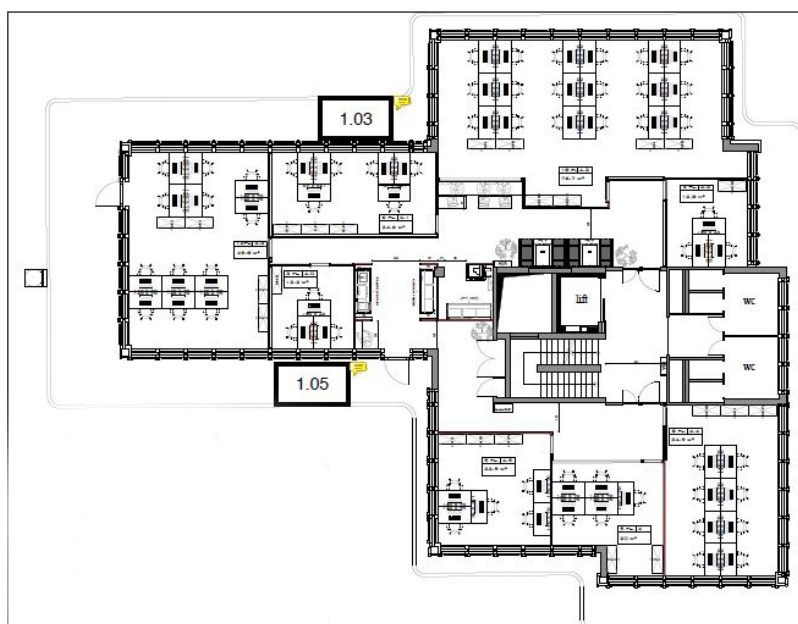
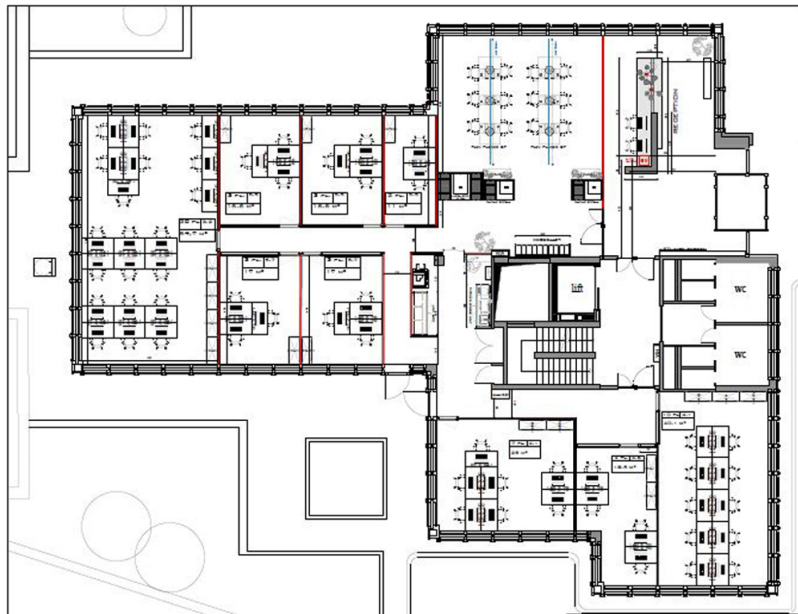
Property ID: LU881900104\_2 - L-1330 Luxembourg

## The property



Property ID: LU881900104\_2 - L-1330 Luxembourg

## Floor plans







This floor plan is not to scale. The documents were given to us by the client. For this reason, we cannot guarantee the accuracy of the information.

**Property ID: LU881900104\_2 - L-1330 Luxembourg**

## A first impression

We offer flexible private offices as well as meeting rooms.

**Property ID: LU881900104\_2 - L-1330 Luxembourg**

## Contact partner

For further information, please contact your contact person:

VON POLL REAL ESTATE Limpertsberg

---

6, avenue Pasteur, L-2310 Luxembourg

Tel.: +352 26 47 98

E-Mail: [limpertsberg@von-poll.com](mailto:limpertsberg@von-poll.com)

*To the Disclaimer of von Poll Immobilien GmbH*

---

[www.von-poll.com](http://www.von-poll.com)