

Luxembourg-gare - Gare
office for rent

Property ID: LU881900103



RENT PRICE: 0 EUR

Property ID: LU881900103 - L-1611 Luxembourg-gare - Gare

- [At a glance](#)
- [The property](#)
- [Energy Data](#)
- [Floor plans](#)
- [Contact partner](#)

Property ID: LU881900103 - L-1611 Luxembourg-gare - Gare

At a glance

Property ID	LU881900103	Rent price	On request
Available from	23.01.2020	Commission	15% loyer annuel eco payé par le propriétaire
Floor	4	Total Space	ca. 434 m ²
Type of parking	2 x Underground car park, 280 EUR (Rent)		

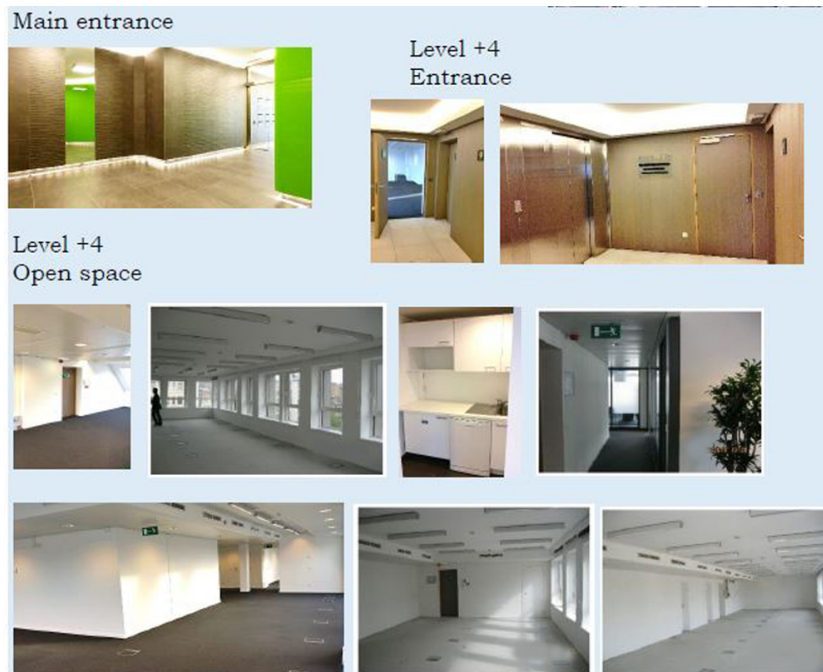
Property ID: LU881900103 - L-1611 Luxembourg-gare - Gare

Energy Data

Type of heating	District heating
Energy information	At the time of preparing the document, no energy certificate was available.

Property ID: LU881900103 - L-1611 Luxembourg-gare - Gare

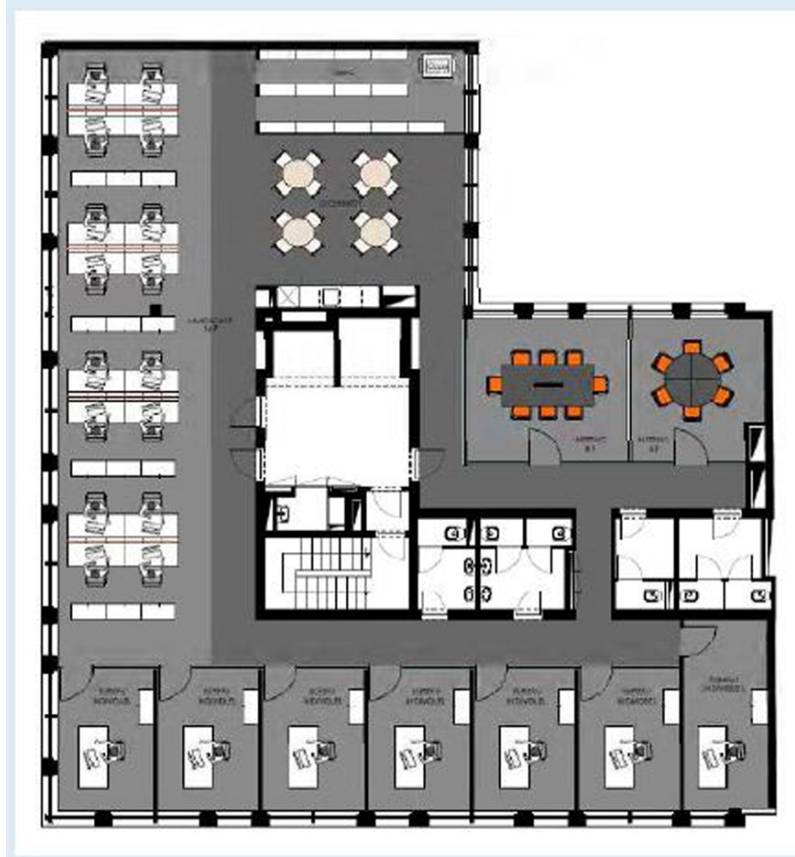
The property

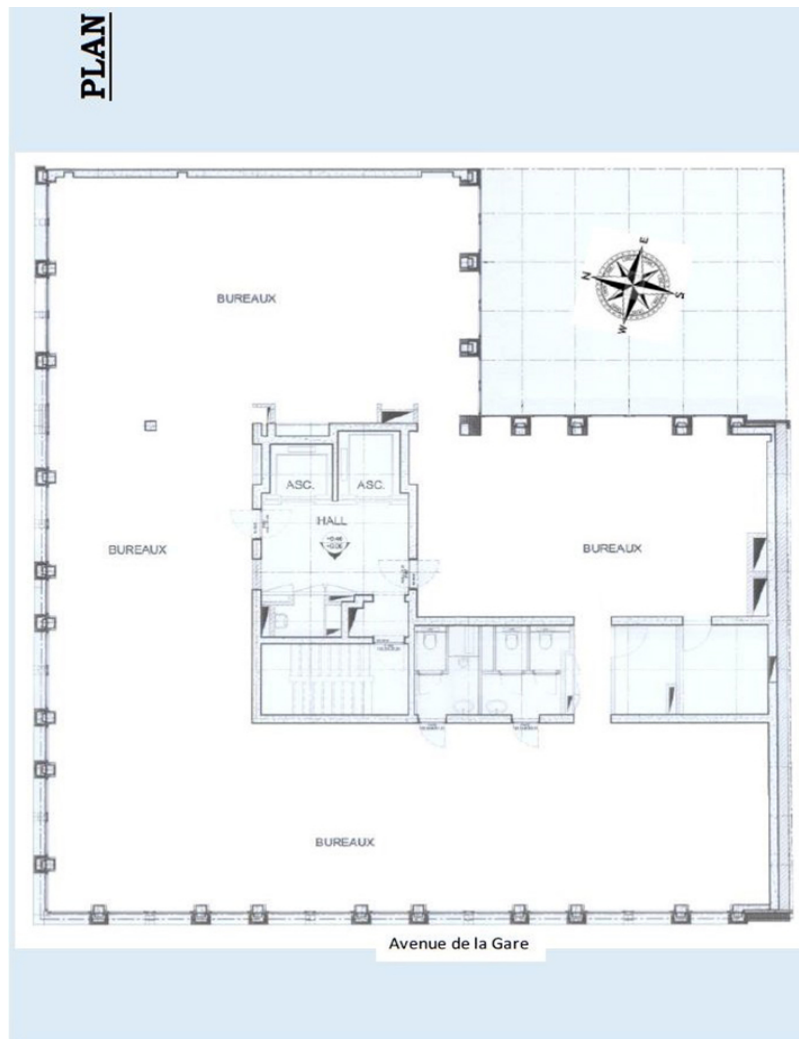


Property ID: LU881900103 - L-1611 Luxembourg-gare - Gare

Floor plans

Sample of fitting-out





This floor plan is not to scale. The documents were given to us by the client. For this reason, we cannot guarantee the accuracy of the information.

Property ID: LU881900103 - L-1611 Luxembourg-gare - Gare

Contact partner

For further information, please contact your contact person:

VON POLL REAL ESTATE Limpertsberg

6, avenue Pasteur, L-2310 Luxembourg

Tel.: +352 26 47 98

E-Mail: limpertsberg@von-poll.com

To the Disclaimer of von Poll Immobilien GmbH

www.von-poll.com