

Differdange

# Master house for rent

Property ID: LU251953734



RENT PRICE: 3.100 EUR • LIVING SPACE: ca. 260 m<sup>2</sup> • LAND AREA: 540 m<sup>2</sup>

Property ID: LU251953734 - L-4575 Differdange

- At a glance
- The property
- Energy Data
- A first impression
- Other information
- Contact partner

Property ID: LU251953734 - L-4575 Differdange

## At a glance

Property ID	LU251953734
Living Space	ca. 260 m²
Bedrooms	5
Bathrooms	2
Type of parking	4 x Outdoor parking space

Rent price	3.100 EUR
Construction method	Solid
Equipment	Built-in kitchen

Property ID: LU251953734 - L-4575 Differdange

## Energy Data

Power Source	Gas
Energy information	At the time of preparing the document, no energy certificate was available.

Property ID: LU251953734 - L-4575 Differdange

## The property





Property ID: LU251953734 - L-4575 Differdange

## The property



Property ID: LU251953734 - L-4575 Differdange

## The property





Property ID: LU251953734 - L-4575 Differdange

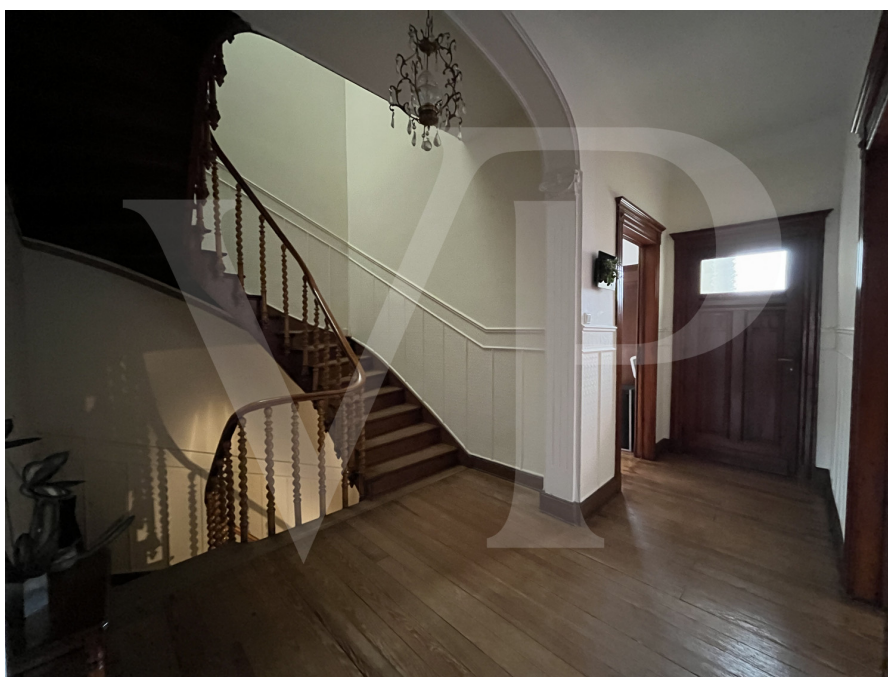
## The property





Property ID: LU251953734 - L-4575 Differdange

## The property



Property ID: LU251953734 - L-4575 Differdange

## The property





Property ID: LU251953734 - L-4575 Differdange

## A first impression

Von Poll Real Estate Luxembourg offers you this house with garden located in the center of Differdange for rent.

Recently renovated with great care, this house has preserved its original charm. It is located in the heart of Differdange, just 50 meters from the Place du Marché and the pedestrian zone, and less than 5 minutes' walk from shops, schools and the train station. The town hall, international school, sports center and Opkorn shopping center are just 10 minutes away. This home offers a real immersion in the dynamic center of Differdange, Luxembourg's third largest city, in the midst of a modernization phase.

Composition :

Ground floor :

- Spacious reception hall
- Independent, fully-equipped kitchen with access to terrace and garden
- Large living room
- Large dining room
- Spacious study
- Separate WC
- Videophone

1st floor:

- Spacious night hall
- 3 large bedrooms
- Bathroom with bathtub and walk-in shower
- Separate WC

2nd floor:

- Night hall with skylight
- 2 bedrooms
- Bathroom with shower and WC
- Access to attic

The floor area of the ground, 1st and 2nd floors is 260 m2. New double-glazed windows and high insulation value.

Basement:



- Large cellars with ground-level access to the garden
- Gas-fired heating with recent condensing boiler
- Utility room
- Technical and storage rooms, including wine cellar

Exterior:

- 3 different terraces

Translated with DeepL.com (free version)

Property ID: LU251953734 - L-4575 Differdange

## Other information

In accordance with the law on rental leases of 10/7/2024 which came into force on 1/8/2024, the real estate agency commission fees of one month's rent + VAT (17%) will be shared equally (50/50) between the lessor and the tenant, each receiving their invoice. It is due on the date of the signing of the lease.

All indications are based exclusively on the information made available to us by our customers. We do not assume any guarantee as to the completeness, accuracy and timeliness of these indications.

Property ID: LU251953734 - L-4575 Differdange

## Contact partner

For further information, please contact your contact person:

VON POLL REAL ESTATE Limpertsberg

---

6, avenue Pasteur, L-2310 Luxembourg

Tel.: +352 26 47 98

E-Mail: [limpertsberg@von-poll.com](mailto:limpertsberg@von-poll.com)

*To the Disclaimer of von Poll Immobilien GmbH*

---

[www.von-poll.com](http://www.von-poll.com)