

Luxembourg-Centre

# Luxurious 2 bedroom apartment for sale in downtown

Property ID: LU241953677



PURCHASE PRICE: 4.200.000 EUR • LIVING SPACE: ca. 190 m<sup>2</sup>

Property ID: LU241953677 - L-2536 Luxembourg-Centre

- At a glance
- The property
- Energy Data
- A first impression
- Other information
- Contact partner

Property ID: LU241953677 - L-2536 Luxembourg-Centre

## At a glance

Property ID	LU241953677
Living Space	ca. 190 m²
Floor	2
Bedrooms	2
Bathrooms	2
Year of construction	1200

Purchase Price	4.200.000 EUR
Condition of property	Like new
Equipment	Guest WC, Built-in kitchen

Property ID: LU241953677 - L-2536 Luxembourg-Centre

## Energy Data

Type of heating	District heating
Power Source	District heating
Energy information	At the time of preparing the document, no energy certificate was available.

Property ID: LU241953677 - L-2536 Luxembourg-Centre

## The property



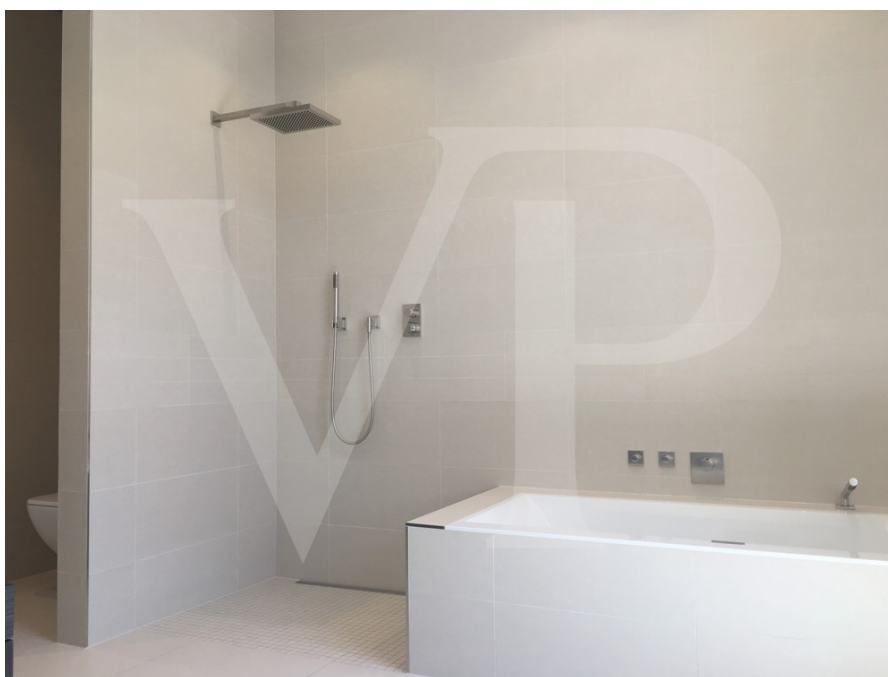
Property ID: LU241953677 - L-2536 Luxembourg-Centre

## The property



Property ID: LU241953677 - L-2536 Luxembourg-Centre

## The property





Property ID: LU241953677 - L-2536 Luxembourg-Centre

## The property





Property ID: LU241953677 - L-2536 Luxembourg-Centre

## A first impression

Von Poll offers you for sale a luxurious 2-bedroom apartment in the historic center of Luxembourg.

The listed entrance welcomes you in a calm and renovated environment.

The apartment consists of an entrance with cupboards and a separate toilet.

A large lounge/living room extends the entrance to the property.

The kitchen and storage area offer a very pleasant space for cooking.

A night hall opens onto the two bedrooms and the bathrooms.

Ideal location for exploring Luxembourg on foot.

Property ID: LU241953677 - L-2536 Luxembourg-Centre

## Other information

All indications in the present document are based exclusively on the information made available to us by our customers. We do not assume any guarantee as to the completeness, accuracy and timeliness of these indications.

The notary fees and registration fees in the land register are borne by the buyer.

The sales commission is the responsibility of the seller, who has signed the sales mandate with our agency.

Property ID: LU241953677 - L-2536 Luxembourg-Centre

## Contact partner

For further information, please contact your contact person:

VON POLL REAL ESTATE Limpertsberg

---

6, avenue Pasteur, L-2310 Luxembourg

Tel.: +352 26 47 98

E-Mail: [limpertsberg@von-poll.com](mailto:limpertsberg@von-poll.com)

*To the Disclaimer of von Poll Immobilien GmbH*

---

[www.von-poll.com](http://www.von-poll.com)