

Luxembourg-Muhlenbach

1 bedroom apartment for sale in Mühlenbach

Property ID: LU221953521



PURCHASE PRICE: 495.000 EUR

Property ID: LU221953521 - L-1482 Luxembourg-Muhlenbach

- At a glance
- The property
- A first impression
- Other information
- Contact partner

Property ID: LU221953521 - L-1482 Luxembourg-Muhlenbach

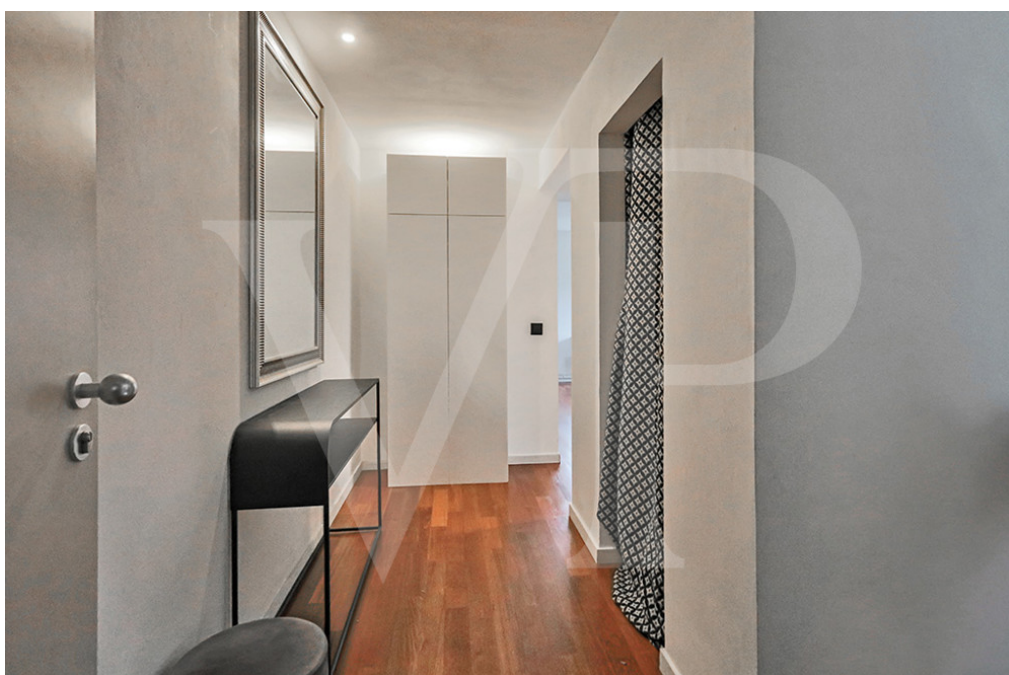
At a glance

Property ID	LU221953521
Floor	2
Bedrooms	1
Bathrooms	1
Year of construction	2002
Type of parking	1 x Underground car park

Purchase Price	495.000 EUR
Condition of property	Like new
Usable Space	ca. 55 m ²

Property ID: LU221953521 - L-1482 Luxembourg-Muhlenbach

The property



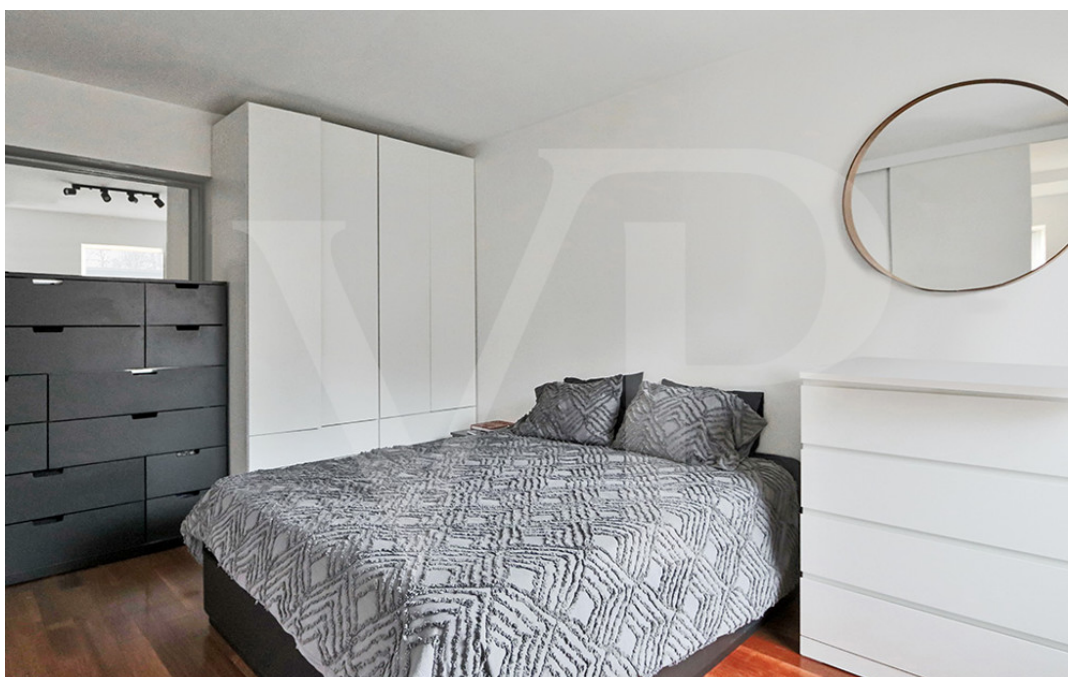
Property ID: LU221953521 - L-1482 Luxembourg-Muhlenbach

The property



Property ID: LU221953521 - L-1482 Luxembourg-Muhlenbach

The property



Property ID: LU221953521 - L-1482 Luxembourg-Muhlenbach

A first impression

Von Poll offers you a 1 bedroom apartment in Mühlenbach for sale. This property has been completely renovated and well equipped.

This apartment has an entrance hall with a storage room, an equipped kitchen, a living room/office, a bedroom and a bathroom that complete this property.

In the basement, a parking space, a cellar compartment and a bicycle room are included in the sale of the apartment.

Close to the center, transport and shops.

The sale is made under the emphyteutic lease.

Property ID: LU221953521 - L-1482 Luxembourg-Muhlenbach

Other information

All indications in the present document are based exclusively on the information made available to us by our customers. We do not assume any guarantee as to the completeness, accuracy and timeliness of these indications.

The notary fees and registration fees/stamp duties at the land register, and any VAT are borne by the buyer.

The sales commission is the responsibility of the seller, who has signed the sales mandate with our agency.

Property ID: LU221953521 - L-1482 Luxembourg-Muhlenbach

Contact partner

For further information, please contact your contact person:

VON POLL REAL ESTATE Limpertsberg

6, avenue Pasteur, L-2310 Luxembourg

Tel.: +352 26 47 98

E-Mail: limpertsberg@von-poll.com

To the Disclaimer of von Poll Immobilien GmbH

www.von-poll.com