

Luxembourg-Muhlenbach

# 1 bedroom apartment for sale in Mühlenbach

Property ID: LU221953521



**PURCHASE PRICE: 495.000 EUR**

**Property ID: LU221953521 - L-1482 Luxembourg-Muhlenbach**

- **At a glance**
- **The property**
- **A first impression**
- **Other information**
- **Contact partner**

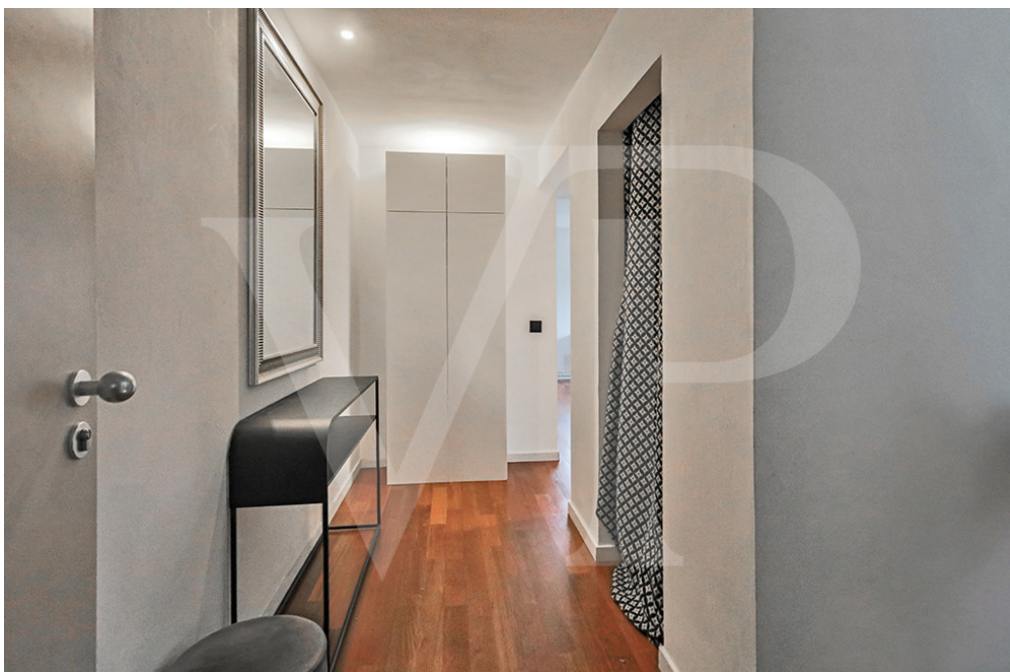
**Property ID: LU221953521 - L-1482 Luxembourg-Muhlenbach**

## At a glance

<b>Property ID</b>	<b>LU221953521</b>	<b>Purchase Price</b>	<b>495.000 EUR</b>
<b>Floor</b>	<b>2</b>	<b>Type</b>	<b>Apartment</b>
<b>Bedrooms</b>	<b>1</b>	<b>Condition of property</b>	<b>Like new</b>
<b>Bathrooms</b>	<b>1</b>	<b>Usable Space</b>	<b>ca. 55 m<sup>2</sup></b>
<b>Year of construction</b>	<b>2002</b>		
<b>Type of parking</b>	<b>1 x Underground car park</b>		

Property ID: LU221953521 - L-1482 Luxembourg-Muhlenbach

## The property



Property ID: LU221953521 - L-1482 Luxembourg-Muhlenbach

## The property



Property ID: LU221953521 - L-1482 Luxembourg-Muhlenbach

## The property



**Property ID: LU221953521 - L-1482 Luxembourg-Muhlenbach**

## **A first impression**

**Von Poll offers you a 1 bedroom apartment in Mühlenbach for sale. This property has been completely renovated and well equipped.**

**This apartment has an entrance hall with a storage room, an equipped kitchen, a living room/office, a bedroom and a bathroom that complete this property.**

**In the basement, a parking space, a cellar compartment and a bicycle room are included in the sale of the apartment.**

**Close to the center, transport and shops.**

**The sale is made under the emphyteutic lease.**

**Property ID: LU221953521 - L-1482 Luxembourg-Muhlenbach**

## **Other information**

**All indications in the present document are based exclusively on the information made available to us by our customers. We do not assume any guarantee as to the completeness, accuracy and timeliness of these indications.**

**The notary fees and registration fees/stamp duties at the land register, and any VAT are borne by the buyer.**

**The sales commission is the responsibility of the seller, who has signed the sales mandate with our agency.**

**Property ID: LU221953521 - L-1482 Luxembourg-Muhlenbach**

## Contact partner

**For further information, please contact your contact person:**

**VON POLL REAL ESTATE Limpertsberg**

---

**6, avenue Pasteur, L-2310 Luxembourg**

**Tel.: +352 26 47 98**

**E-Mail: [limpertsberg@von-poll.com](mailto:limpertsberg@von-poll.com)**

*To the Disclaimer of von Poll Immobilien GmbH*

---

**[www.von-poll.com](http://www.von-poll.com)**