

Luxembourg-Gasperich - Cessage gasperich Howald

# Office for rent

*Property ID: 7\_3*



**RENT PRICE: 0 EUR**

**Property ID: 7\_3 - L-1882 Luxembourg-Gasperich - Cessage gasperich Howald**

- At a glance
- The property
- Energy Data
- Contact partner

Property ID: 7\_3 - L-1882 Luxembourg-Gasperich - Cessage gasperich Howald

## At a glance

Property ID	7_3	Rent price	On request
Available from	30.01.2020	Commission	Honoraires à la charge du propriétaire
		Total Space	ca. 400 m <sup>2</sup>

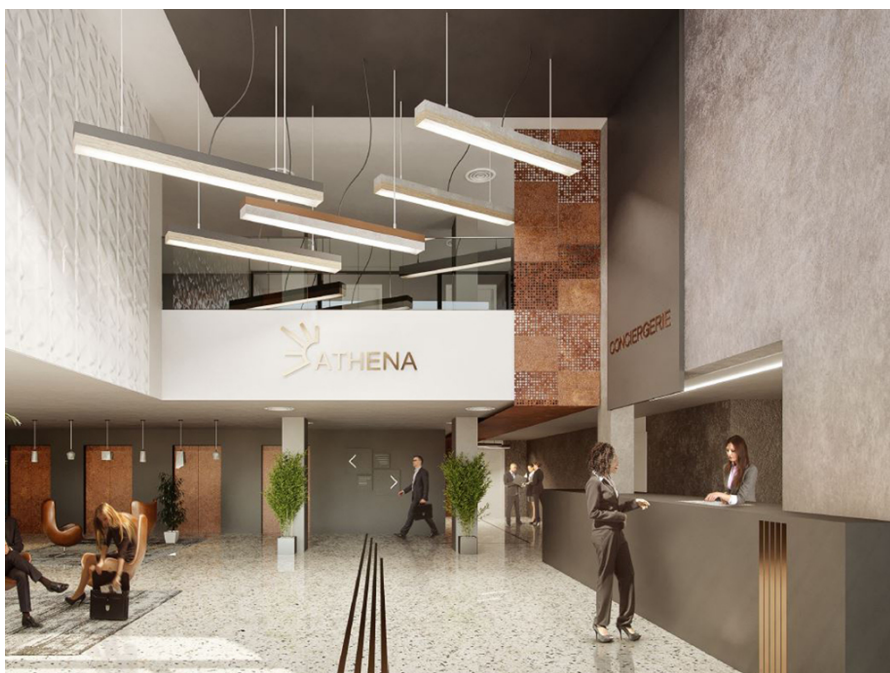
Property ID: 7\_3 - L-1882 Luxembourg-Gasperich - Cessage gasperich Howald

## Energy Data

Type of heating	Central heating
Power Source	District heating
Energy information	At the time of preparing the document, no energy certificate was available.

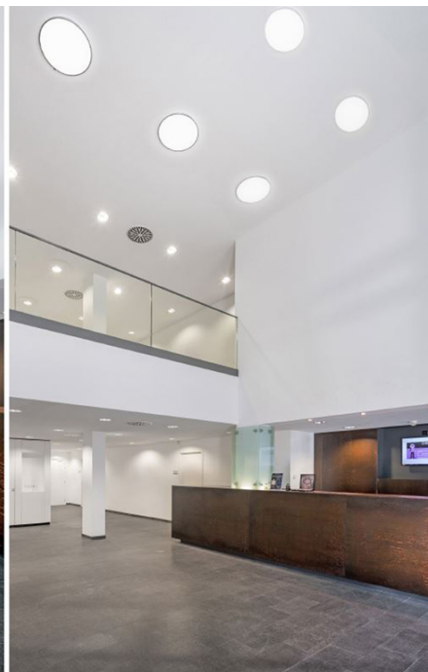
Property ID: 7\_3 - L-1882 Luxembourg-Gasperich - Cessage gasperich Howald

## The property



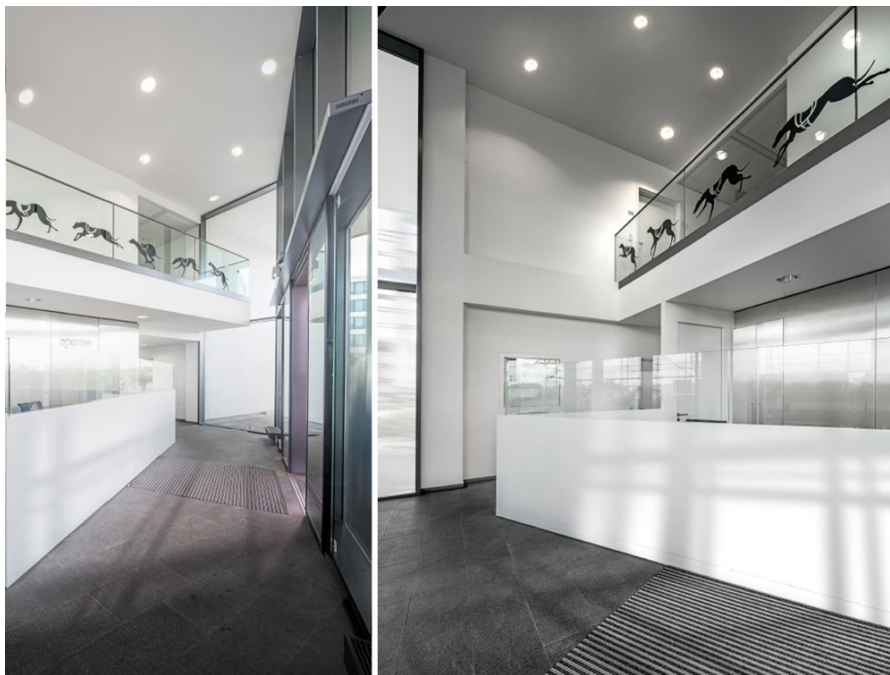
Property ID: 7\_3 - L-1882 Luxembourg-Gasperich - Cessage gasperich Howald

## The property



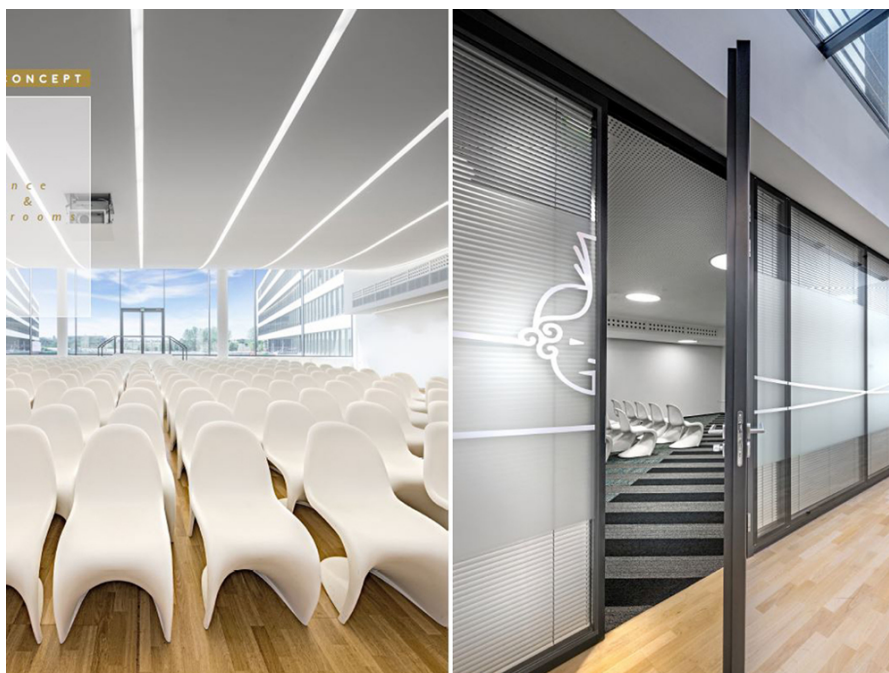
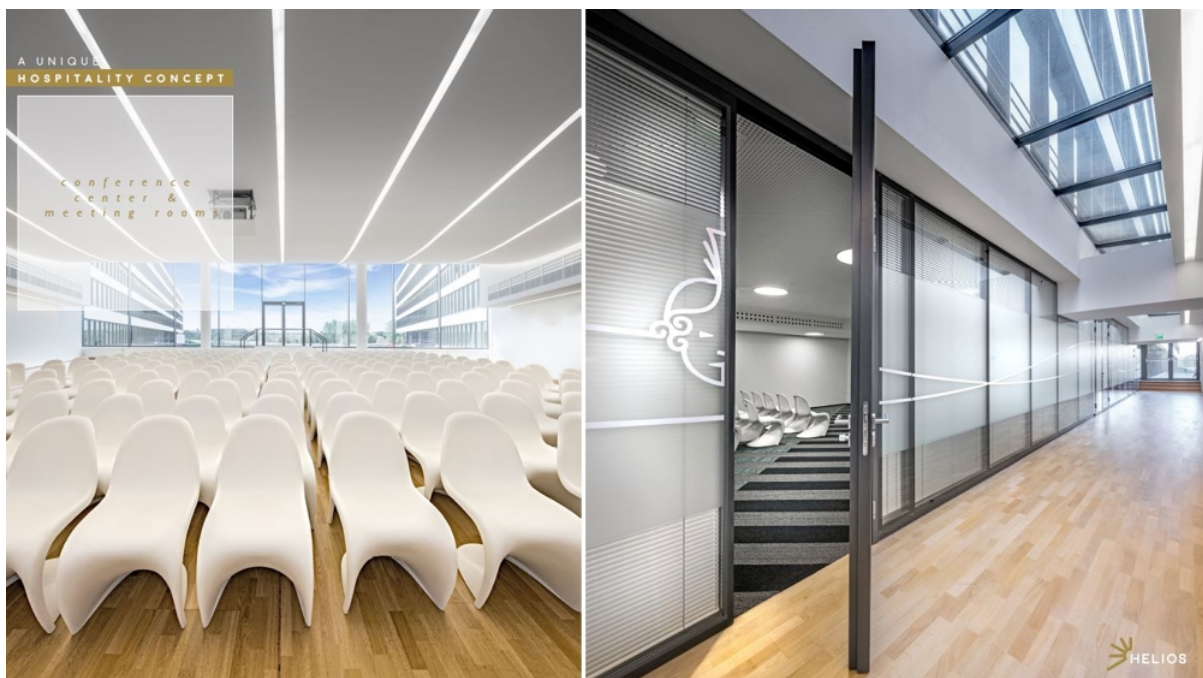
Property ID: 7\_3 - L-1882 Luxembourg-Gasperich - Cessage gasperich Howald

## The property



Property ID: 7\_3 - L-1882 Luxembourg-Gasperich - Cessage gasperich Howald

## The property



Property ID: 7\_3 - L-1882 Luxembourg-Gasperich - Cessage gasperich Howald

## The property



Property ID: 7\_3 - L-1882 Luxembourg-Gasperich - Cessage gasperich Howald

## Contact partner

For further information, please contact your contact person:

VON POLL REAL ESTATE Limpertsberg

---

6, avenue Pasteur, L-2310 Luxembourg

Tel.: +352 26 47 98

E-Mail: [limpertsberg@von-poll.com](mailto:limpertsberg@von-poll.com)

*To the Disclaimer of von Poll Immobilien GmbH*

---

[www.von-poll.com](http://www.von-poll.com)