

Luxembourg-Gasperich - Cessage gasperich Howald

Office for rent

Property ID: 7_3



RENT PRICE: 0 EUR

Property ID: 7_3 - L-1882 Luxembourg-Gasperich - Cessage gasperich Howald

- **At a glance**
- **The property**
- **Energy Data**
- **Contact partner**

Property ID: 7_3 - L-1882 Luxembourg-Gasperich - Cessage gasperich Howald

At a glance

Property ID	7_3	Rent price	On request
Available from	30.01.2020	Office/Professional practice	Office centre
		Commission	Honoraires à la charge du propriétaire
		Total Space	ca. 400 m²
		Office space	ca. 400 m²

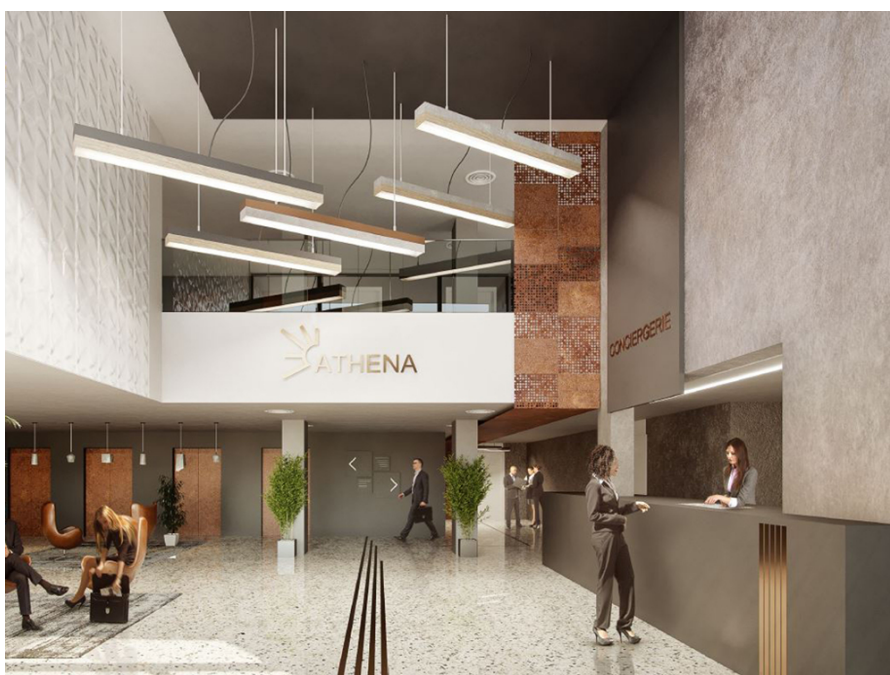
Property ID: 7_3 - L-1882 Luxembourg-Gasperich - Cessage gasperich Howald

Energy Data

Type of heating	Central heating
Power Source	District heating
Energy information	At the time of preparing the document, no energy certificate was available.

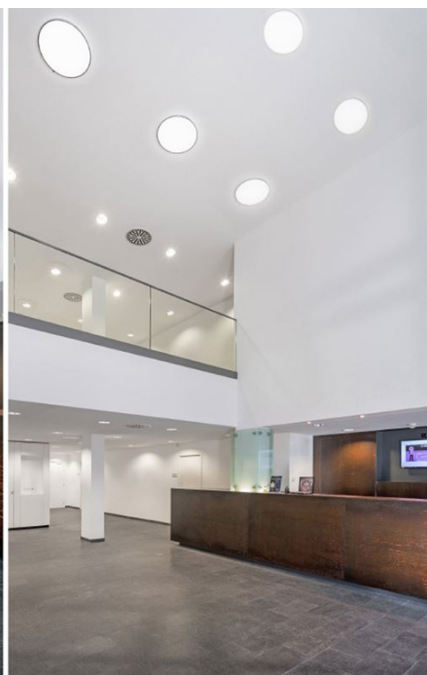
Property ID: 7_3 - L-1882 Luxembourg-Gasperich - Cessage gasperich Howald

The property



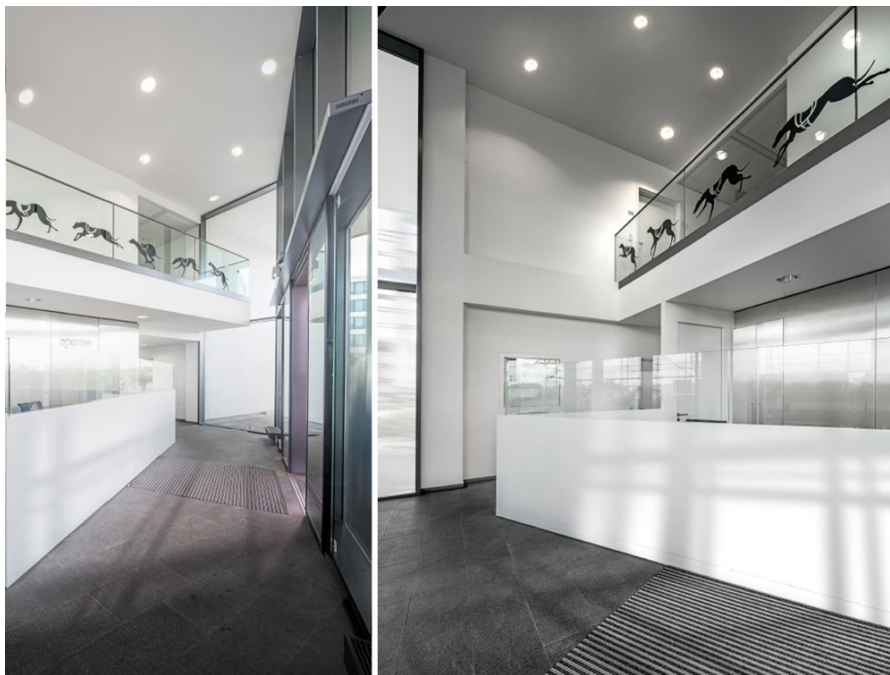
Property ID: 7_3 - L-1882 Luxembourg-Gasperich - Cessage gasperich Howald

The property



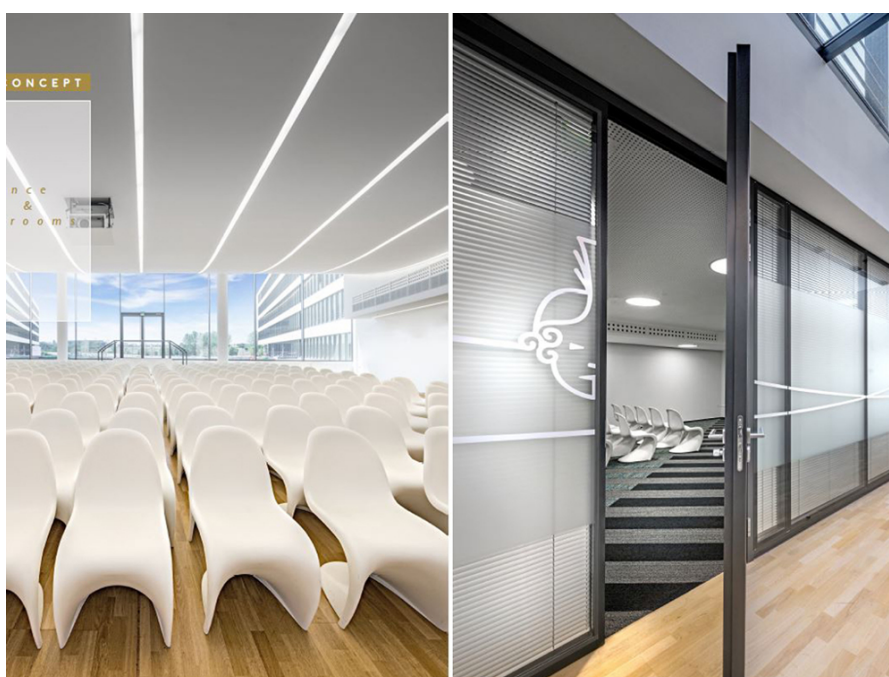
Property ID: 7_3 - L-1882 Luxembourg-Gasperich - Cessage gasperich Howald

The property



Property ID: 7_3 - L-1882 Luxembourg-Gasperich - Cessage gasperich Howald

The property



Property ID: 7_3 - L-1882 Luxembourg-Gasperich - Cessage gasperich Howald

The property



Property ID: 7_3 - L-1882 Luxembourg-Gasperich - Cessage gasperich Howald

Contact partner

For further information, please contact your contact person:

VON POLL REAL ESTATE Limpertsberg

6, avenue Pasteur, L-2310 Luxembourg

Tel.: +352 26 47 98

E-Mail: limpertsberg@von-poll.com

To the Disclaimer of von Poll Immobilien GmbH

www.von-poll.com