

Paleo Psychiko

Aristea

Objektnummer: 2340290



MIETPREIS: 10.000 EUR • WOHNFLÄCHE: ca. 405 m² • ZIMMER: 4 • GRUNDSTÜCK: 2.000 m²

Objektnummer: 2340290 - 135 61 Paleo Psychiko

- **Auf einen Blick**
- **Die Immobilie**
- **Ein erster Eindruck**
- **Ansprechpartner**

Objektnummer: 2340290 - 135 61 Paleo Psychiko

Auf einen Blick

Objektnummer	2340290	Mietpreis	10.000 EUR
Wohnfläche	ca. 405 m²		
Zimmer	4		
Schlafzimmer	3		
Badezimmer	4		
Baujahr	2007		

Objektnummer: 2340290 - 135 61 Paleo Psychiko

Die Immobilie



Objektnummer: 2340290 - 135 61 Paleo Psychiko

Die Immobilie



Objektnummer: 2340290 - 135 61 Paleo Psychiko

Die Immobilie



Objektnummer: 2340290 - 135 61 Paleo Psychiko

Die Immobilie



Objektnummer: 2340290 - 135 61 Paleo Psychiko

Die Immobilie



Objektnummer: 2340290 - 135 61 Paleo Psychiko

Die Immobilie



Objektnummer: 2340290 - 135 61 Paleo Psychiko

Die Immobilie



Objektnummer: 2340290 - 135 61 Paleo Psychiko

Die Immobilie



Objektnummer: 2340290 - 135 61 Paleo Psychiko

Die Immobilie



Objektnummer: 2340290 - 135 61 Paleo Psychiko

Die Immobilie



Objektnummer: 2340290 - 135 61 Paleo Psychiko

Die Immobilie



Objektnummer: 2340290 - 135 61 Paleo Psychiko

Die Immobilie



Objektnummer: 2340290 - 135 61 Paleo Psychiko

Die Immobilie



Objektnummer: 2340290 - 135 61 Paleo Psychiko

Die Immobilie



Objektnummer: 2340290 - 135 61 Paleo Psychiko

Die Immobilie



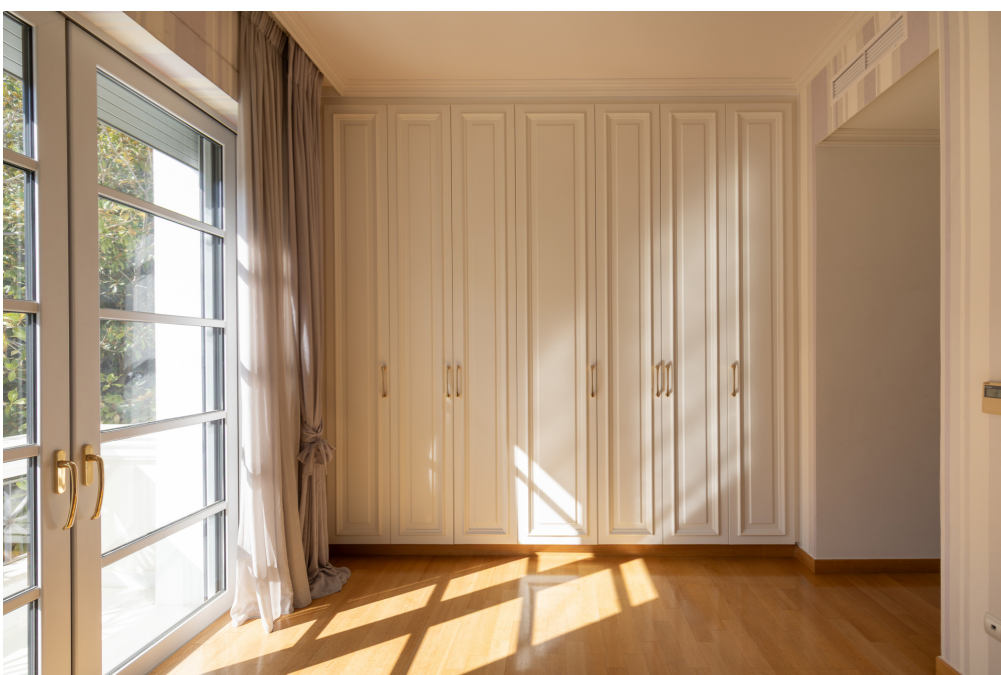
Objektnummer: 2340290 - 135 61 Paleo Psychiko

Die Immobilie



Objektnummer: 2340290 - 135 61 Paleo Psychiko

Die Immobilie



Objektnummer: 2340290 - 135 61 Paleo Psychiko

Die Immobilie



Objektnummer: 2340290 - 135 61 Paleo Psychiko

Die Immobilie



Objektnummer: 2340290 - 135 61 Paleo Psychiko

Die Immobilie



Objektnummer: 2340290 - 135 61 Paleo Psychiko

Die Immobilie



Objektnummer: 2340290 - 135 61 Paleo Psychiko

Ein erster Eindruck

Nestled in the heart of Palaio Psychiko, one of Athens' most distinguished and serene residential areas, the Aristeia maisonette is a residence that exemplifies refined living.

Part of an exclusive complex of only four homes, it combines timeless architectural elegance with a discreet sense of luxury, offering both privacy and sophistication. With a total surface of 405 sq.m., the property unfolds across three main levels and an attic, thoughtfully designed to provide generous, light-filled spaces that cater to modern lifestyles. The beautifully landscaped communal gardens, along with an expansive swimming pool, create a tranquil setting ideal for relaxation and outdoor enjoyment. On the ground floor, the home welcomes you with a spacious and light-filled living room with two fireplaces, an elegant dining area, and a fully equipped kitchen with built-in Miele appliances, as well as a guest WC. The first floor hosts three comfortable master bedrooms, each with its own en-suite bathroom. One of the bedrooms also features a walk-in closet and a fireplace, adding an extra touch of luxury. All rooms have access to balconies with open green views, ensuring absolute privacy and tranquility.

The attic is a bright and atmospheric space that can be configured as a private office, library, or a serene area for relaxation and creativity, offering a sense of seclusion and calm. On the lower level, there is a bright playroom, a guest bedroom with its own bathroom, a laundry area, as well as a staff room with WC. The property is complemented by two storage rooms and three enclosed parking spaces. Additional features include high-quality marble flooring, autonomous heating with natural gas, central air conditioning system, boiler, alarm system, internal elevator, electric shutters, insect screens, and a generator, while common expenses are included in the price.

Offering an exceptional balance of elegance, comfort, and practicality, Aristeia is an outstanding choice for those seeking a prestigious residence in one of Athens' most sought-after neighborhoods. Palaio Psychiko is one of the most prestigious and secure residential areas of Athens, offering close proximity to top private and international schools, a well-organized local market, and high-end services. The property's location ensures quick access to Kifisias Avenue (900 m), connecting effortlessly to major road networks and facilitating easy commuting, while maintaining a quiet and residential character.

Objektnummer: 2340290 - 135 61 Paleo Psychiko

Ansprechpartner

Weitere Informationen erhalten Sie über Ihren Ansprechpartner:

VON POLL REAL ESTATE Athens

Patriarchou Ioakim 19, 10675 Athina

Tel.: +30 21 06 14 87 77

E-Mail: salesgreece@von-poll.com

Zum Impressum der von Poll Immobilien GmbH

www.von-poll.com