

Paleo Psychiko

# Noblea

*Objektnummer: 2330057*



**MIETPREIS: 10.000 EUR • WOHNFLÄCHE: ca. 425 m<sup>2</sup> • ZIMMER: 4 • GRUNDSTÜCK: 2.000 m<sup>2</sup>**

**Objektnummer: 2330057 - 135 61 Paleo Psychiko**

- **Auf einen Blick**
- **Die Immobilie**
- **Ein erster Eindruck**
- **Ansprechpartner**

**Objektnummer: 2330057 - 135 61 Paleo Psychiko**

## **Auf einen Blick**

<b>Objektnummer</b>	<b>2330057</b>	<b>Mietpreis</b>	<b>10.000 EUR</b>
<b>Wohnfläche</b>	<b>ca. 425 m<sup>2</sup></b>		
<b>Zimmer</b>	<b>4</b>		
<b>Schlafzimmer</b>	<b>3</b>		
<b>Badezimmer</b>	<b>4</b>		
<b>Baujahr</b>	<b>2007</b>		

Objektnummer: 2330057 - 135 61 Paleo Psychiko

## Die Immobilie



Objektnummer: 2330057 - 135 61 Paleo Psychiko

## Die Immobilie



Objektnummer: 2330057 - 135 61 Paleo Psychiko

## Die Immobilie



Objektnummer: 2330057 - 135 61 Paleo Psychiko

## Die Immobilie



Objektnummer: 2330057 - 135 61 Paleo Psychiko

## Die Immobilie



Objektnummer: 2330057 - 135 61 Paleo Psychiko

## Die Immobilie



Objektnummer: 2330057 - 135 61 Paleo Psychiko

## Die Immobilie



Objektnummer: 2330057 - 135 61 Paleo Psychiko

## Die Immobilie



Objektnummer: 2330057 - 135 61 Paleo Psychiko

## Die Immobilie



Objektnummer: 2330057 - 135 61 Paleo Psychiko

## Die Immobilie



Objektnummer: 2330057 - 135 61 Paleo Psychiko

## Die Immobilie



Objektnummer: 2330057 - 135 61 Paleo Psychiko

## Die Immobilie



Objektnummer: 2330057 - 135 61 Paleo Psychiko

## Die Immobilie



Objektnummer: 2330057 - 135 61 Paleo Psychiko

## Die Immobilie



Objektnummer: 2330057 - 135 61 Paleo Psychiko

## Die Immobilie



Objektnummer: 2330057 - 135 61 Paleo Psychiko

## Die Immobilie



Objektnummer: 2330057 - 135 61 Paleo Psychiko

## Die Immobilie



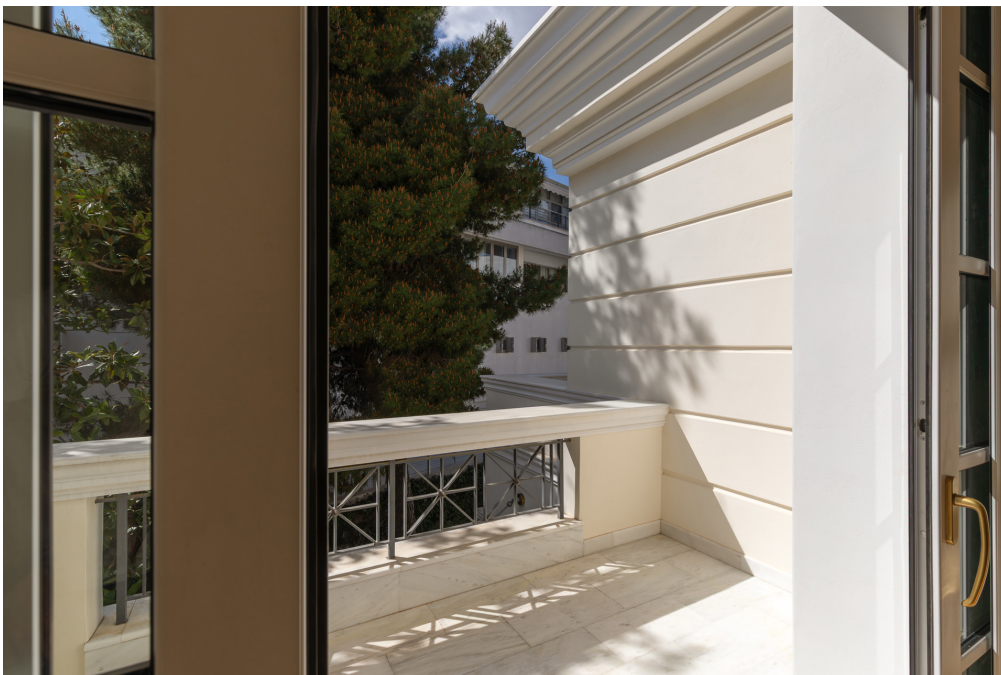
Objektnummer: 2330057 - 135 61 Paleo Psychiko

## Die Immobilie



Objektnummer: 2330057 - 135 61 Paleo Psychiko

## Die Immobilie



Objektnummer: 2330057 - 135 61 Paleo Psychiko

## Die Immobilie



Objektnummer: 2330057 - 135 61 Paleo Psychiko

## Die Immobilie



Objektnummer: 2330057 - 135 61 Paleo Psychiko

## Die Immobilie



**Objektnummer: 2330057 - 135 61 Paleo Psychiko**

## **Ein erster Eindruck**

**In the heart of Palaio Psychiko, in one of the area's most prestigious and tranquil locations, lies the impressive Noblea maisonette. Part of an elegant complex of four residences, it seamlessly combines understated luxury with architectural harmony.**

**The residence extends over a total surface of 425 sq.m., across three levels plus an attic, offering generous spaces designed for modern, high-quality living. The shared outdoor areas, featuring a beautifully landscaped garden and a large swimming pool, create an ideal setting for relaxation with a strong sense of privacy. On the ground floor, the home welcomes you with a spacious and light-filled living room with two fireplaces, an elegant dining area, and a fully equipped kitchen with built-in Miele appliances, as well as a guest WC. The first floor hosts three comfortable master bedrooms, each with its own en-suite bathroom. One of the bedrooms also features a walk-in closet and a fireplace, adding an extra touch of luxury. All rooms have access to balconies with open green views, ensuring absolute privacy and tranquility.**

**The attic is a bright and atmospheric space that can be configured as a private office, library, or a serene area for relaxation and creativity, offering a sense of seclusion and calm. On the lower level, there is a bright playroom, a guest bedroom with its own bathroom, a laundry area, as well as a staff room with WC. The property is complemented by two storage rooms and three enclosed parking spaces.**

**Additional features include high-quality marble flooring, autonomous heating with natural gas, central air conditioning system, boiler, alarm system, internal elevator, electric shutters, insect screens, and a generator, while common expenses are included in the price.**

**Noblea is an exceptional choice for those seeking a luxurious residence in one of Athens' most aristocratic neighborhoods, combining immediate access to key amenities with absolute peace and privacy.**

**Objektnummer: 2330057 - 135 61 Paleo Psychiko**

## **Ansprechpartner**

**Weitere Informationen erhalten Sie über Ihren Ansprechpartner:**

**VON POLL REAL ESTATE Athens**

---

**Patriarchou Ioakim 19, 10675 Athina**

**Tel.: +30 21 06 14 87 77**

**E-Mail: [salesgreece@von-poll.com](mailto:salesgreece@von-poll.com)**

*Zum Impressum der von Poll Immobilien GmbH*

---

**[www.von-poll.com](http://www.von-poll.com)**